



FY 2026

Camden One-Stop NJDOL

Employment Services & Unemployment

**Statistics, Charts & FY 2025 Comparisons*

YTD September 2025



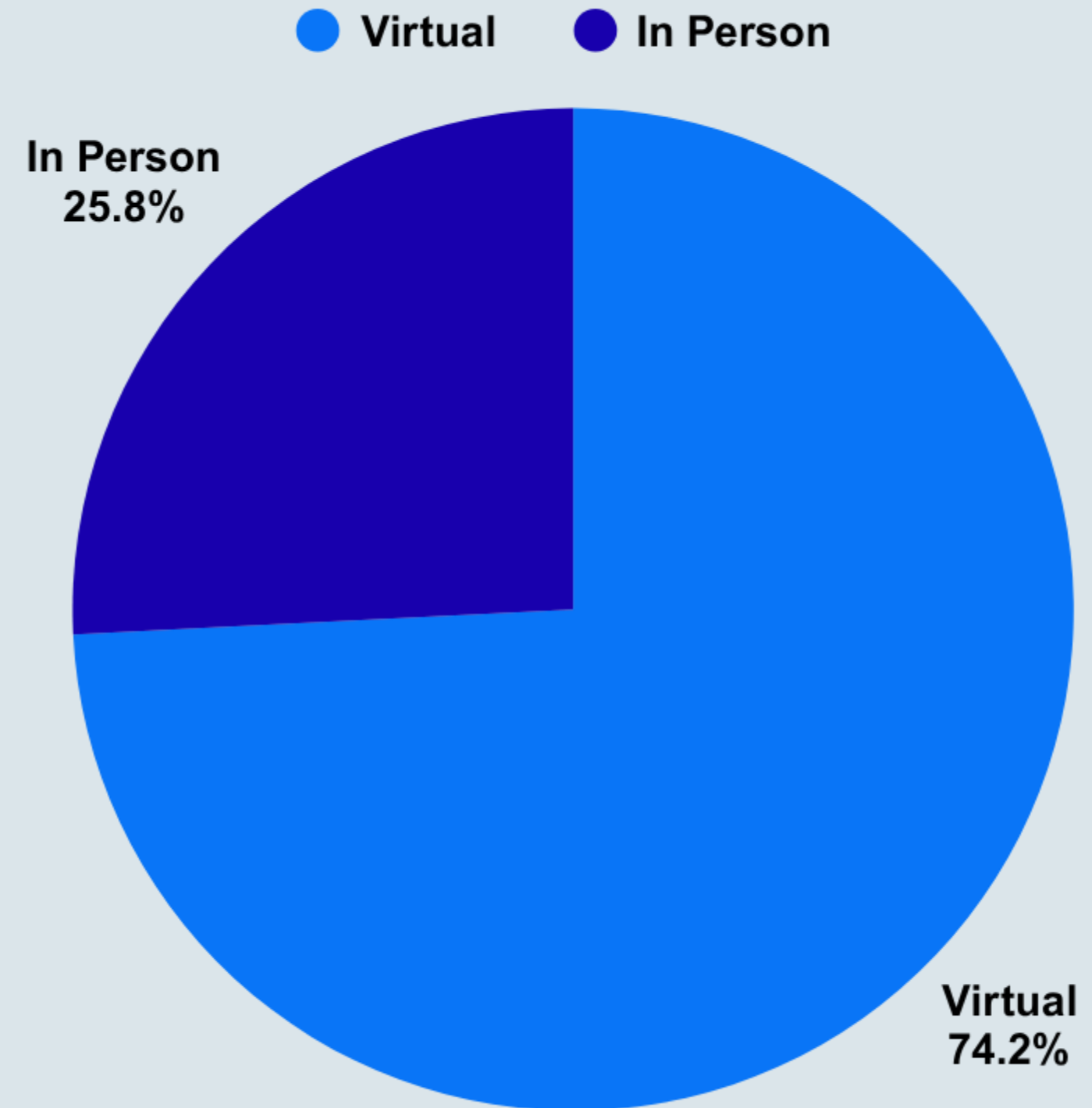
Total Customers
Served - 570

Virtually - 74% / 423

In Person - 26% / 147

Camden County One-Stop NJDOL ES

570 Customers Served - September 2025



Camden County One-Stop NJDOLE Hybrid ES Customers

*September 2025 Compared to
September 2024*

September 2025

- Total Customers - 570
- Virtual - 74% / 423
- In Person - 26% / 147

September 2024

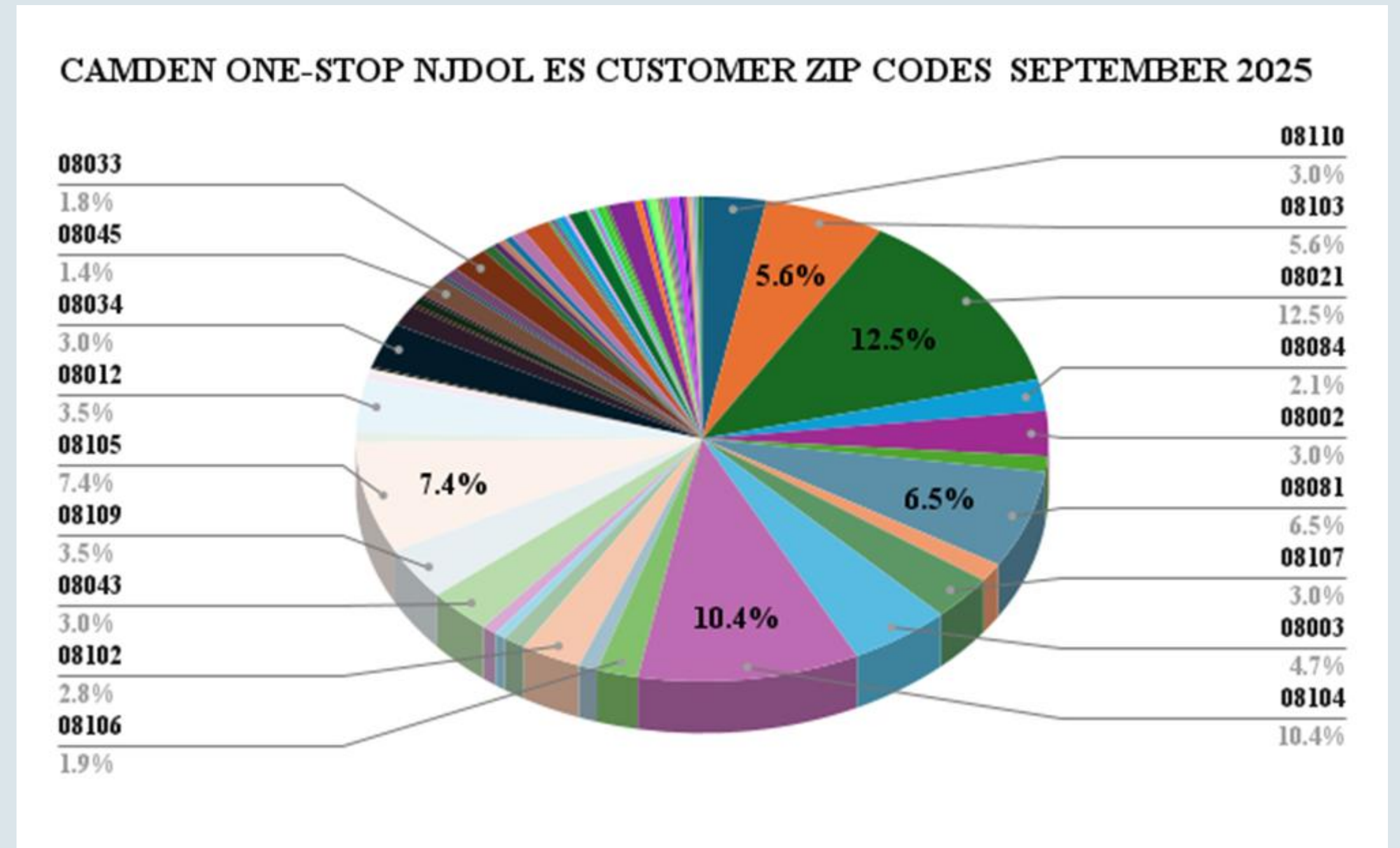
- Total Customers - 662
- Virtual - 81% / 536
- In Person - 19% / 126

Total Customers Served - 570

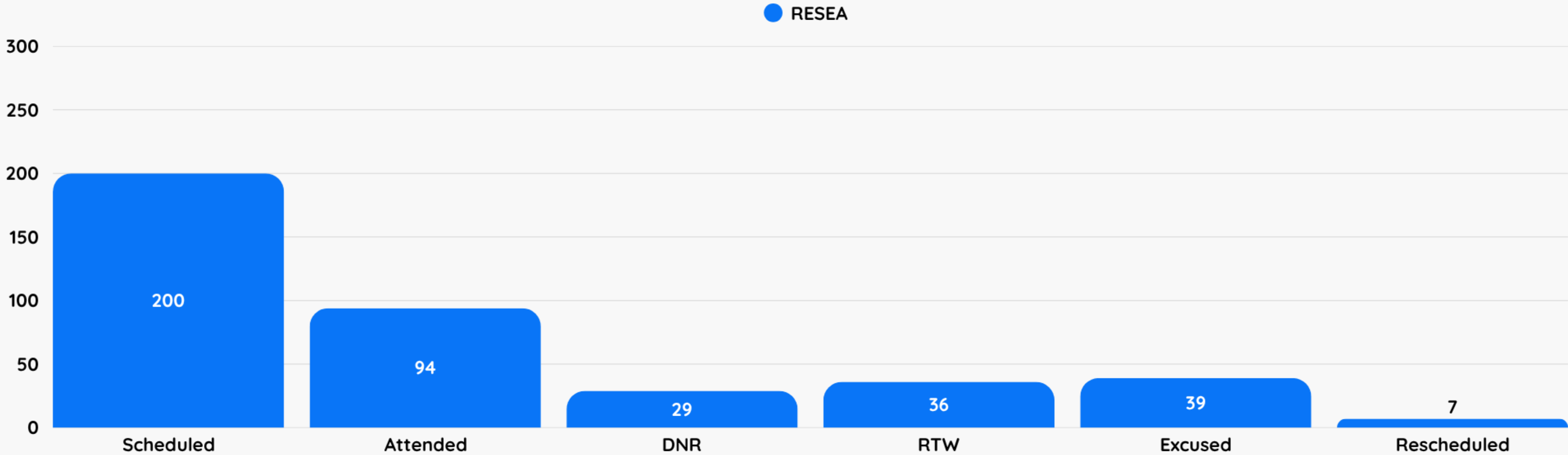
Camden - 26.2% / 149

Sicklerville & Clementon - 19.0% / 108

Camden County One-Stop NJDOL ES Customer Zip Codes - September 2025



RESEA Attendance Rate - 47% - September 2025



FY 2026 NJDOL ES Totals YTD - September

2025



**Avg. Customers
Per Month - 527**



**Customers
Served - 1582**



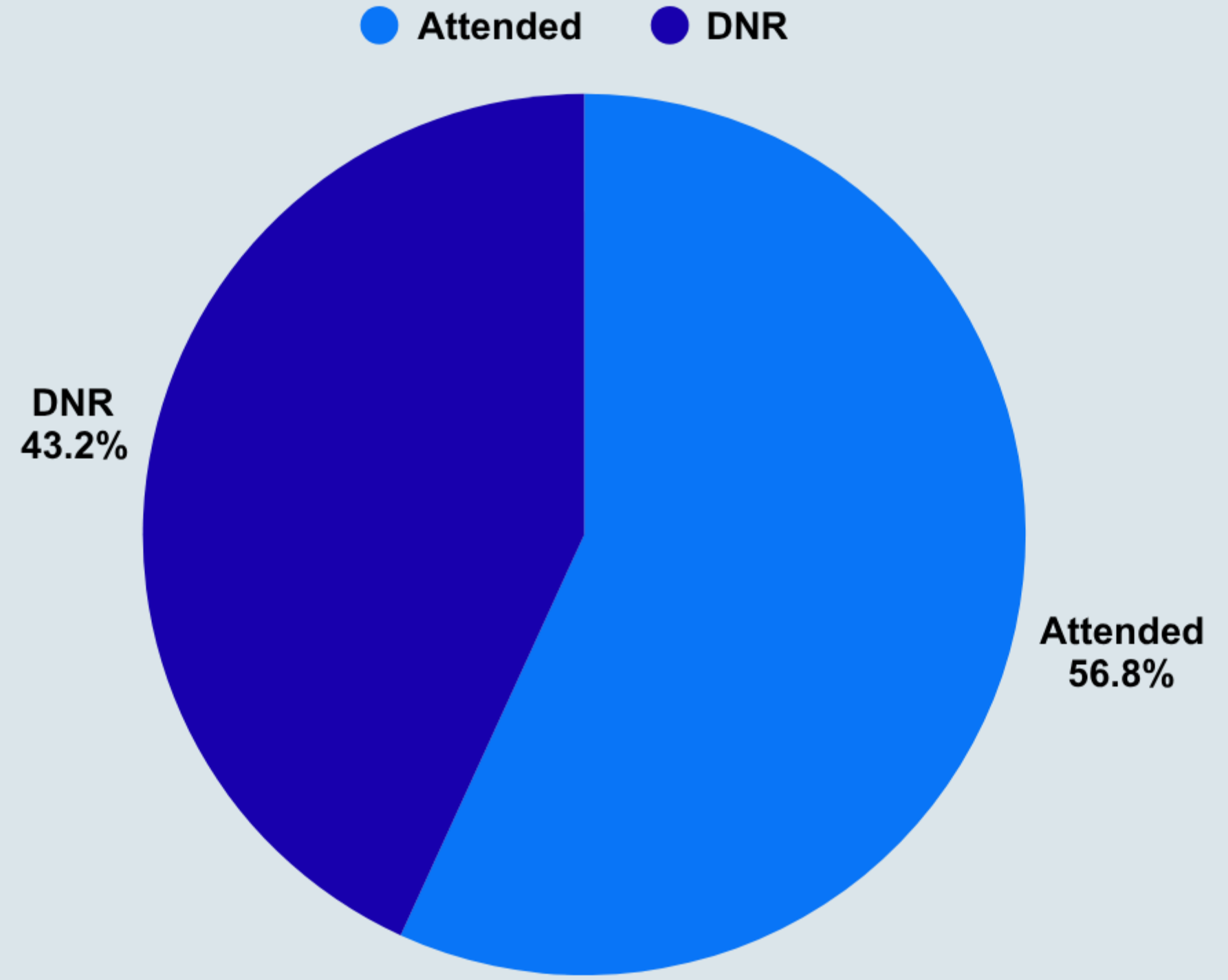
**Avg. Service Method
71% Virtually
29% In-Person**

Total UI Customers
Served - 1911

Attended - 57% / 1086

DNR - 43% / 825

Camden County One-Stop NJDOL UI 1910 Customers Served - September 2025



Camden County One-Stop NJDOL UI Onsite Customers Served

***September 2025 Compared to
September 2024***

September 2025

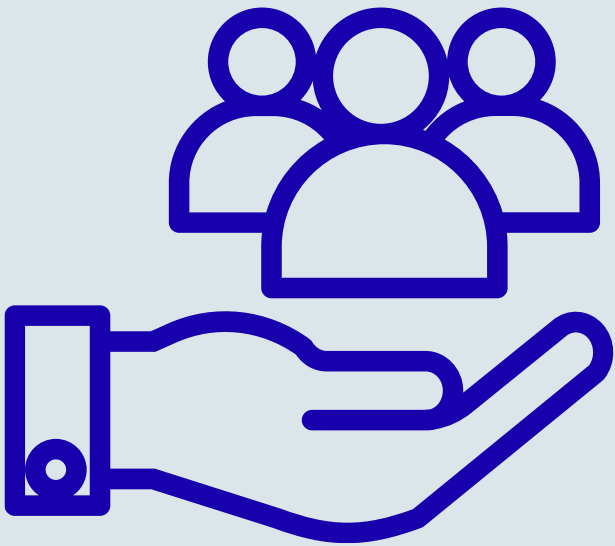
- Show Rate - 57%
- Scheduled - 1911
- Attended - 1086

September 2024

- Show Rate - 56%
- Scheduled - 1856
- Attended - 1045

FY 2026 Camden One-Stop NJDOL UI Totals YTD

September 2025



Avg. Per Month
1124



Customers Served
3372



Avg. Show Rate
58%