



FY 2026

# *Camden One-Stop NJDOL*

## Employment Services & Unemployment

*\*Statistics, Charts & FY 2025 Comparisons*

YTD November 2025



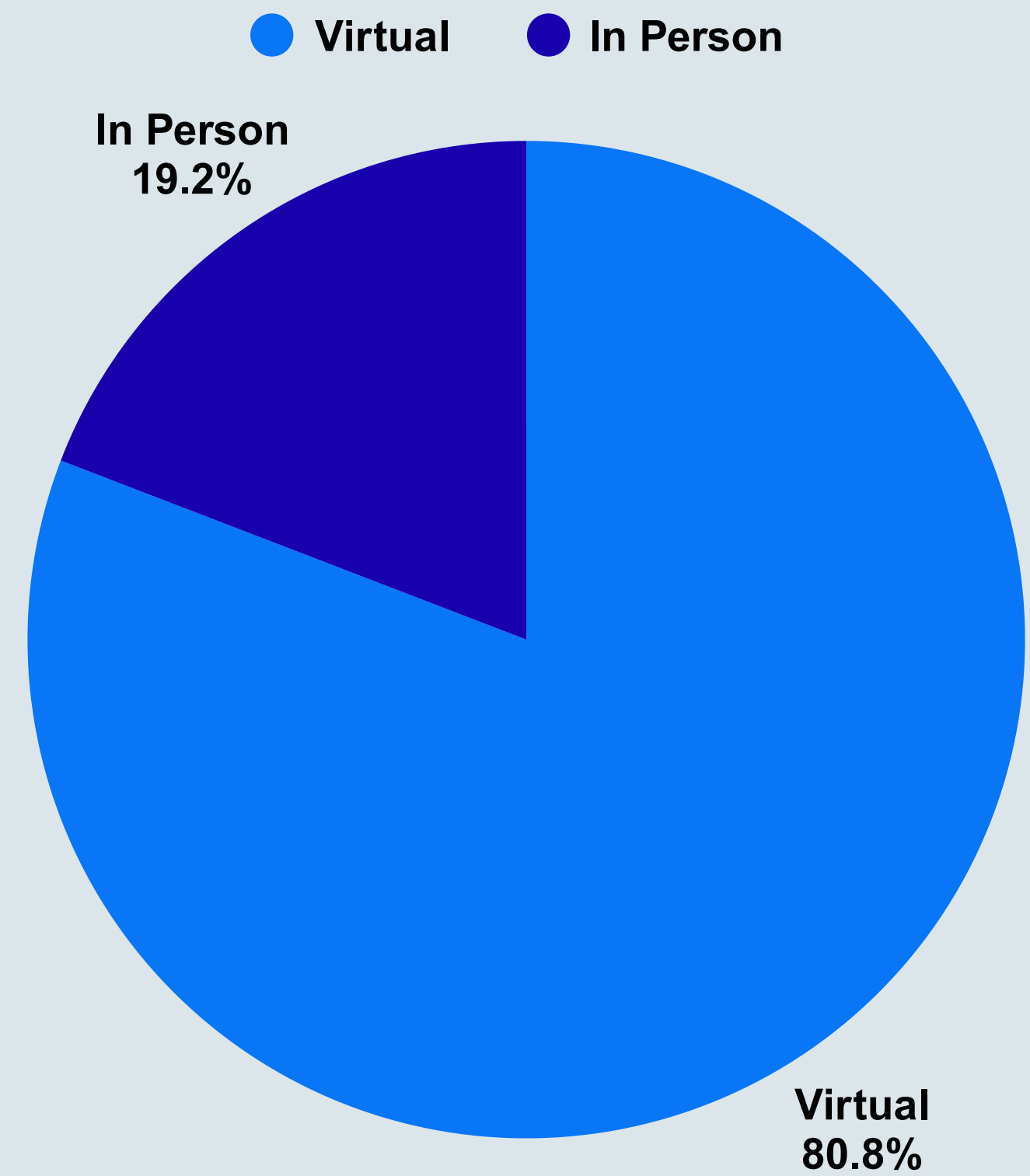
Total Customers  
Served - 402

Virtually - 81% / 325

In Person - 19% / 77

# Camden County One-Stop NJDOL ES

## 402 Customers Served - November 2025



# *Camden County One-Stop NJDOL Hybrid ES Customers*

**November 2025 Compared to  
November 2024**

---

## **November 2025**

- Total Customers - 402
- Virtual - 81% / 325
- In Person - 19% / 77

## **November 2024**

- Total Customers - 433
- Virtual - 73% / 316
- In Person - 27% / 117

Total Customers Served - 402

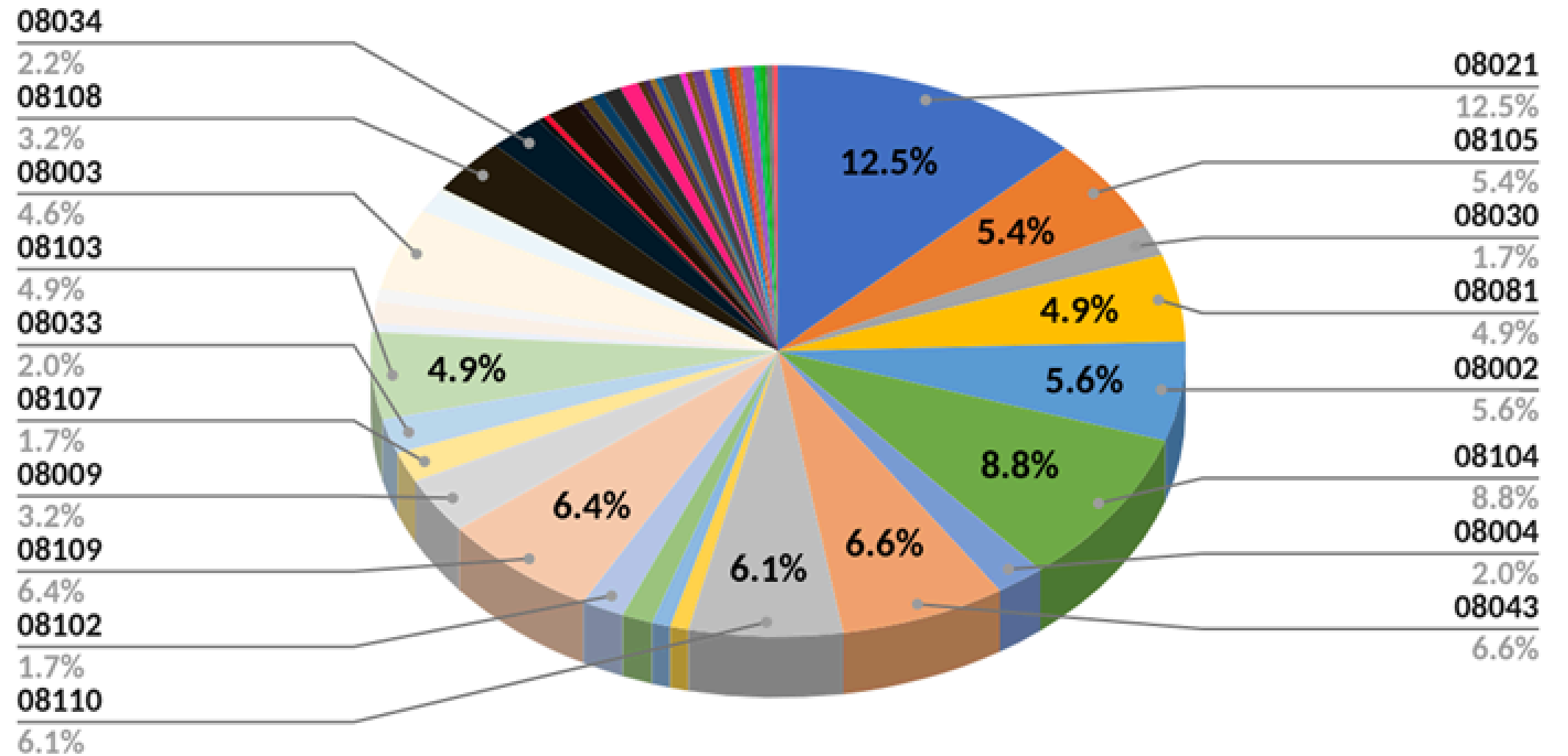
Camden - 20.8% / 85

Clementon &

Sicklerville - 17.4% / 71

# Camden County One-Stop NJDOL ES Customer Zip Codes - November 2025

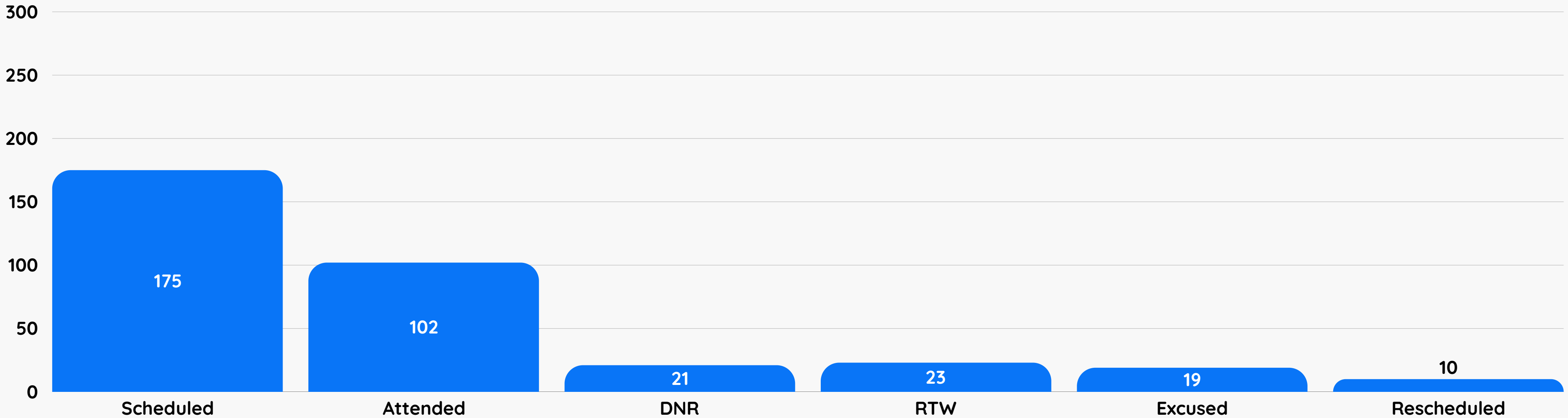
Camden County One-Stop NJDOL ES ZIP CODES - November 2025



# *RESEA Attendance Rate - 58% - November 2025*



● RESEA



# *FY 2026 NJDOL ES Totals YTD - November 2025*



**Avg. Customers  
Per Month - 526**



**Customers  
Served - 2630**



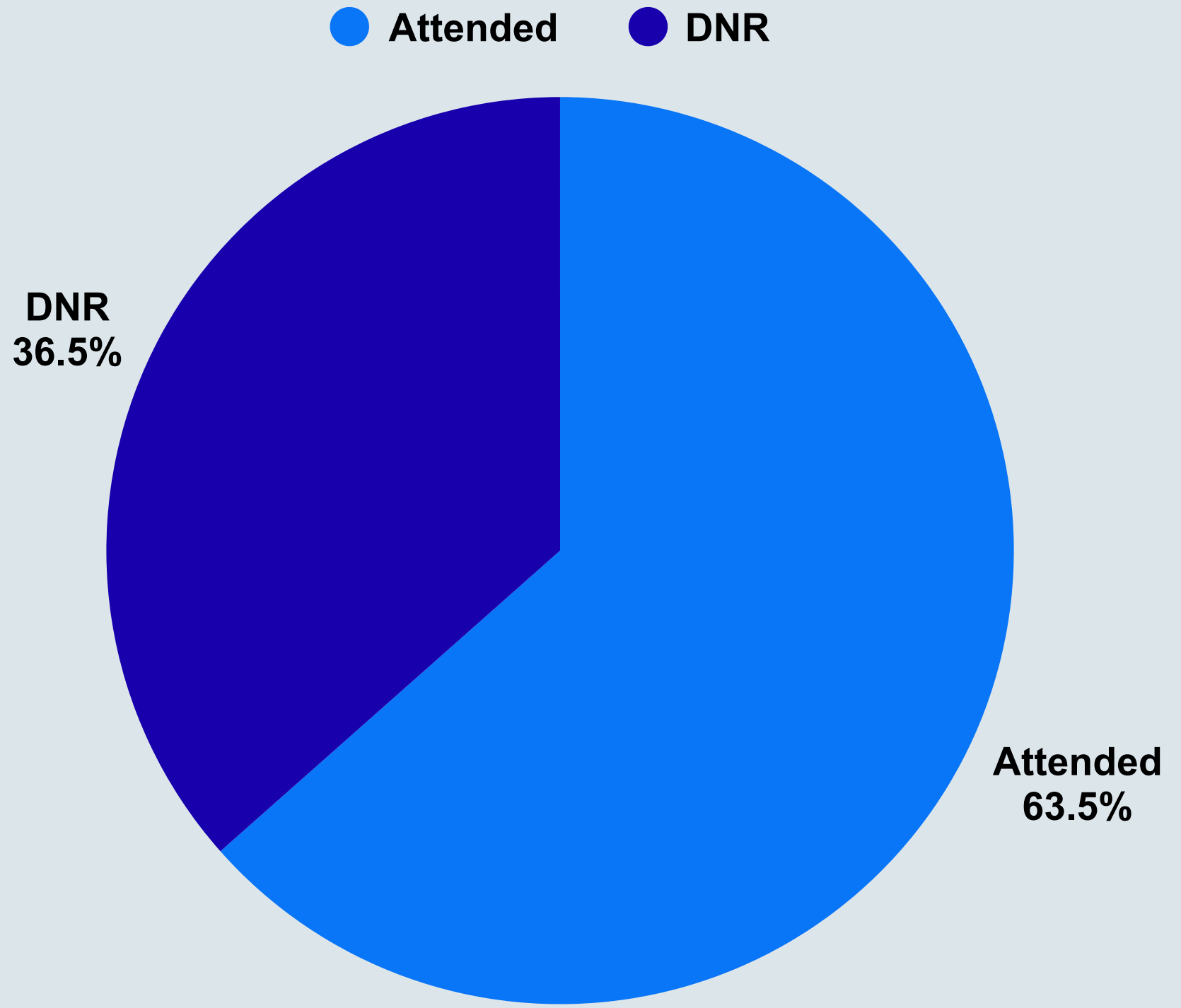
**Avg. Service Method  
74% Virtually  
26% In-Person**

Total UI Customers  
Scheduled - 1437

Attended - 63.5% / 912

DNR - 36.5% / 525

# Camden County One-Stop NJDOL UI 912 Customers Served - November 2025



# *Camden County One-Stop NJDOL UI Onsite Customers Served*

**November 2025 Compared to  
November 2024**

---

## November 2025

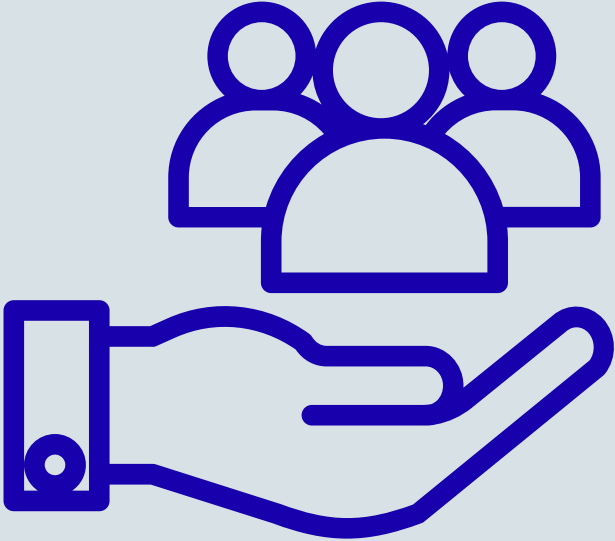
- Show Rate - 63.5%
- Scheduled - 1437
- Attended - 912

## November 2024

- Show Rate - 62.8%
- Scheduled - 1531
- Attended - 962

# *FY 2026 Camden One-Stop NJDOL UI Totals YTD*

*November 2025*



**Avg. Per Month**  
**1102**



**Customers Served**  
**5510**



**Avg. Show Rate**  
**60%**