



FY 2026

Camden One-Stop NJDOL

Employment Services & Unemployment

**Statistics, Charts & FY 2025 Comparisons*

YTD March 2026



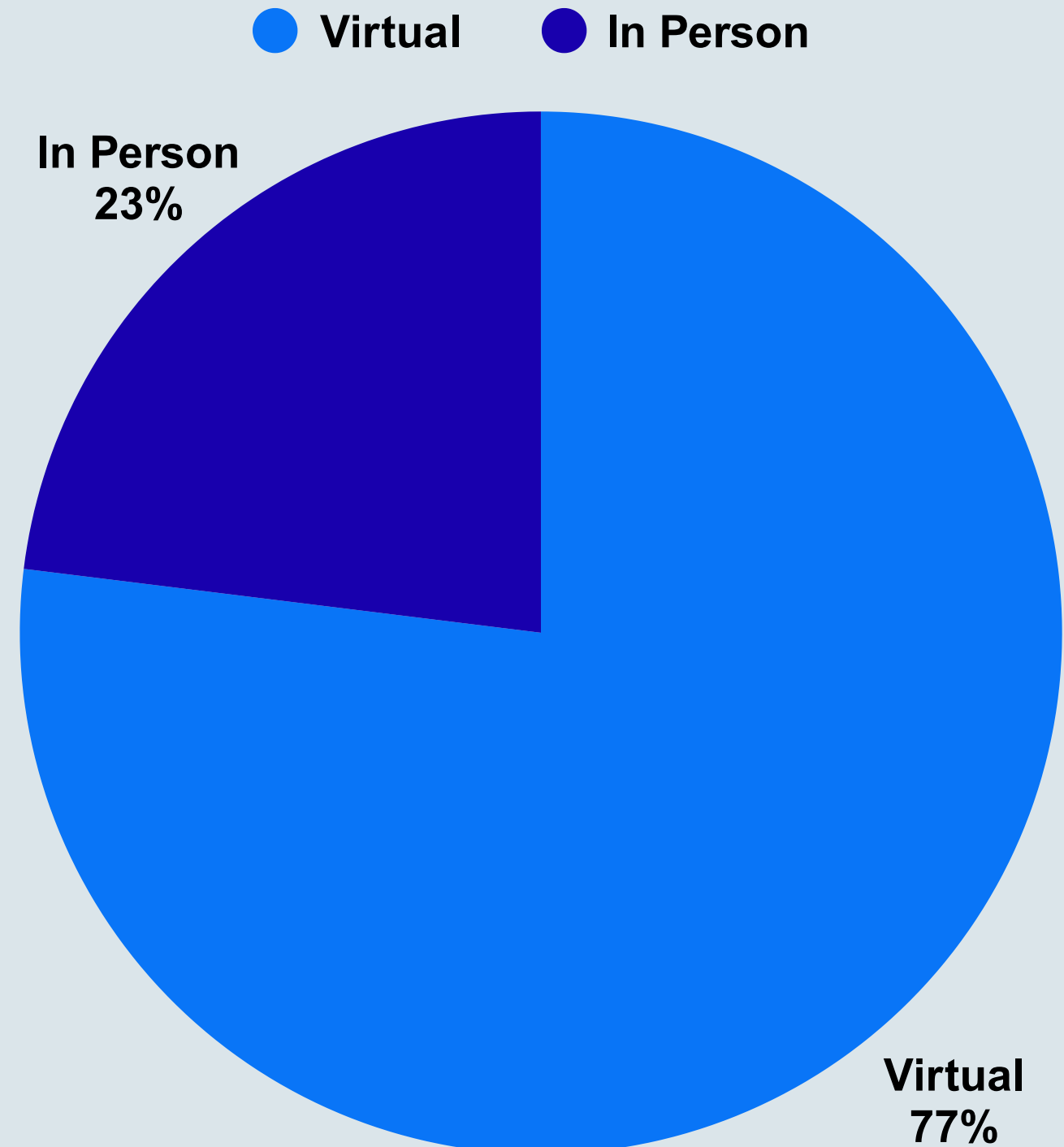
Total Customers
Served - 473

Virtually - 77% / 364

In Person - 23% / 109

Camden County One-Stop NJDOL ES

473 Customers Served - March 2026



Camden County One-Stop NJDOLE Hybrid ES Customers

**March 2026 Compared to
March 2025**

March 2026

- Total Customers - 473
- Virtual - 77% / 294
- In Person - 23% / 109

March 2025

- Total Customers - 585
- Virtual - 77% / 451
- In Person - 23% / 134

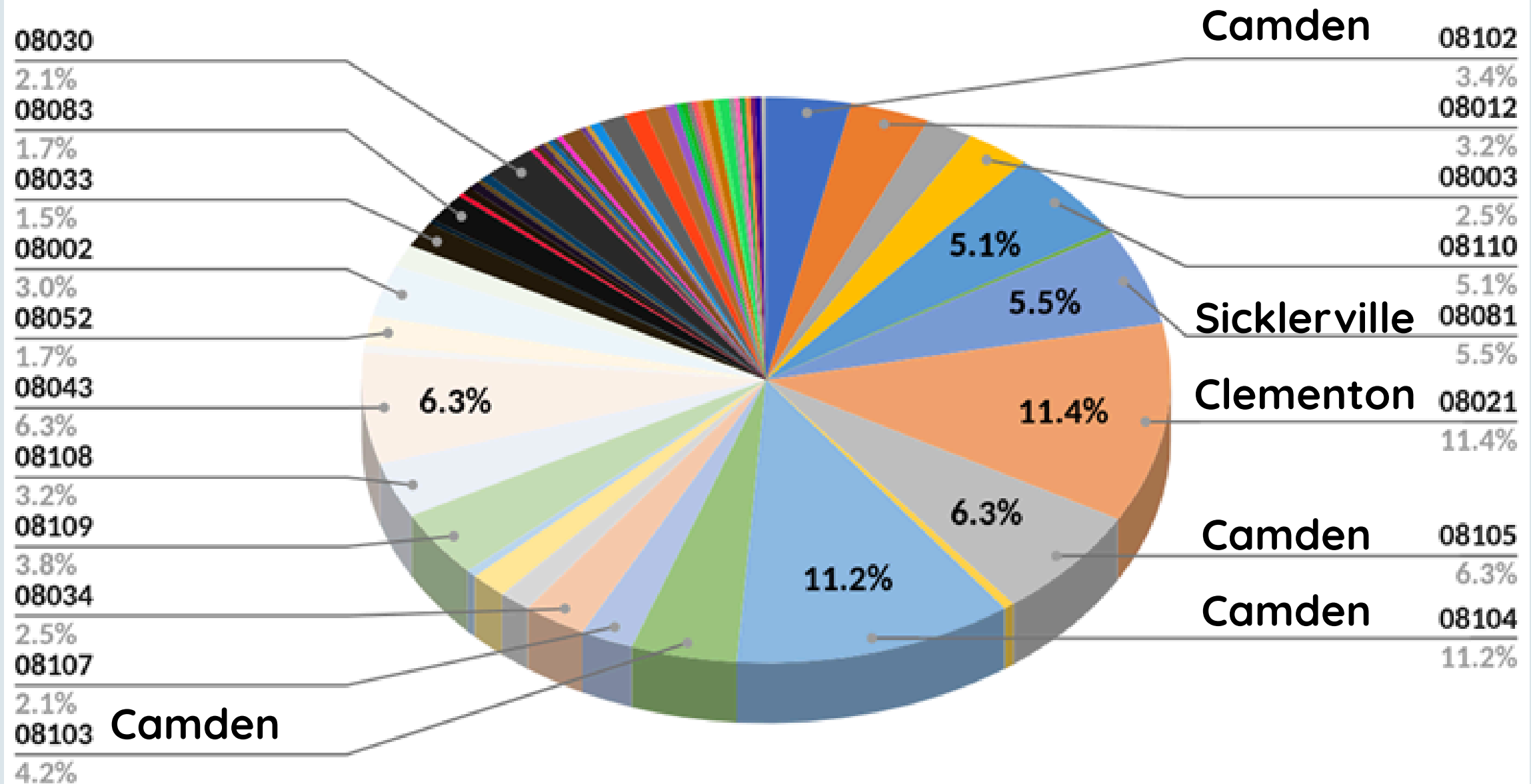
Total Hybrid
Customers Served - 473

Camden - 25.1% / 119

Clementon &
Sicklerville - 16.9% / 80

Camden County One-Stop NJDOL ES Customer Zip Codes - March 2026

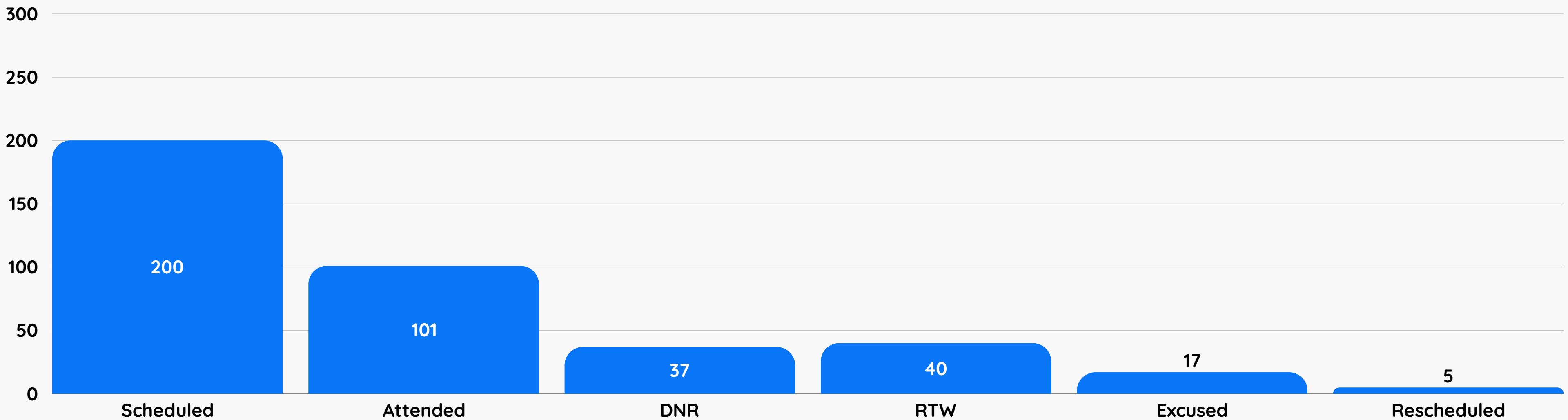
Camden County One-Stop NJDOL ES Customer Zip Codes - March 2026



RESEA Attendance Rate - 51% - March 2026



● RESEA



FY 2026 NJDOL ES Totals YTD - March 2026



**Avg. Customers
Per Month - 498**



**Customers
Served - 4483**



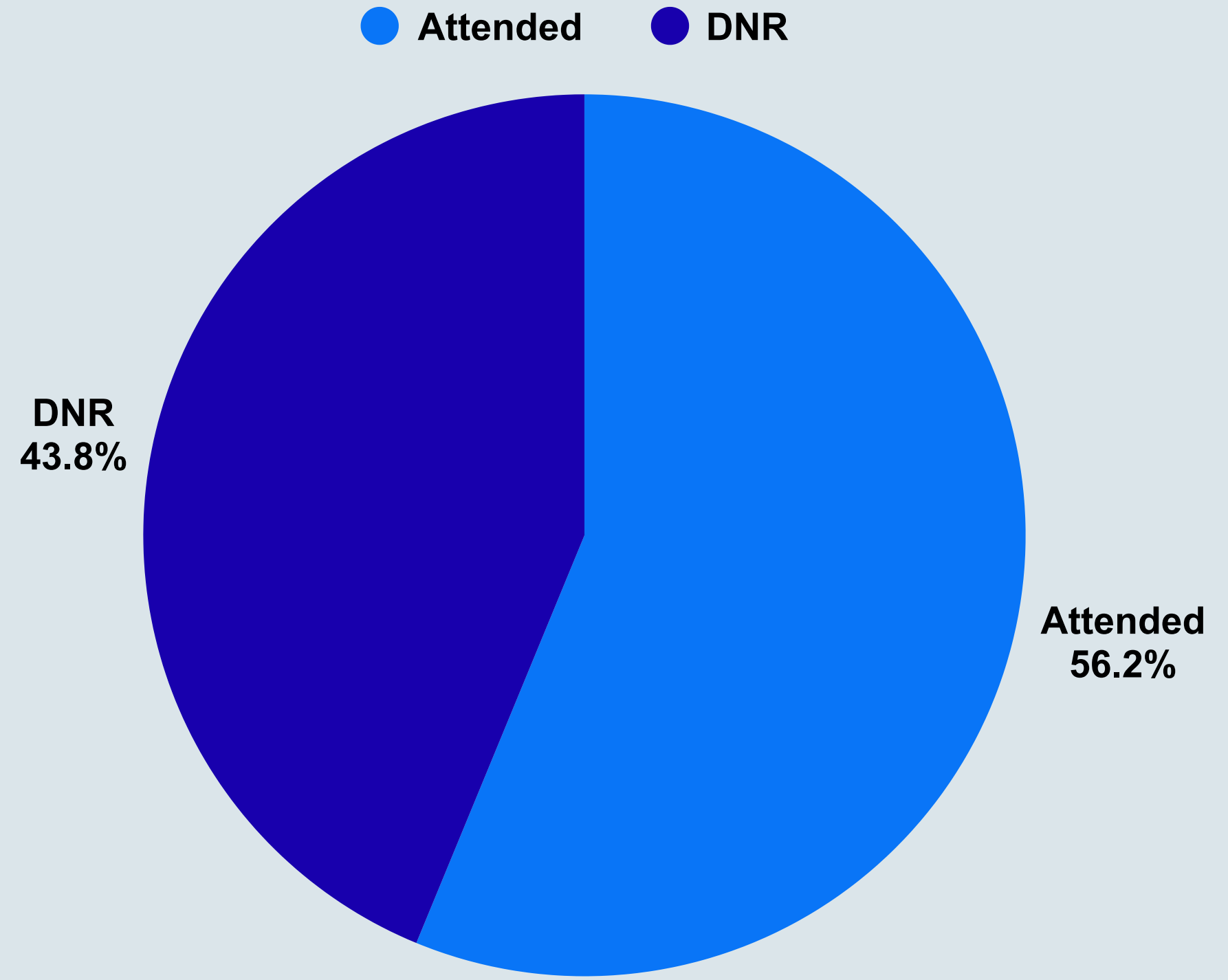
**Avg. Service Method
75% Virtually
25% In-Person**

Total UI Customers
Scheduled - 2499

Attended - 56% / 1405

DNR - 44% / 1094

Camden County One-Stop NJDOL UI 1405 Customers Served - March 2026



Camden County One-Stop NJDOL UI Onsite Customers Served

**March 2026 Compared to
March 2025**

March 2026

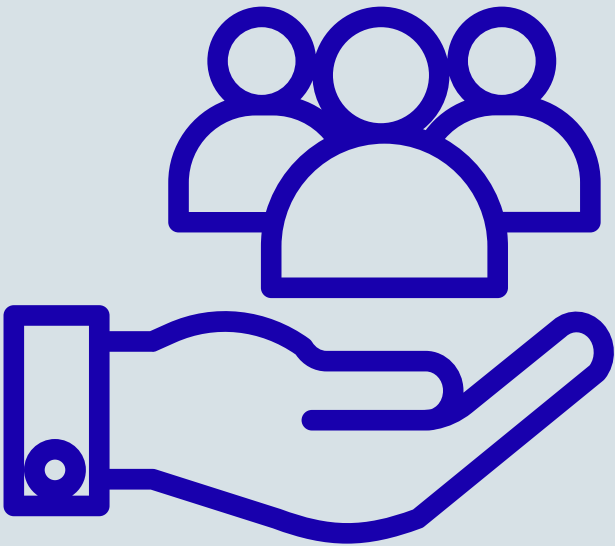
- Show Rate - 56%
- Scheduled - 2499
- Attended - 1405

March 2025

- Show Rate - 56%
- Scheduled - 1941
- Attended - 1094

FY 2026 Camden One-Stop NJDOL UI Totals YTD

March 2026



Avg. Per Month
1070



Customers Served
9967



Avg. Show Rate
59%