



FY 2026

# *Camden One-Stop NJDOL*

## Employment Services & Unemployment

*\*Statistics, Charts & FY 2025 Comparisons*

YTD July 2025



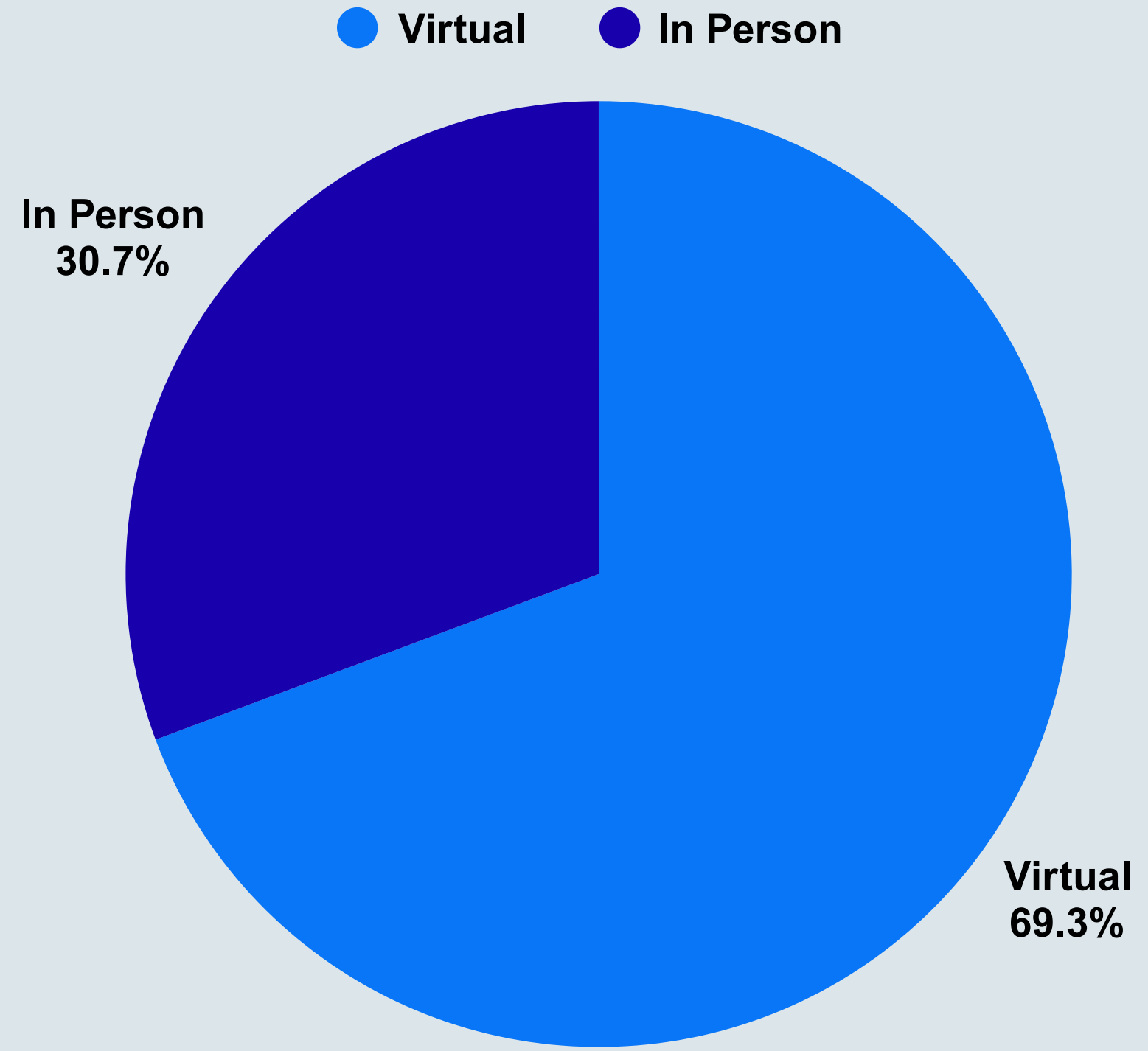
Total Customers  
Served - 505

Virtually - 69% / 350

In Person - 31% / 105

# Camden County One-Stop NJDOL ES

## 505 Customers Served - July 2025



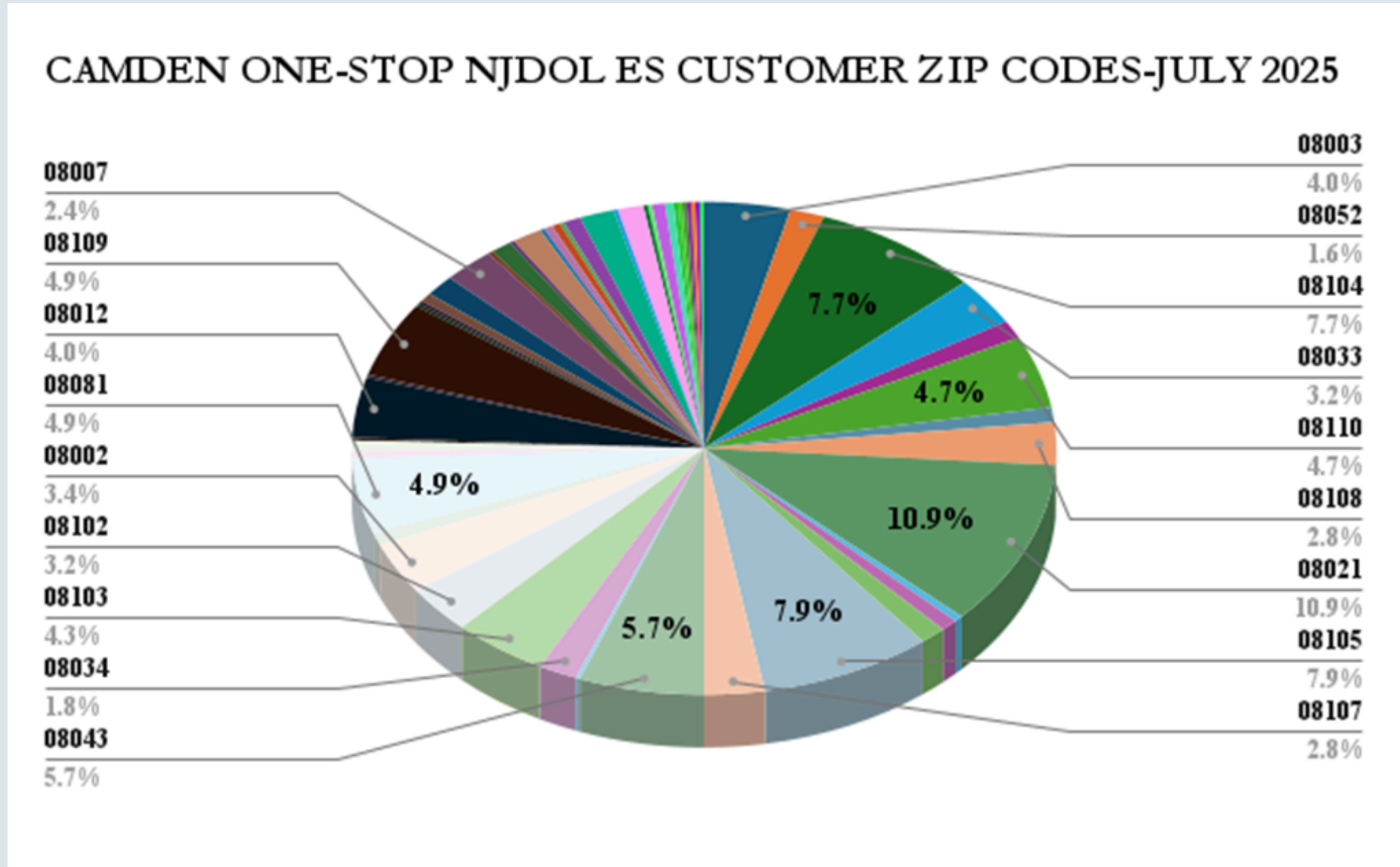
Total Customers Served - 505

Camden - 23.1% / 117

Sicklerville &

Clementon - 15.8% / 80

# Camden County One-Stop NJDOL ES Customer Zip Codes - July 2025



# *Camden County One-Stop NJDOL ES Customer Zip Codes*

**July 2025 Compared to July 2024**

---

## July 2025

- Total Customers - 505
- Camden - 23.1% / 117
- Clementon / Sicklerville - 15.8% / 80

## July 2024

- Total Customers - 698
- Camden - 22.8% / 159
- Clementon / Sicklerville - 17.2% / 120

# *RESEA Attendance Rate - 57% - July 2025*



● RESEA



# *FY 2026 NJDOL ES Totals YTD - July 2025*



**Avg. Customers  
Per Month - 505**



**Customers  
Served - 505**



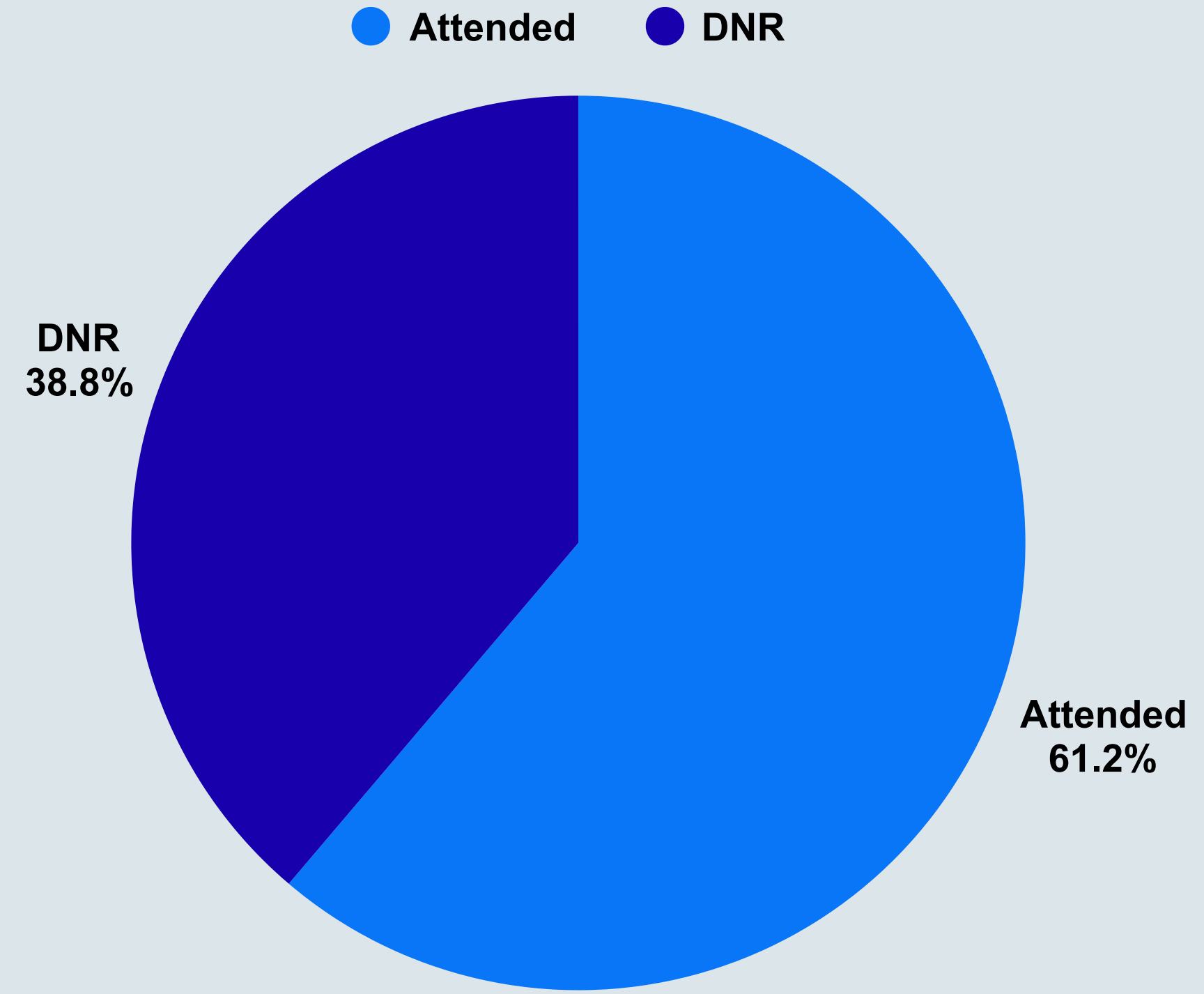
**Avg. Service Method  
69% Virtually  
31% In-Person**

Total UI Customers  
Served - 1980

Attended - 61% / 1212

DNR - 39% / 768

# Camden County One-Stop NJDOL UI 1980 Customers Served - July 2025



# *Camden County One-Stop NJDOL UI Onsite Customers Served*

**July 2025 Compared to July 2024**

---

## July 2025

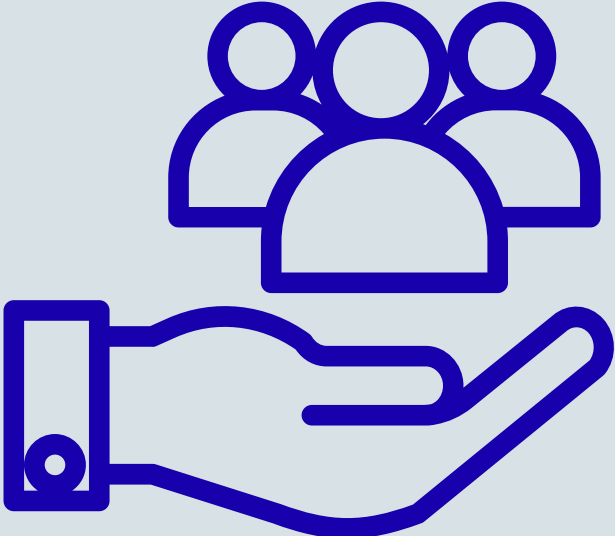
- Show Rate - 61%
- Scheduled - 1980
- Attended - 1212

## July 2024

- Show Rate - 56%
- Scheduled - 1942
- Attended - 1078

# *FY 2026 Camden One-Stop NJDOL UI Totals YTD*

*July 2025*



**Avg. Per Month**  
**1212**



**Customers Served**  
**1212**



**Avg. Show Rate**  
**61%**