



FY 2026

Camden One-Stop NJDOL

Employment Services & Unemployment

**Statistics, Charts & FY 2025 Comparisons*

YTD January 2026



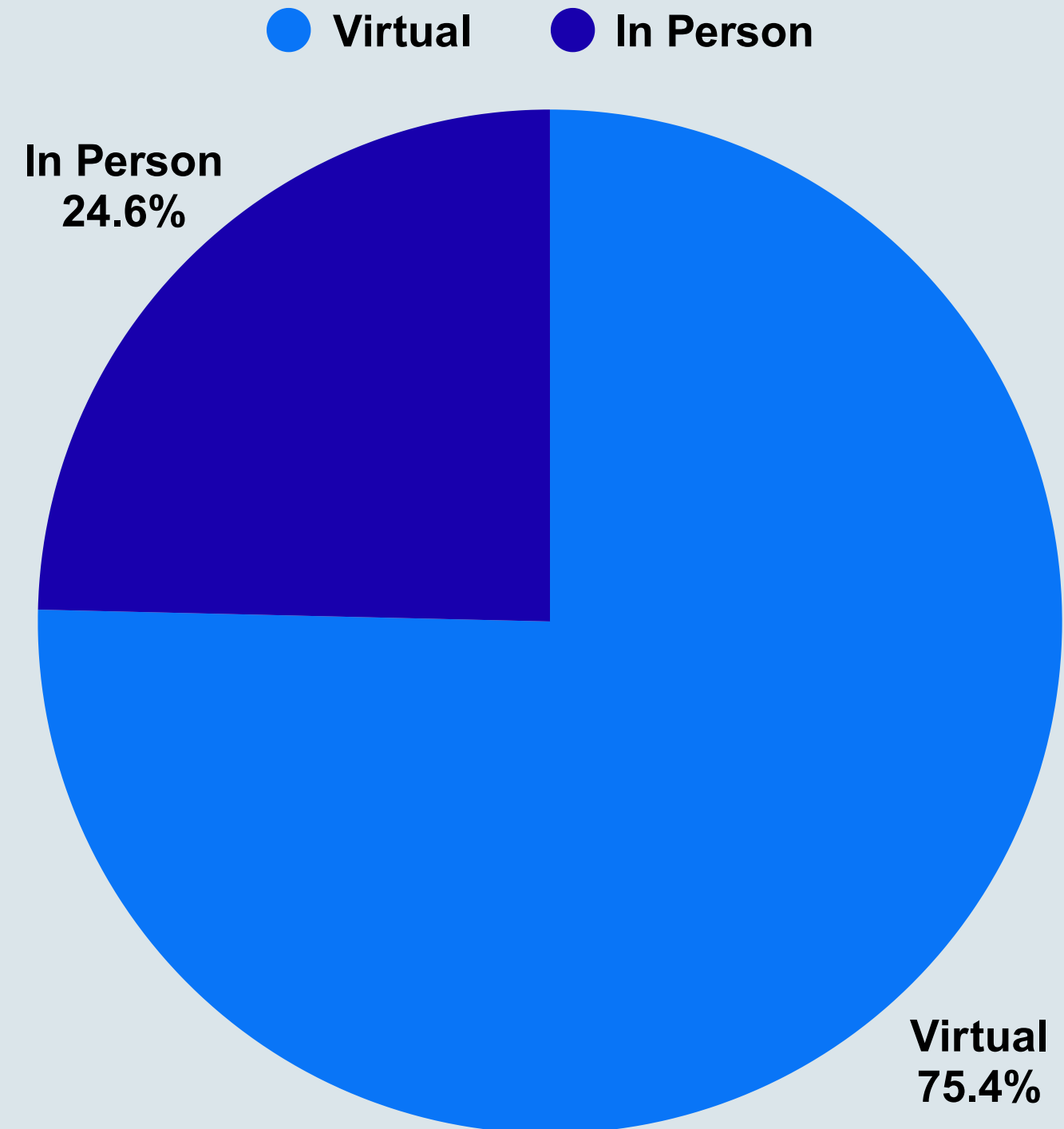
Total Customers
Served - 475

Virtually - 75% / 358

In Person - 25% / 117

Camden County One-Stop NJDOL ES

475 Customers Served - January 2026



Camden County One-Stop NJDOLE Hybrid ES Customers

**January 2026 Compared to
January 2025**

January 2026

- Total Customers - 475
- Virtual - 75% / 358
- In Person - 25% / 117

January 2025

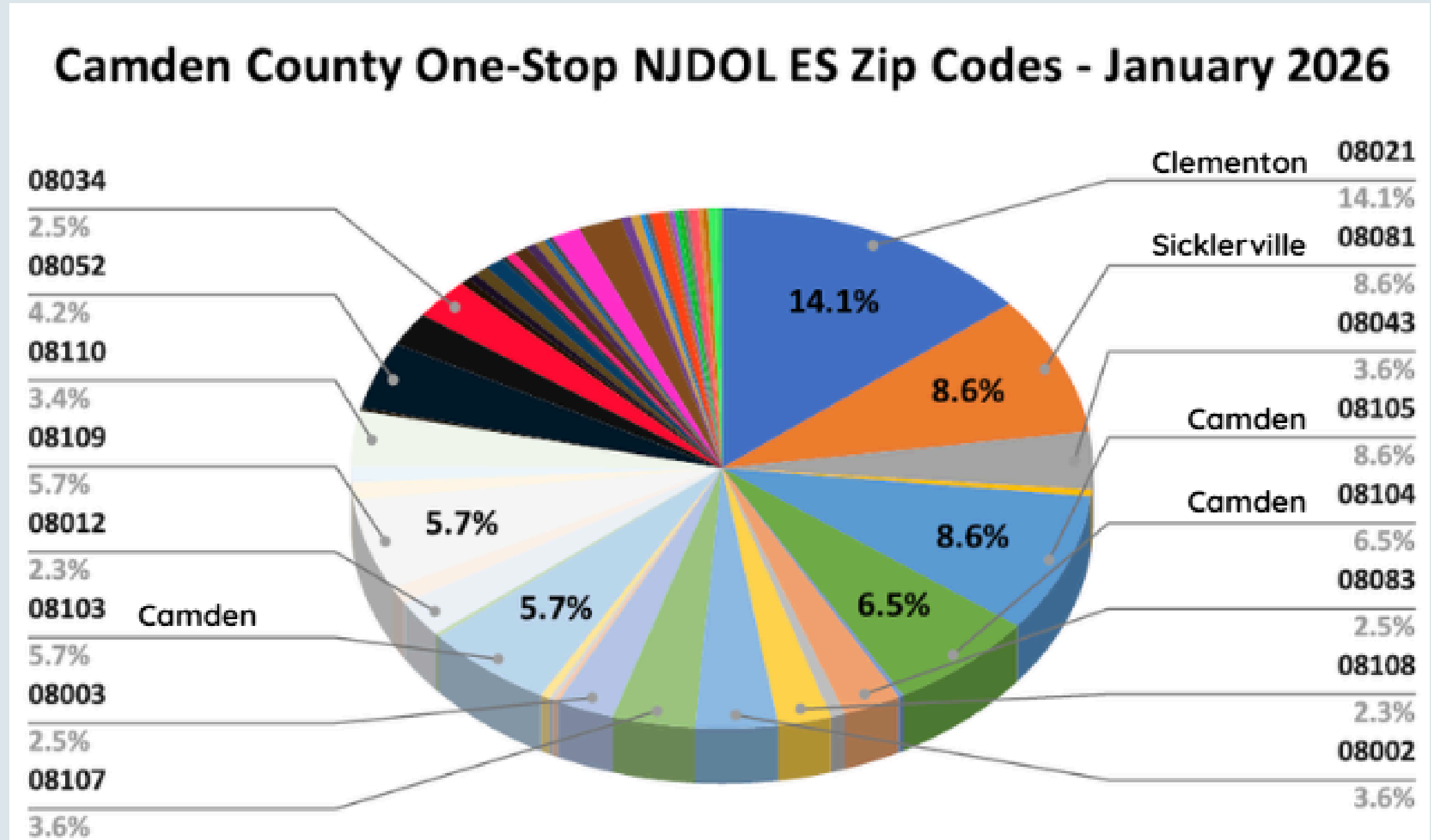
- Total Customers - 655
- Virtual - 76% / 499
- In Person - 24% / 156

Total Customers Served - 475

Camden - 21.9% / 104

Sicklerville & Clementon - 22.7% / 108

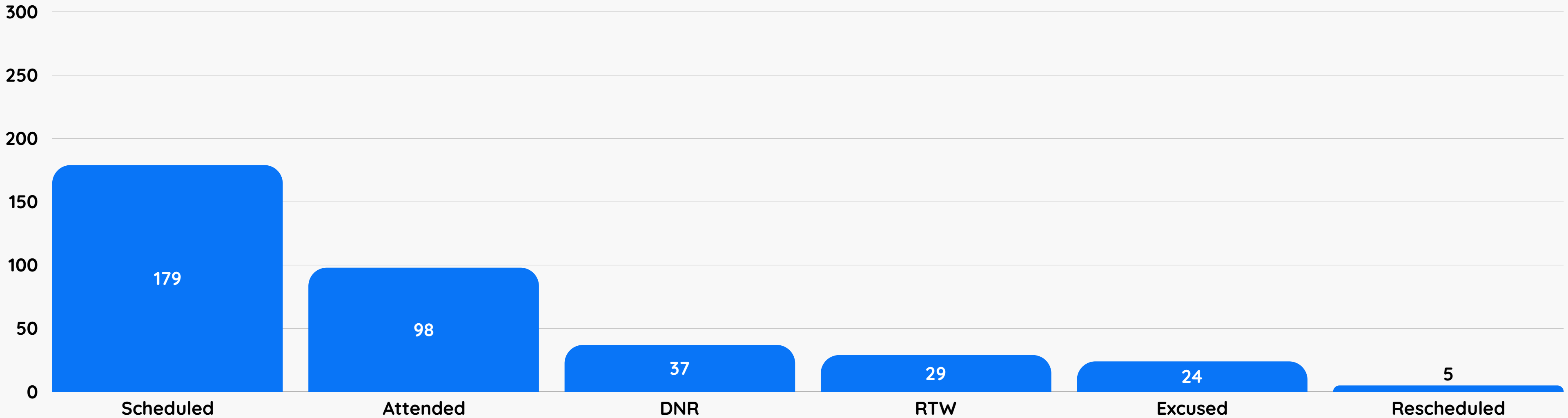
Camden County One-Stop NJDOL ES Customer Zip Codes - January 2026



RESEA Attendance Rate - 55% - January 2026



● RESEA



FY 2026 NJDOL ES Totals YTD - January 2026



**Avg. Customers
Per Month - 508**



**Customers
Served - 3556**



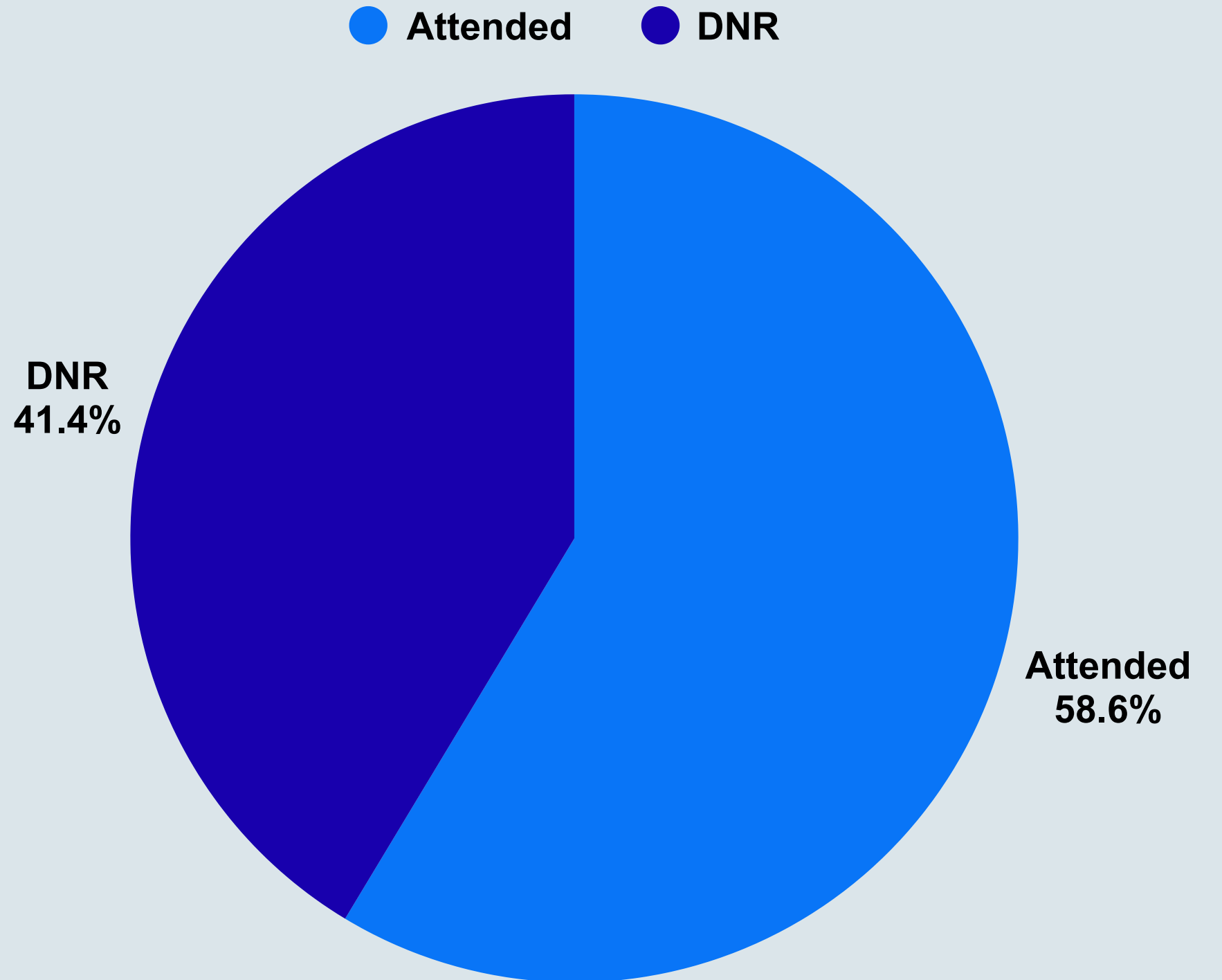
**Avg. Service Method
75% Virtually
25% In-Person**

Total UI Customers
Served - 1022

Attended - 58.6% / 1022

DNR - 41.4% / 721

Camden County One-Stop NJDOL UI 1022 Customers Served - January 2026



Camden County One-Stop NJDOL UI Onsite Customers Served

**January 2026 Compared to
January 2025**

January 2026

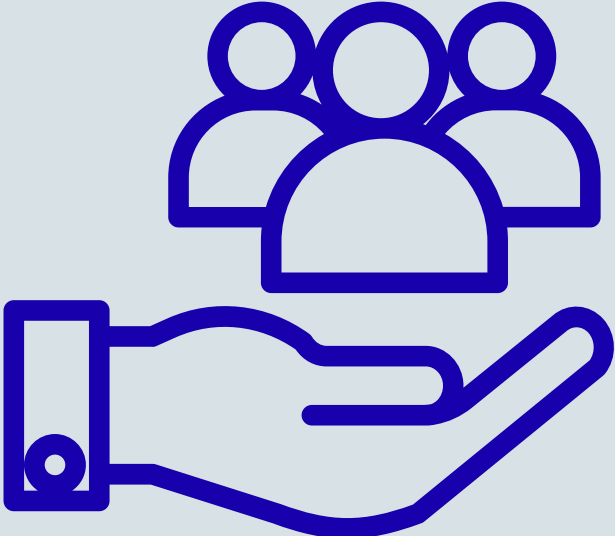
- Show Rate - 58.6%
- Scheduled - 1743
- Attended - 1022

January 2025

- Show Rate - 62%
- Scheduled - 1889
- Attended - 1169

FY 2026 Camden One-Stop NJDOL UI Totals YTD

January 2026



Avg. Per Month
1096



Customers Served
7672



Avg. Show Rate
60%