



FY 2026

Camden One-Stop NJDOL

Employment Services & Unemployment

**Statistics, Charts & FY 2025 Comparisons*

YTD December 2025



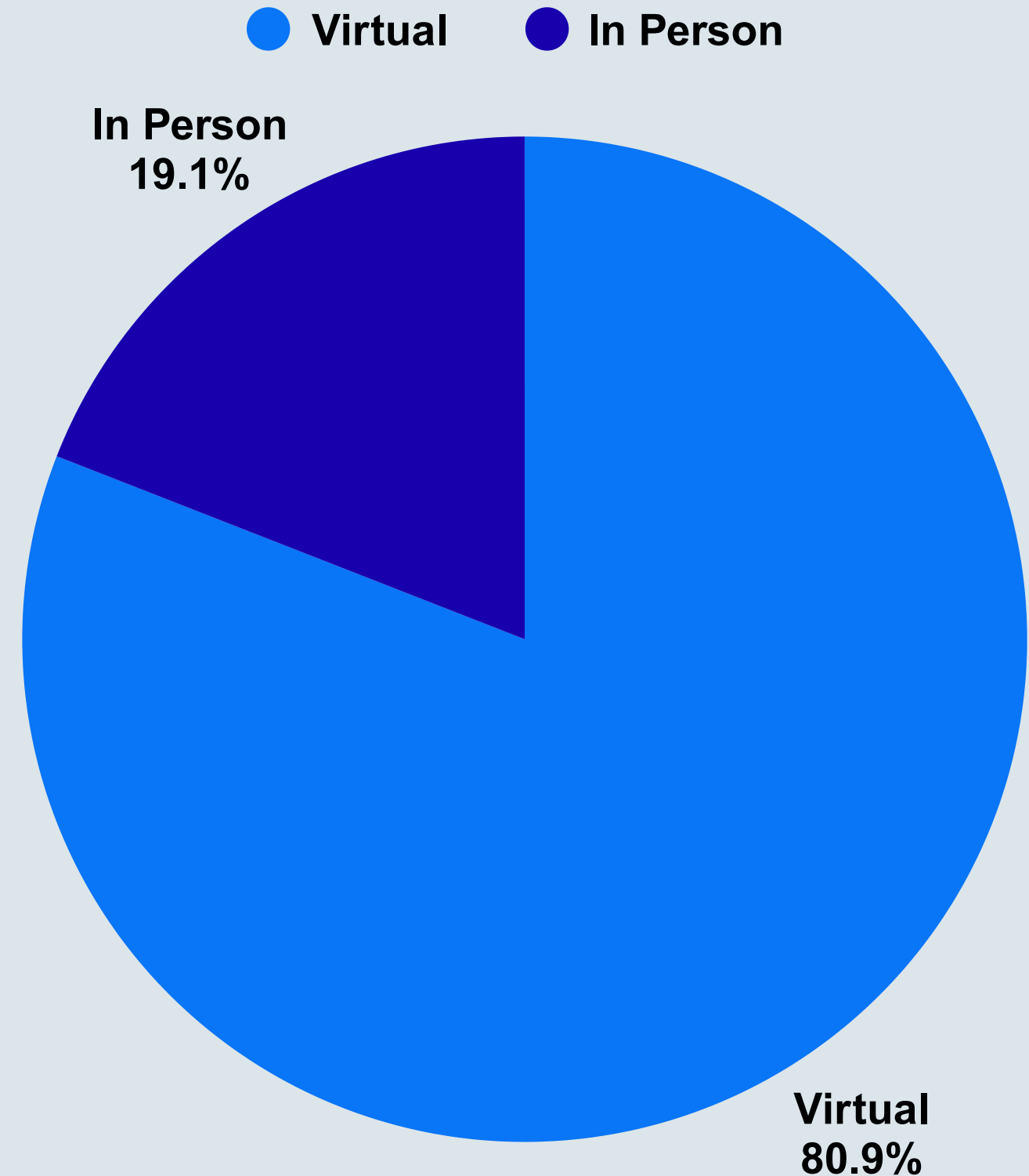
Total Customers
Served - 451

Virtually - 81% / 365

In Person - 19% / 86

Camden County One-Stop NJDOL ES

451 Customers Served - December 2025



Camden County One-Stop NJDOLE Hybrid ES Customers

**December 2025 Compared to
December 2024**

December 2025

- Total Customers - 451
- Virtual - 81% / 365
- In Person - 19% / 86

December 2024

- Total Customers - 441
- Virtual - 72% / 318
- In Person - 28% / 123

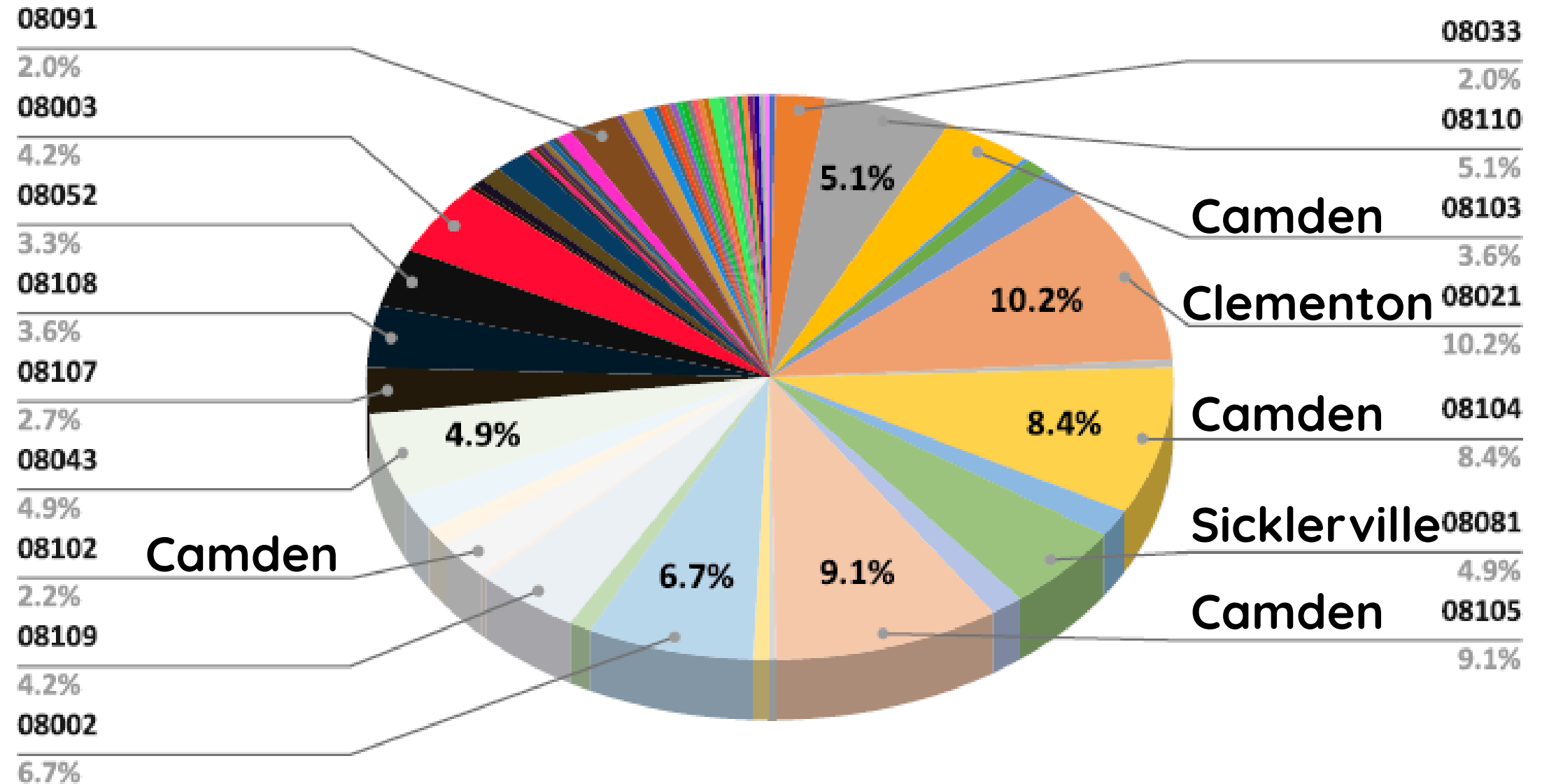
Total Customers Served - 451

Camden - 23.3% / 105

Sicklerville & Clementon - 15.1% / 68

Camden County One-Stop NJDOL ES Customer Zip Codes - December 2025

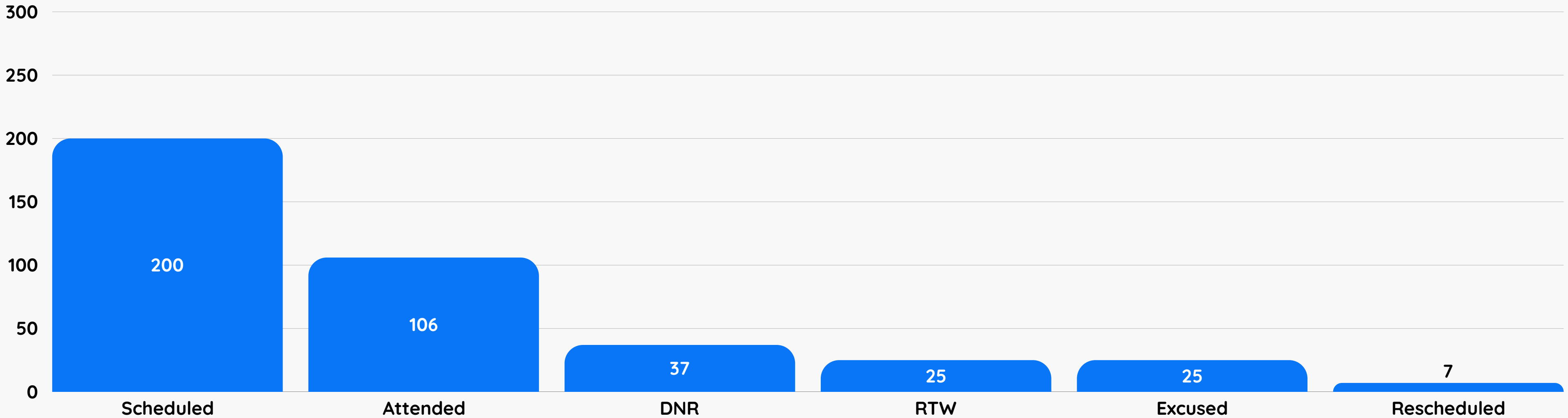
Camden County One-Stop NJDOL ES Zip Codes - December 2025



RESEA Attendance Rate - 53% - December 2025



● RESEA



FY 2026 NJDOL ES Totals YTD - December 2025



**Avg. Customers
Per Month - 514**



**Customers
Served - 3081**



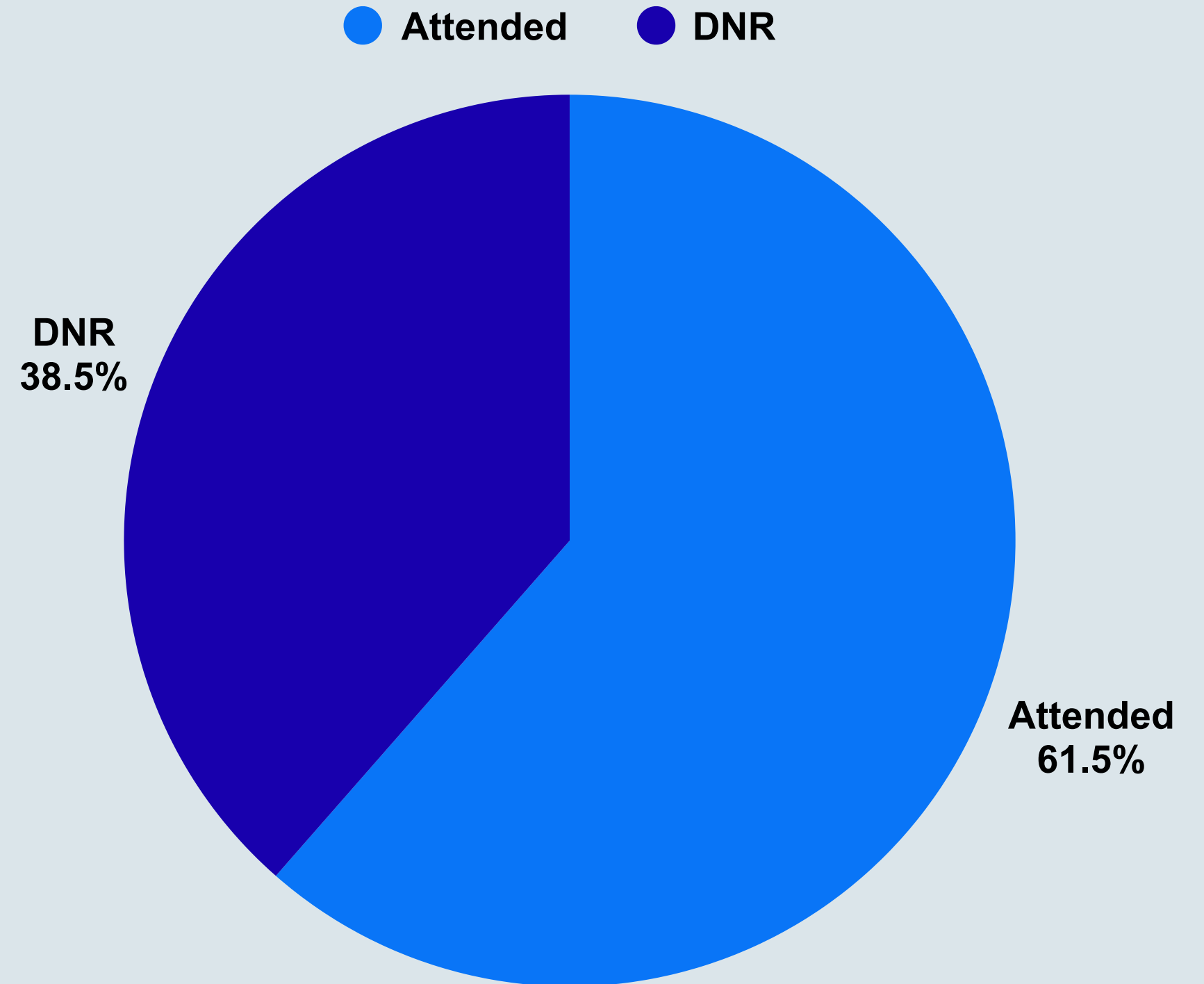
**Avg. Service Method
75% Virtually
25% In-Person**

Total UI Customers
Served - 1140

Attended - 61.5% / 1140

DNR - 38.5% / 715

Camden County One-Stop NJDOL UI 1140 Customers Served - December 2025



Camden County One-Stop NJDOL UI Onsite Customers Served

**December 2025 Compared to
December 2024**

December 2025

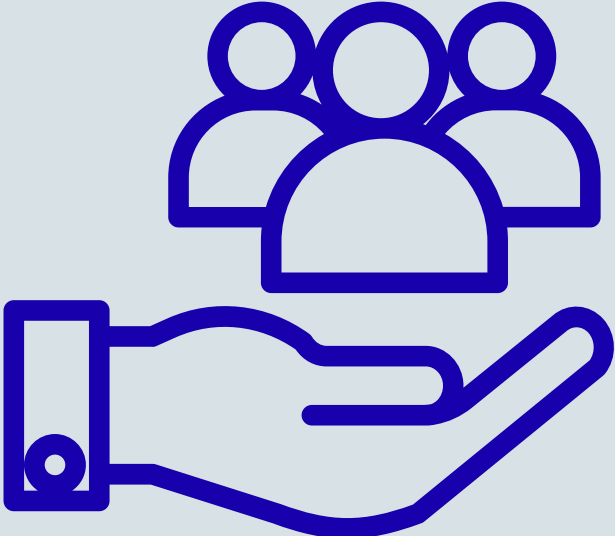
- Show Rate - 61.5%
- Scheduled - 1855
- Attended - 1140

December 2024

- Show Rate - 64%
- Scheduled - 1901
- Attended - 1218

FY 2026 Camden One-Stop NJDOL UI Totals YTD

December 2025



Avg. Per Month
1108



Customers Served
6650



Avg. Show Rate
60%