



FY 2026

# *Camden One-Stop NJDOL*

## Employment Services & Unemployment

*\*Statistics, Charts & FY 2025 Comparisons*

YTD August 2025



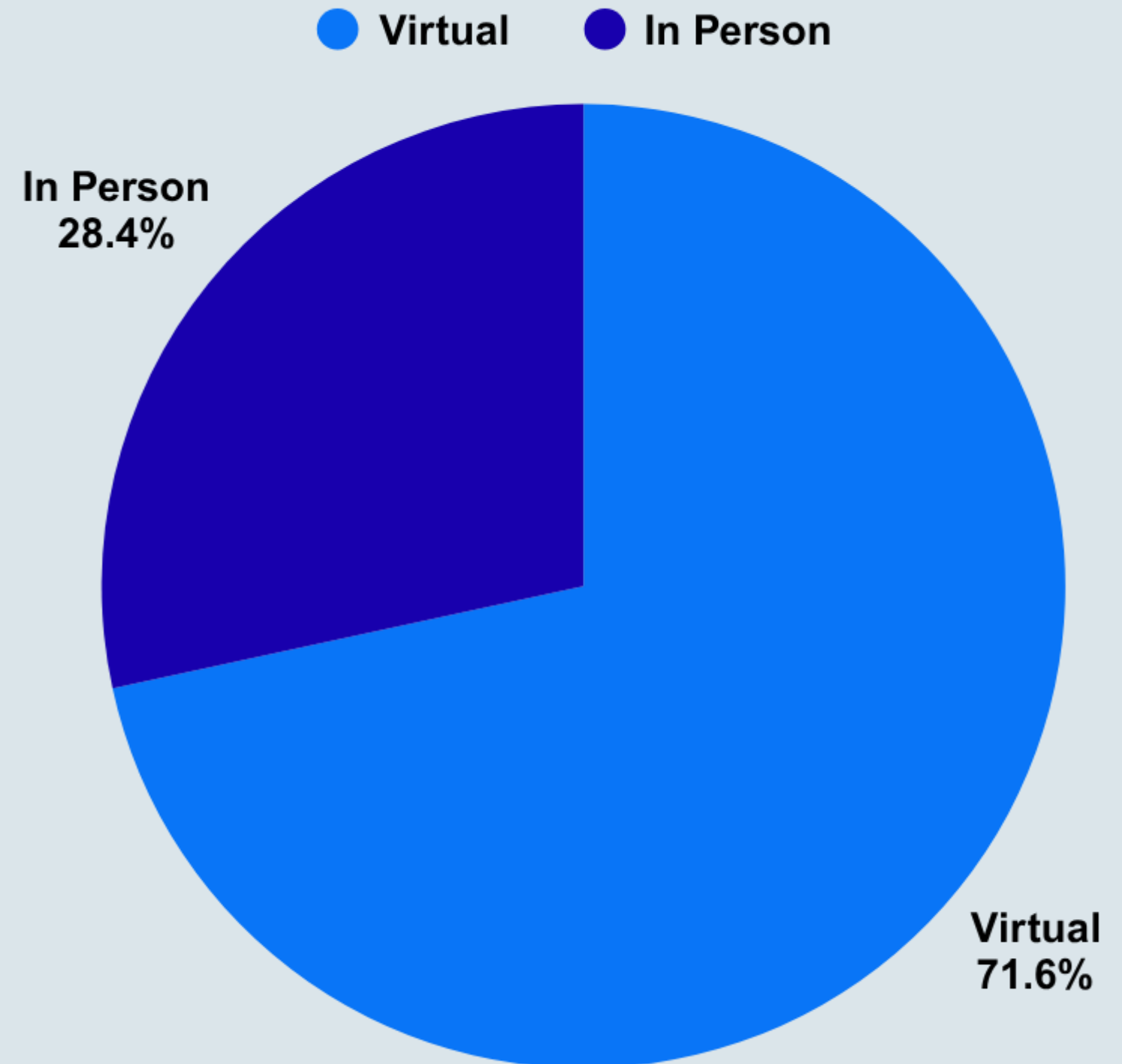
Total Customers  
Served - 507

Virtually - 72% / 365

In Person - 28% / 142

# Camden County One-Stop NJDOL ES

## 507 Customers Served - August 2025



# *Camden County One-Stop NJDOL Hybrid ES Customer*

## *August 2025 Compared to August 2024*

---

### August 2025

- Total Customers - 507
- Virtual - 72% / 365
- In Person - 28% / 142

### August 2024

- Total Customers - 710
- Virtual - 76% / 540
- In Person - 24% / 170

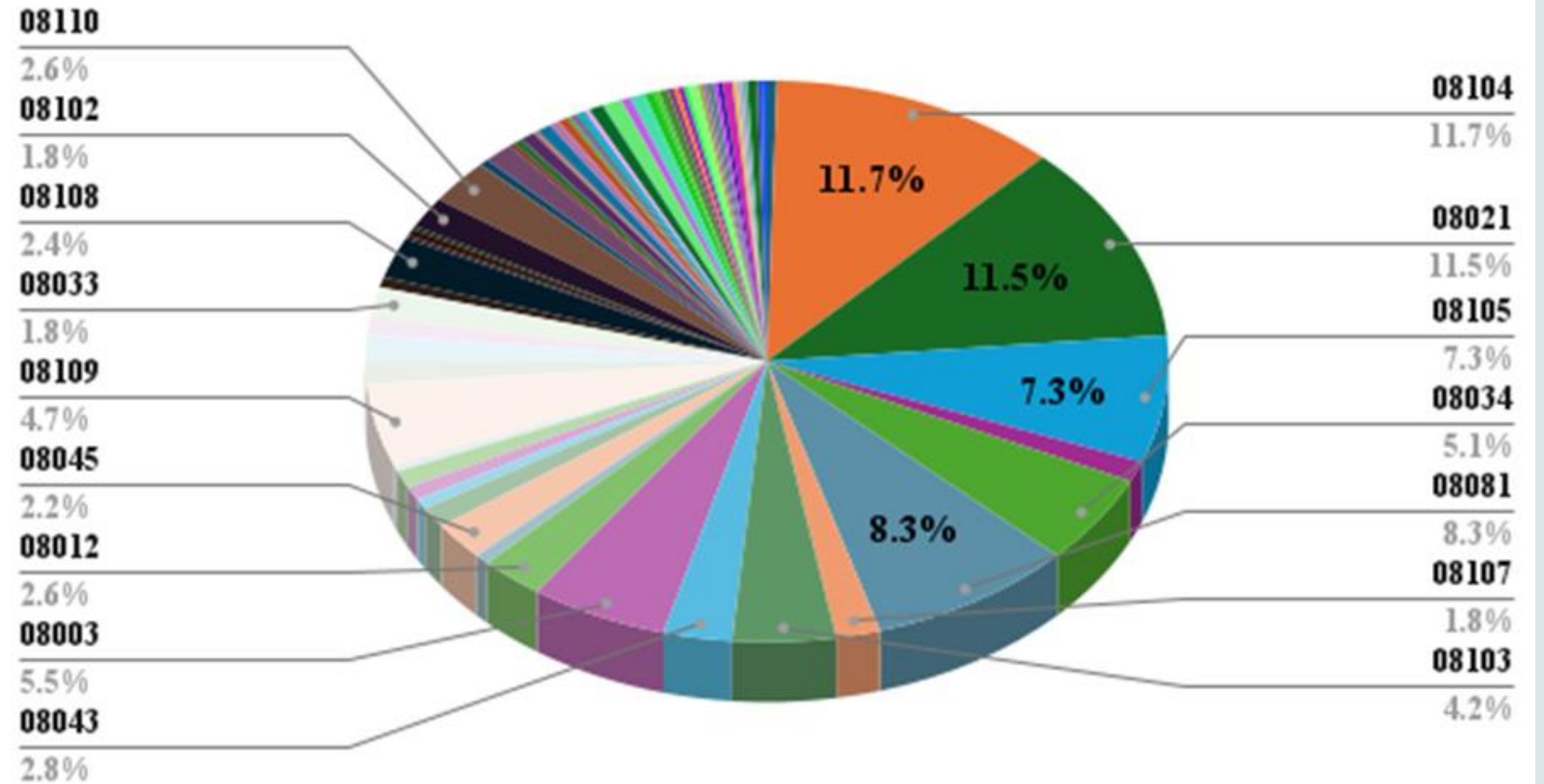
Total Customers Served - 507

Camden - 25.0% / 126

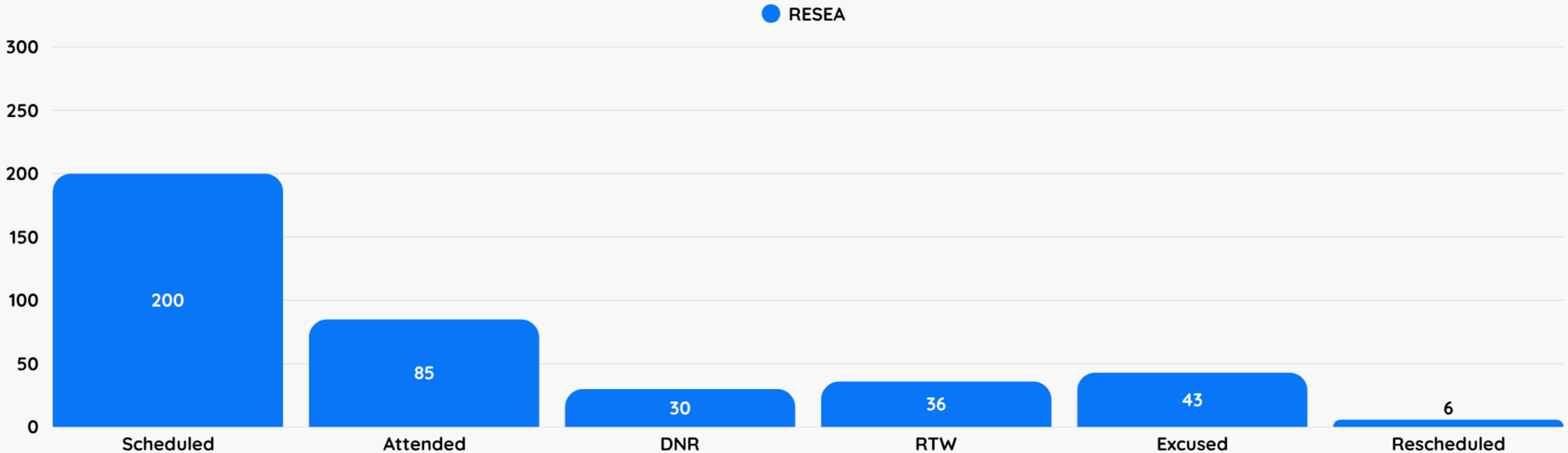
Sicklerville & Clementon - 19.6% / 100

# Camden County One-Stop NJDOL ES Customer Zip Codes - August 2025

CAMDEN ONE-STOP NJDOL ES CUSTOMER ZIP CODES AUGUST 2025



# *RESEA Attendance Rate - 43% - August 2025*



# *FY 2026 NJDOL ES Totals YTD - August 2025*



**Avg. Customers  
Per Month - 506**



**Customers  
Served - 1011**



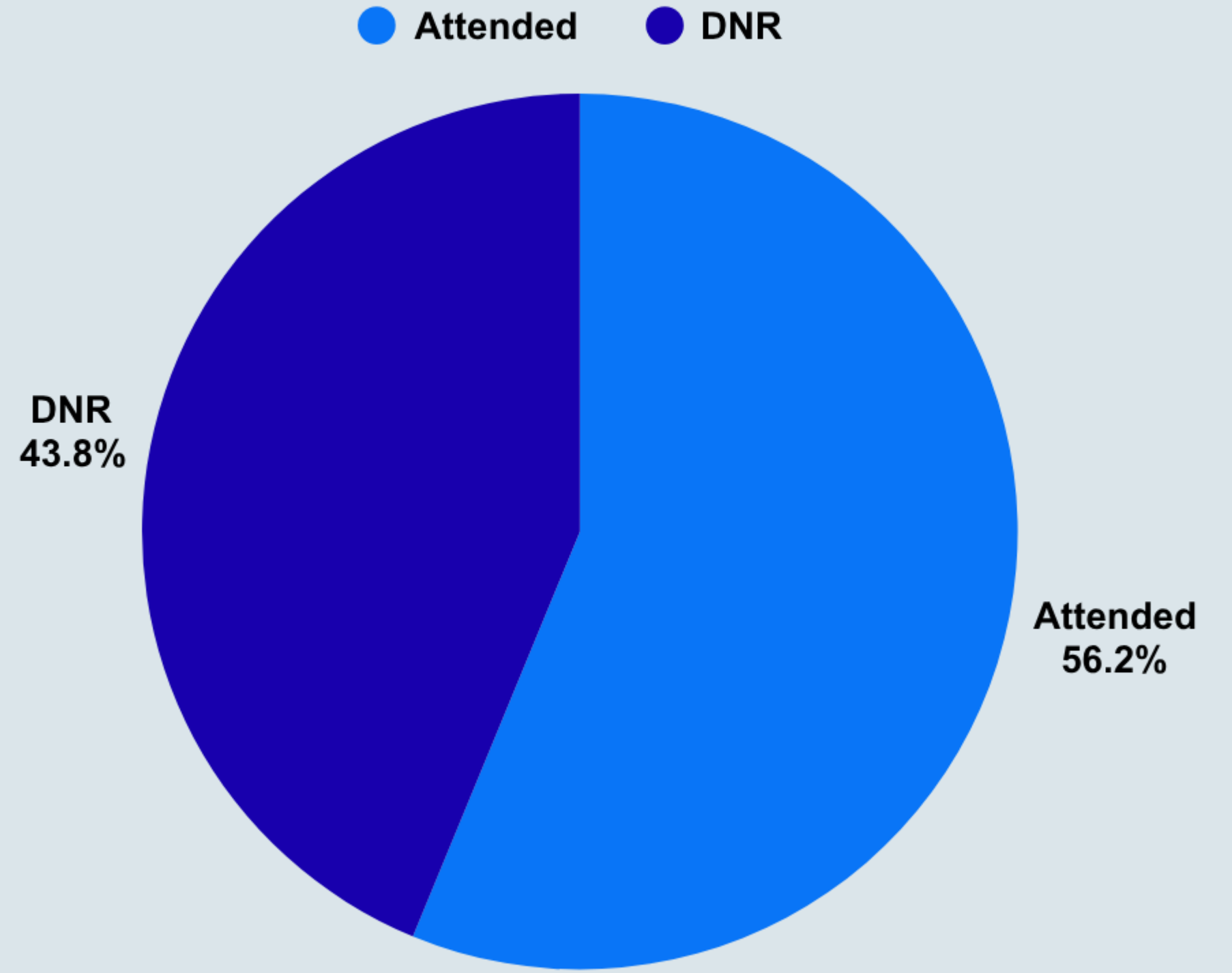
**Avg. Service Method  
70% Virtually  
30% In-Person**

Total UI Customers  
Served - 1910

Attended - 56% / 1074

DNR - 44% / 836

# Camden County One-Stop NJDOL UI 1910 Customers Served - August 2025



# *Camden County One-Stop NJDOL UI Onsite Customers Served*

**August 2025 Compared to  
August 2024**

---

## August 2025

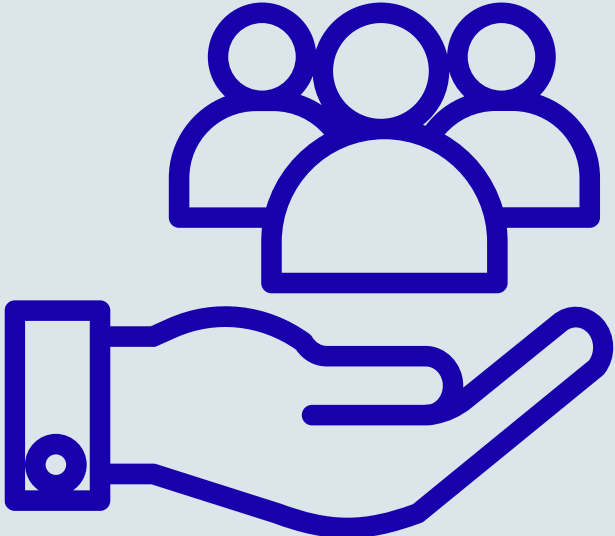
- Show Rate - 56%
- Scheduled - 1910
- Attended - 1074

## August 2024

- Show Rate - 53%
- Scheduled - 2032
- Attended - 1069

# *FY 2026 Camden One-Stop NJDOL UI Totals YTD*

*August 2025*



**Avg. Per Month**  
**1143**



**Customers Served**  
**2286**



**Avg. Show Rate**  
**59%**