



FY 2026

Camden One-Stop NJDOL

Employment Services & Unemployment

**Statistics, Charts & FY 2025 Comparisons*

YTD April 2026



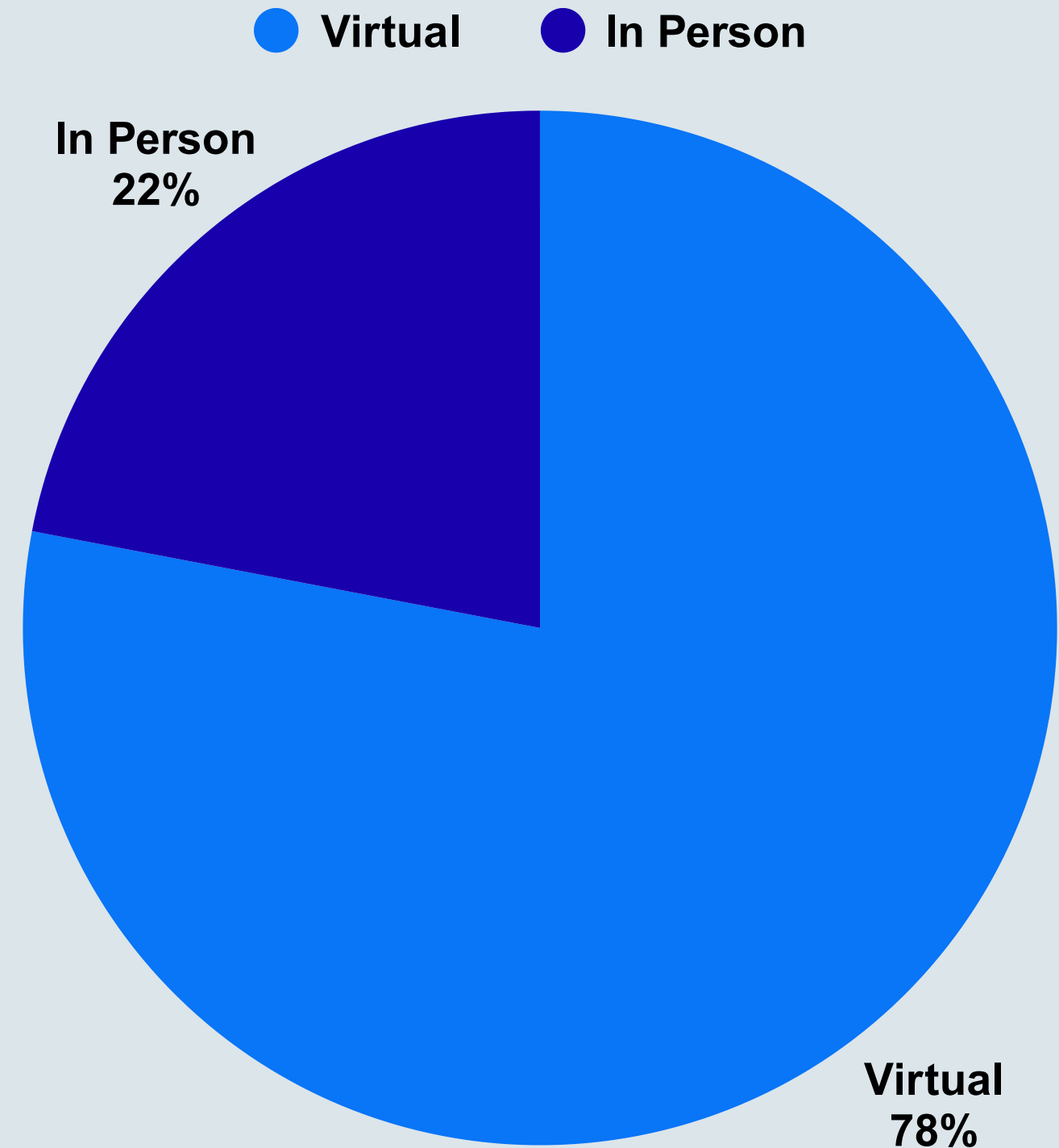
Total Customers
Served - 559

Virtually - 78% / 436

In Person - 22% / 123

Camden County One-Stop NJDOL ES

559 Customers Served - April 2026



Camden County One-Stop NJDOLE Hybrid ES Customers

**April 2026 Compared to
April 2025**

April 2026

- Total Customers - 559
- Virtual - 78% / 436
- In Person - 22% / 123

April 2025

- Total Customers - 633
- Virtual - 80% / 504
- In Person - 20% / 129

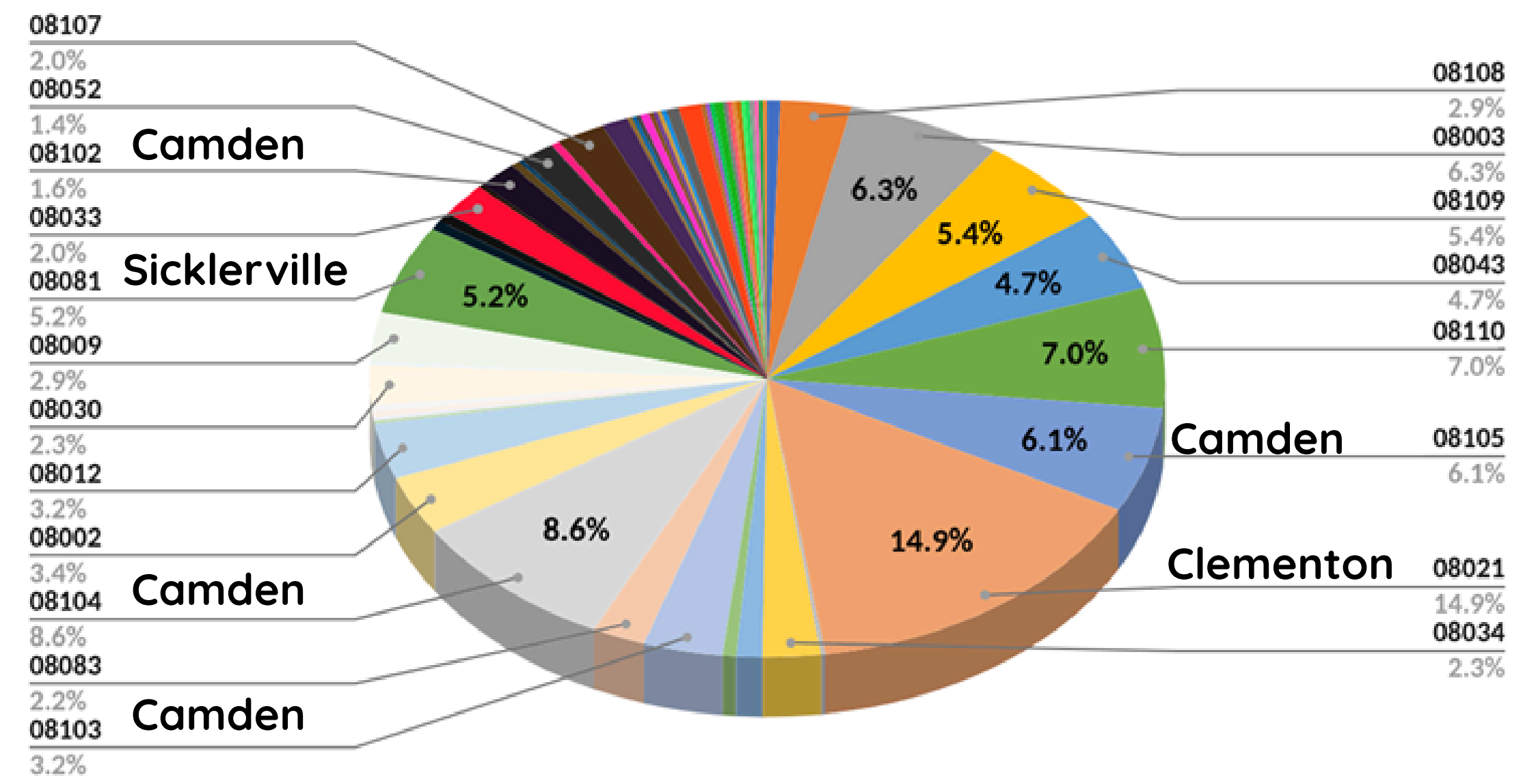
Total Hybrid
Customers Served - 559

Camden - 19.5% / 107

Clementon &
Sicklerville - 20.1% / 112

Camden County One-Stop NJDOL ES Customer Zip Codes - April 2026

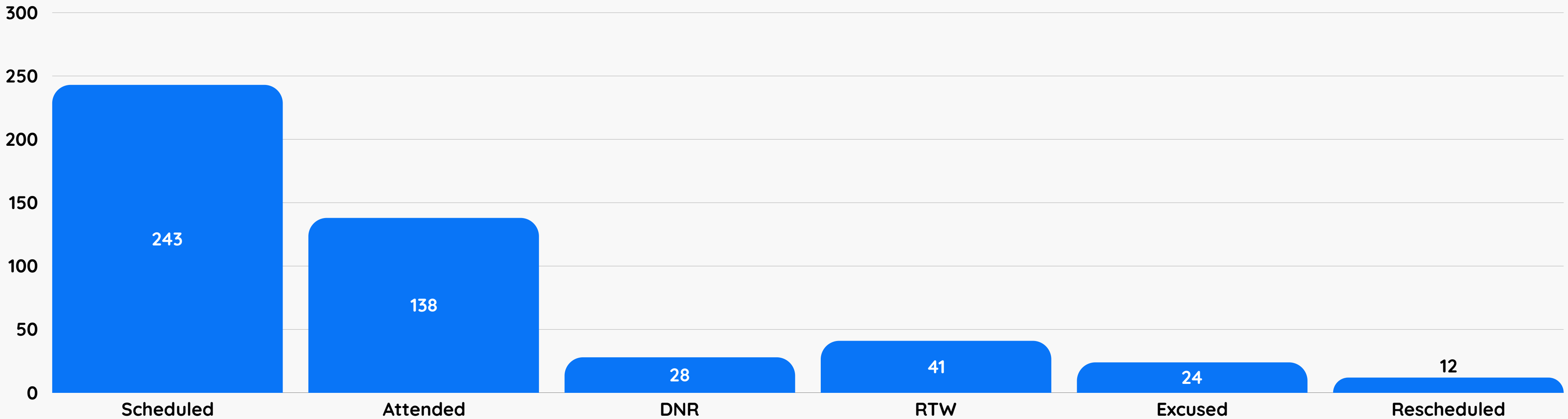
Camden County One-Stop NJDOL ES Customer Zip Codes - April 2026



RESEA Attendance Rate - 57% - April 2026



● RESEA



FY 2026 NJDOL ES Totals YTD - April 2026



**Avg. Customers
Per Month - 502**



**Customers
Served - 5082**



**Avg. Service Method
76% Virtually
24% In-Person**

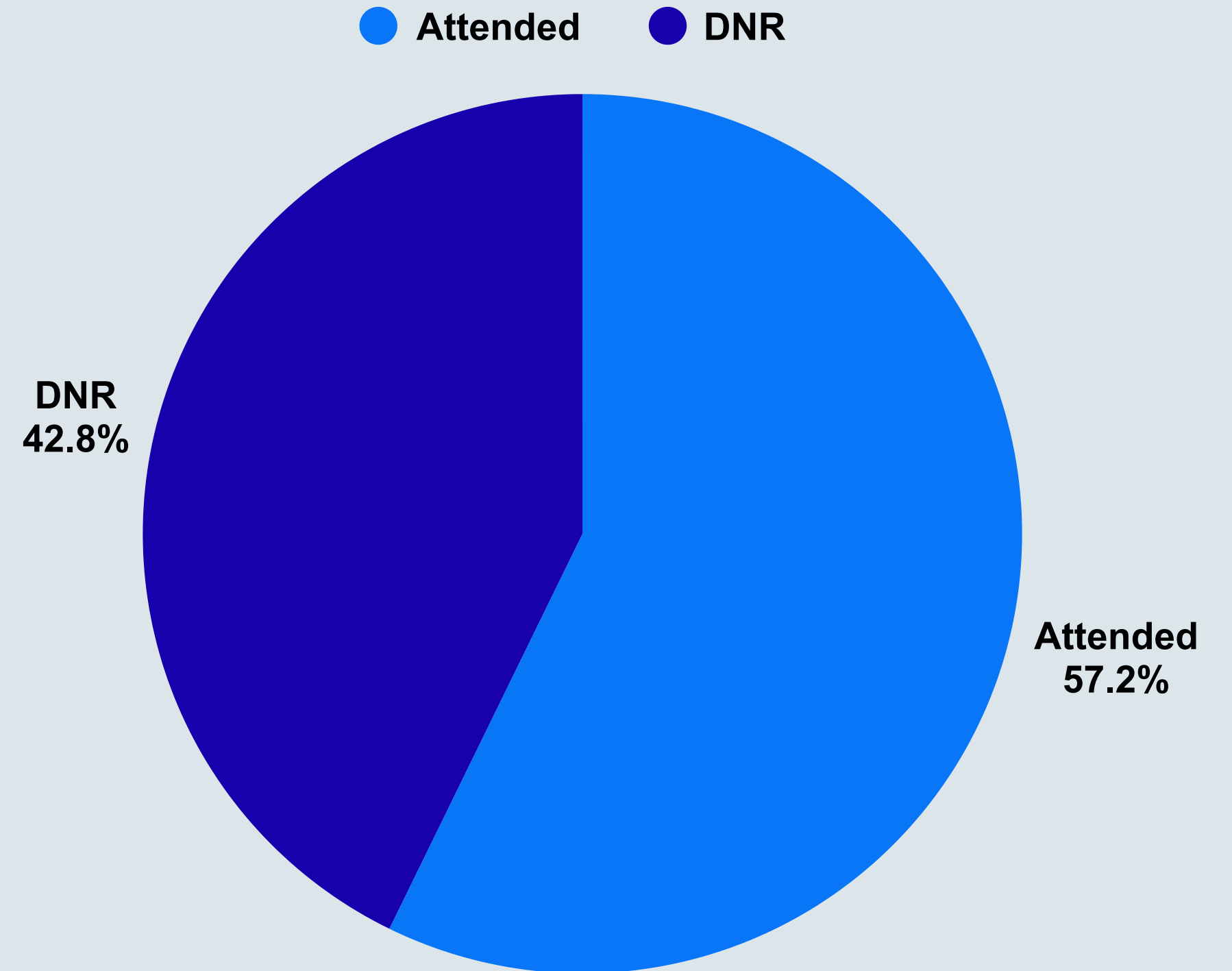
Total UI Customers
Scheduled - 2128

Attended - 57% / 1218

DNR - 43% / 910

Camden County One-Stop NJDOL UI

1218 Customers Served - April 2026



Camden County One-Stop NJDOL UI Onsite Customers Served

**April 2026 Compared to
April 2025**

April 2026

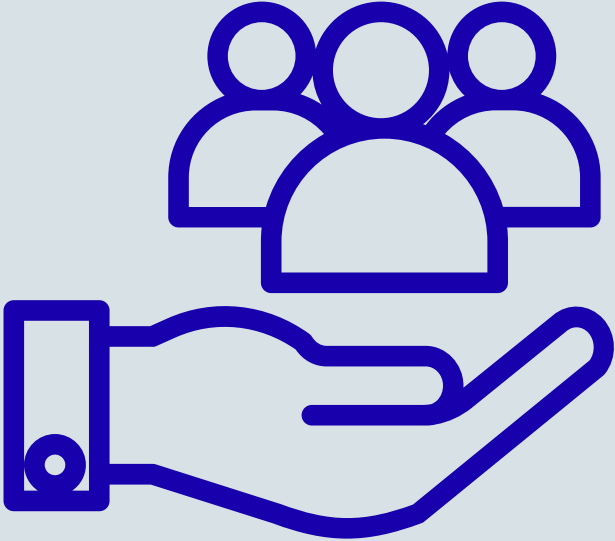
- Show Rate - 57%
- Scheduled - 2128
- Attended - 1218

April 2025

- Show Rate - 60%
- Scheduled - 1837
- Attended - 1109

FY 2026 Camden One-Stop NJDOL UI Totals YTD

April 2026



Avg. Per Month
1186



Customers Served
11,185



Avg. Show Rate
59%