



FY 2025
Camden NJDOL
Employment Services
and Unemployment

YTD March 2025
Statistics, Charts & FY 2024 Comparisons

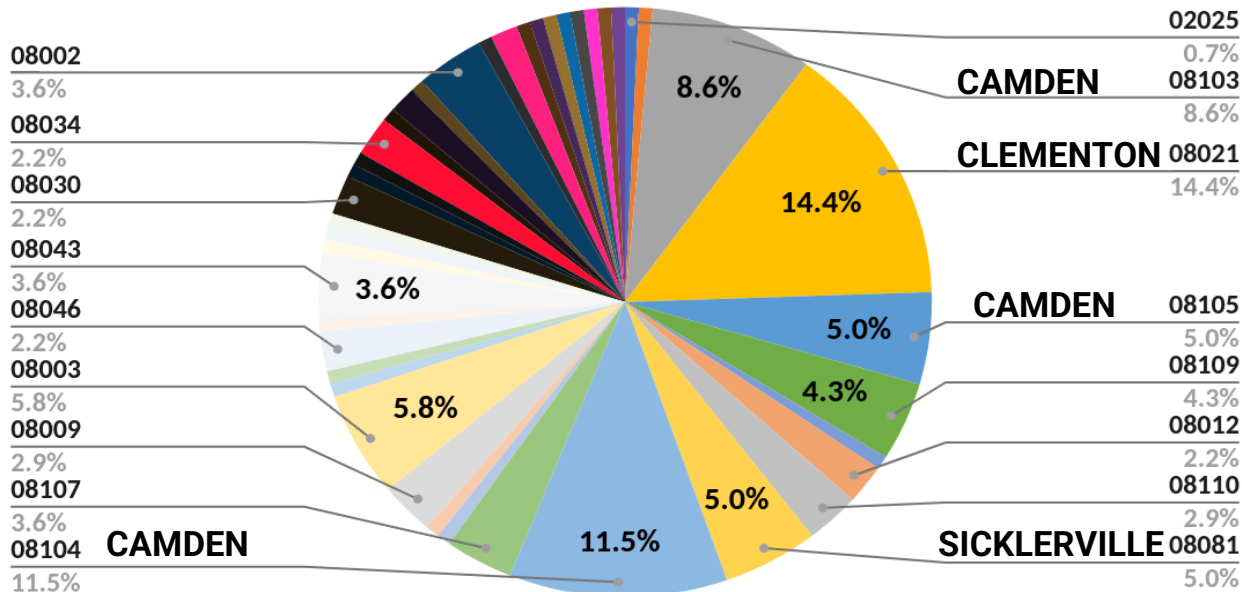


CAMDEN COUNTY ONE-STOP NJDOL ES ONSITE CUSTOMERS ZIP CODES

TOTAL CUSTOMERS SERVED - 134

CAMDEN – 25.8% / 35 SICKLERVILLE & CLEMENTON – 19.4% / 26

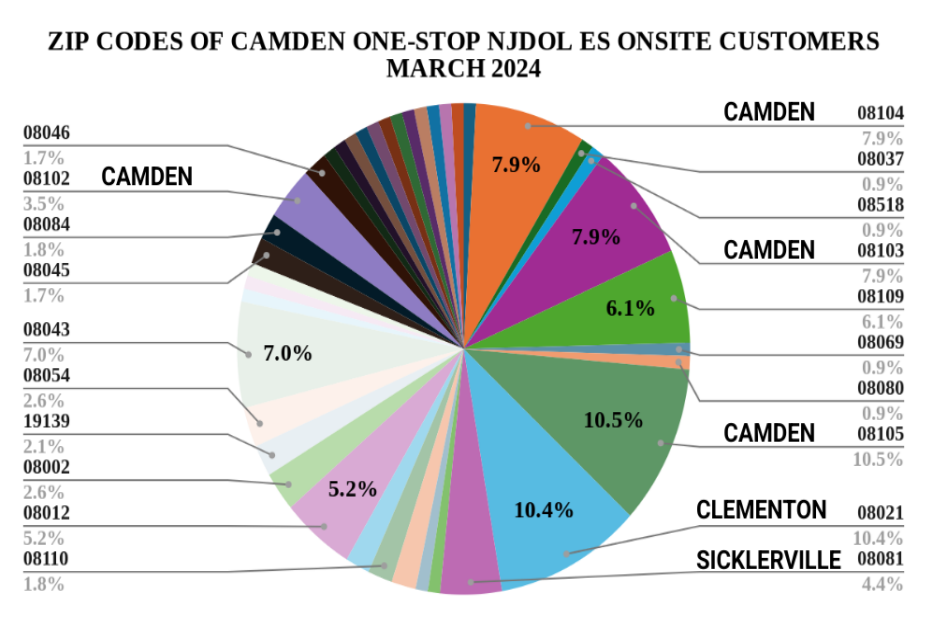
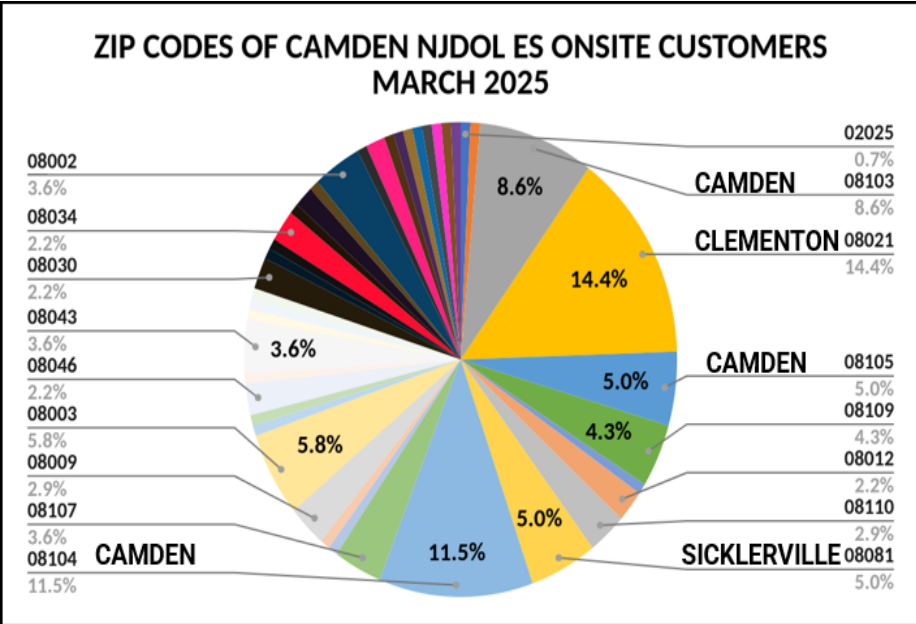
ZIP CODES OF CAMDEN NJDOL ES ONSITE CUSTOMERS MARCH 2025



CAMDEN COUNTY ONE-STOP NJDOL ES ONSITE CUSTOMERS ZIP CODES

MARCH 2025 - TOTAL CUSTOMERS - 134
CAMDEN – 25.8% / 35
CLEMENTON & SICKLERVILLE – 19.4% / 26

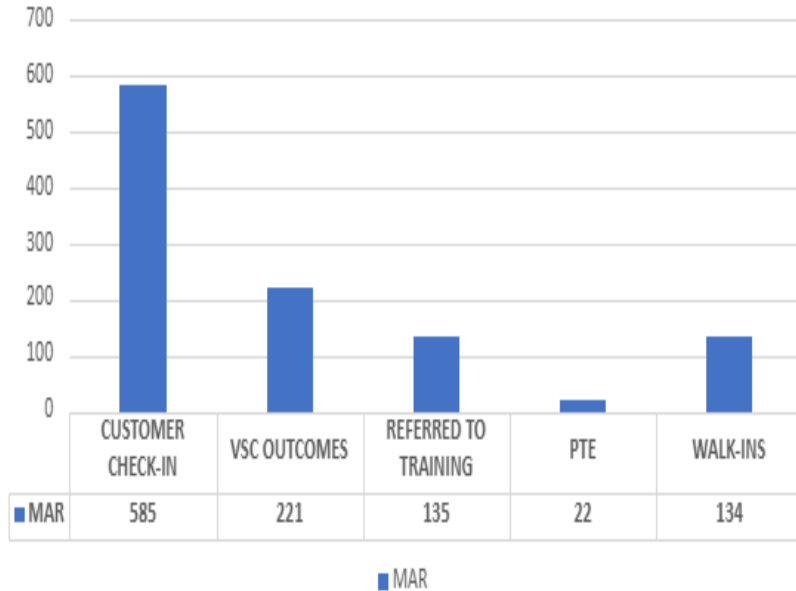
MARCH 2024 - TOTAL CUSTOMERS - 128
CAMDEN - 30% / 38
CLEMENTON & SICKLERVILLE -15% / 19



CAMDEN COUNTY ONE-STOP NJDOL ES HYBRID SERVICES

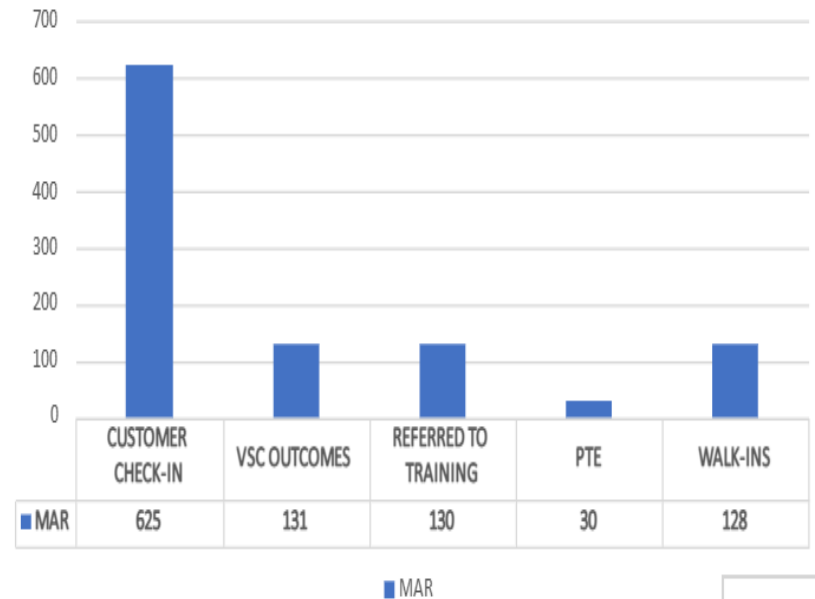
**MARCH 2025- 585 ES SERVICES DELIVERED
77% VIRTUALLY / 23% IN PERSON**

FY 2025 CAMDEN DOL EMPLOYMENT SERVICES



**MARCH 2024 - 625 ES SERVICES DELIVERED
80% VIRTUALLY / 20% IN PERSON**

FY 2024 CAMDEN DOL EMPLOYMENT SERVICES



KQC-NJDOL

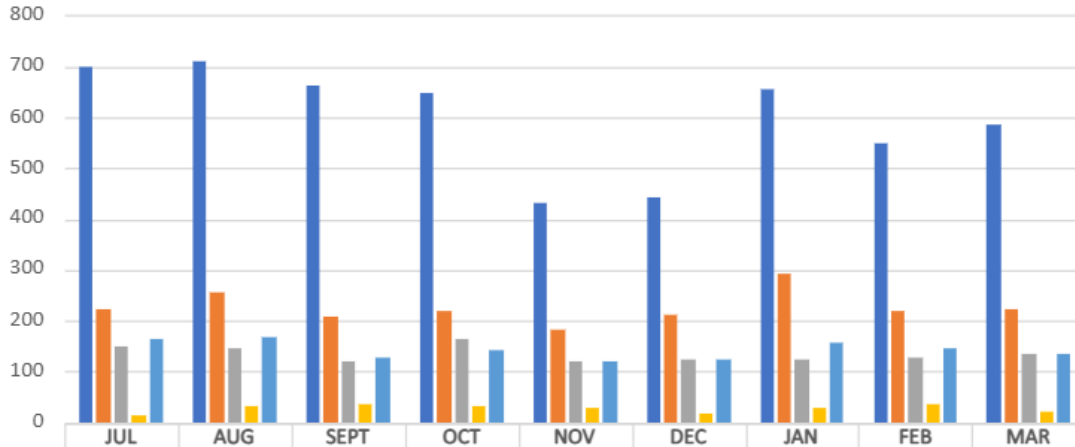
FY 2025 NJDOL ES TOTALS YTD - MARCH 2025

CUSTOMERS SERVED - 5381

AVERAGE CUSTOMERS PER MONTH - 598

AVERAGE OF PROVIDED SERVICES -76% VIRTUALLY / 24% IN PERSON

FY 2025 CAMDEN DOL EMPLOYMENT SERVICES



| | | | | | | | | | |
|------------------------|-----|-----|-----|-----|-----|-----|-----|-----|-----|
| ■ CUSTOMER CHECK-IN | 698 | 710 | 662 | 648 | 433 | 441 | 655 | 549 | 585 |
| ■ VSC OUTCOMES | 224 | 254 | 208 | 217 | 183 | 210 | 292 | 218 | 221 |
| ■ REFERRED TO TRAINING | 148 | 147 | 121 | 163 | 119 | 124 | 124 | 127 | 135 |
| ■ PTE | 14 | 33 | 37 | 33 | 27 | 16 | 27 | 36 | 22 |
| ■ WALK-INS | 165 | 167 | 126 | 141 | 118 | 122 | 156 | 147 | 134 |

■ CUSTOMER CHECK-IN ■ VSC OUTCOMES ■ REFERRED TO TRAINING ■ PTE ■ WALK-INS

KQC-NJDOL

YTD
VIRTUAL-76%
IN PERSON-24%

DEC
VIRTUAL-72%
IN PERSON-28%

JAN
VIRTUAL-76%
IN PERSON-24%

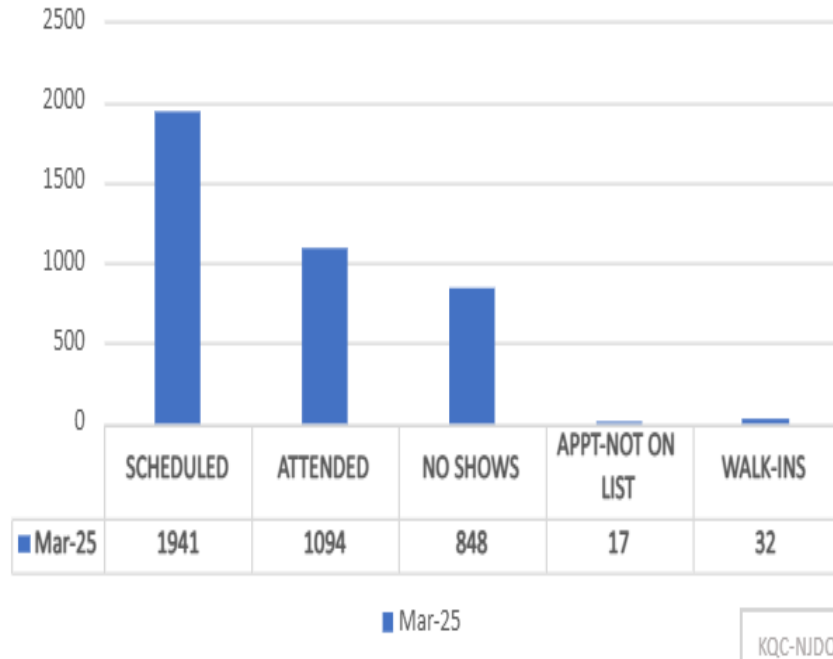
FEB
VIRTUAL-73%
IN PERSON-27%

MAR
VIRTUAL-77%
IN PERSON-23%

CAMDEN ONE-STOP ONSITE UI CUSTOMERS

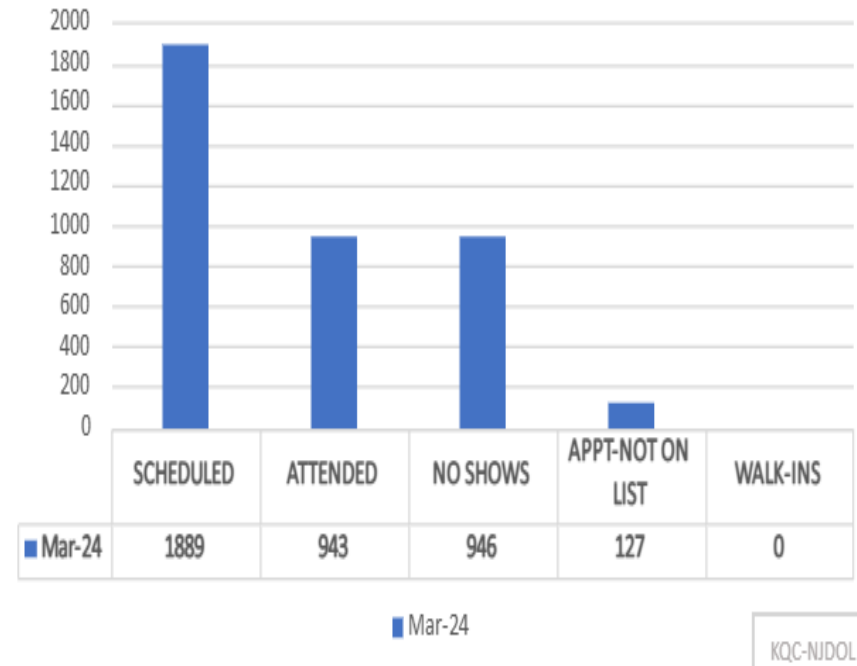
**MARCH 2025 - 56% SHOW RATE
TOTAL CUSTOMERS SERVED - 1094**

FY 2025 UI IN-PERSON APPOINTMENTS



**MARCH 2024 - 50% SHOW RATE
TOTAL CUSTOMERS SERVED - 943**

FY 2024 UI IN-PERSON APPOINTMENTS



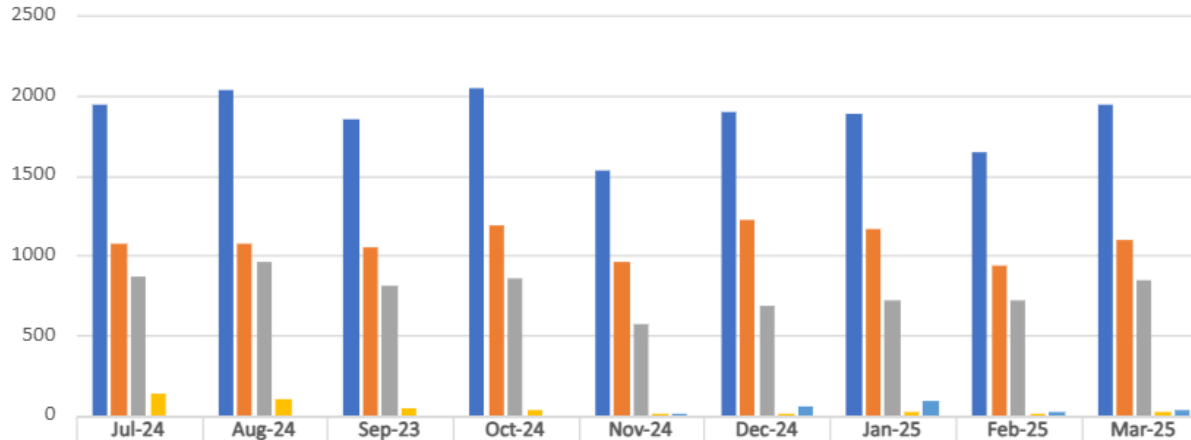
FY 2025 NJDOL UI TOTALS YTD - MARCH 2025

ONSITE CUSTOMERS SERVED - 9757

AVERAGE CUSTOMERS PER MONTH - 1084

AVERAGE SHOW RATE - 58%

FY 2025 UI IN-PERSON APPOINTMENTS



| | | | | | | | | | |
|--------------------|------|------|------|------|------|------|------|------|------|
| ■ SCHEDULED | 1942 | 2032 | 1856 | 2042 | 1531 | 1901 | 1889 | 1650 | 1941 |
| ■ ATTENDED | 1078 | 1069 | 1045 | 1191 | 962 | 1218 | 1169 | 931 | 1094 |
| ■ NO SHOWS | 864 | 963 | 811 | 851 | 569 | 683 | 720 | 719 | 847 |
| ■ APPT-NOT ON LIST | 132 | 99 | 44 | 36 | 7 | 6 | 14 | 13 | 17 |
| ■ WALK-INS | 0 | 0 | 0 | 0 | 1 | 53 | 92 | 21 | 32 |

■ SCHEDULED ■ ATTENDED ■ NO SHOWS ■ APPT-NOT ON LIST ■ WALK-INS

KQC-NJDOL

YTD
SHOW RATE-58%
DNR-42%

DEC
SHOW RATE-64%
DNR-36%

JAN
SHOW RATE-62%
DNR-38%

FEB
SHOW RATE-56%
DNR-44%

MAR
SHOW RATE-56%
DNR-44%