



FY 2025
Camden NJDOL
Employment Services
and Unemployment

YTD January 2024
Statistics, Charts & FY 2024 Comparisons

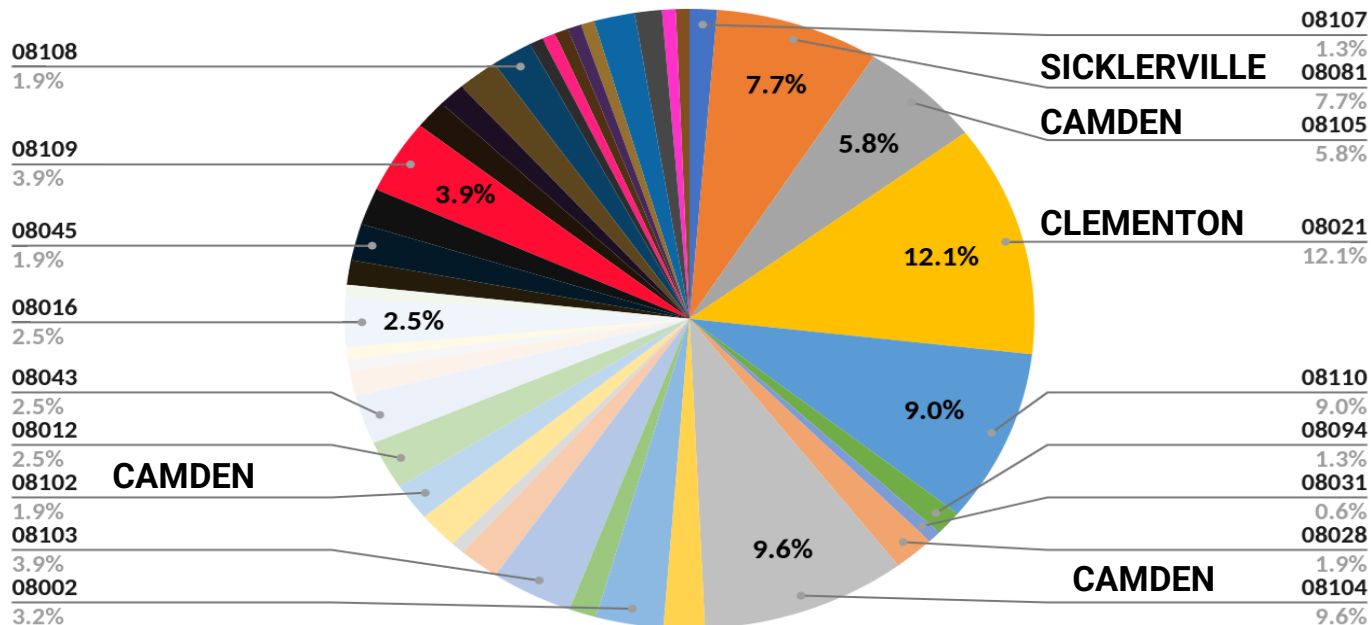


CAMDEN COUNTY ONE-STOP NJDOL ES ONSITE CUSTOMERS ZIP CODES

TOTAL CUSTOMERS SERVED - 156

CAMDEN - 21% / 33 SICKLERVILLE & CLEMENTON - 20% / 31

ZIP CODES OF CAMDEN NJDOL ES ONSITE CUSTOMERS
JANUARY 2025

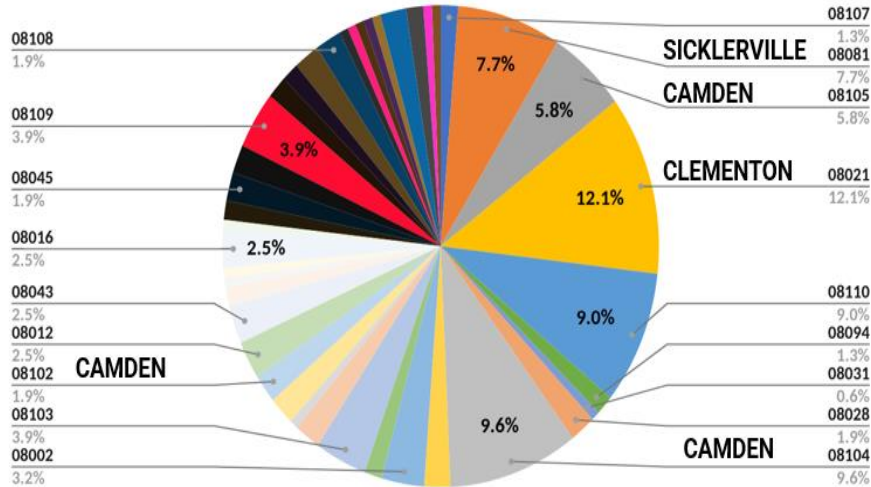


CAMDEN COUNTY ONE-STOP NJDOL ES ONSITE CUSTOMERS ZIP CODES

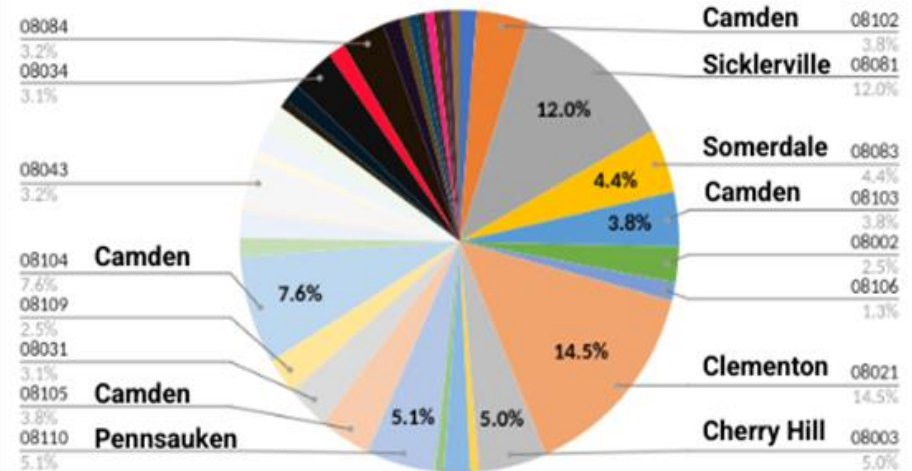
JANUARY 2025 - TOTAL CUSTOMERS - 156
CAMDEN - 21% / 33
CLEMENTON & SICKLERVILLE - 20% / 31

JANUARY 2024 - TOTAL CUSTOMERS - 158
CAMDEN - 19% / 30
CLEMENTON & SICKLERVILLE - 26.5% / 42

**ZIP CODES OF CAMDEN NJDOL ES ONSITE CUSTOMERS
 JANUARY 2025**



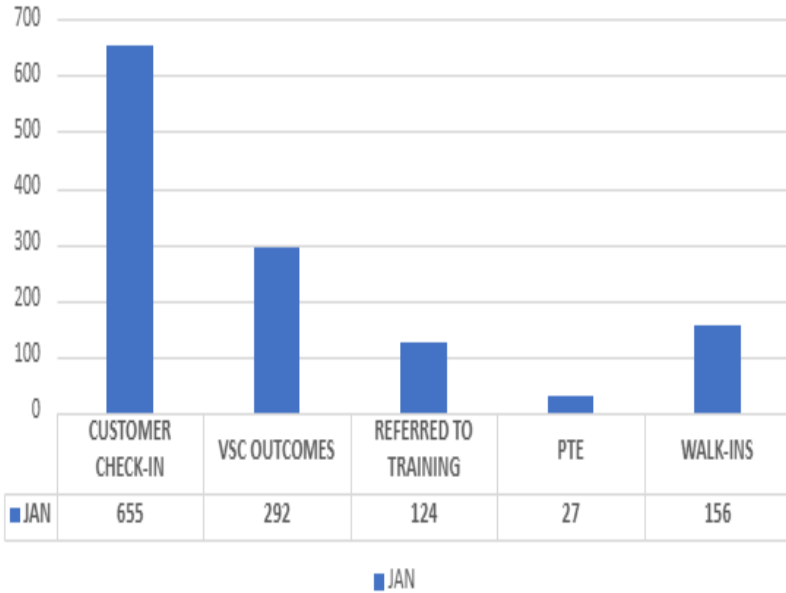
**ZIP CODES OF CAMDEN ONE-STOP NJOL ES ONSITE CUSTOMERS
 JANUARY 2024**



CAMDEN COUNTY ONE-STOP NJDOL ES HYBRID SERVICES

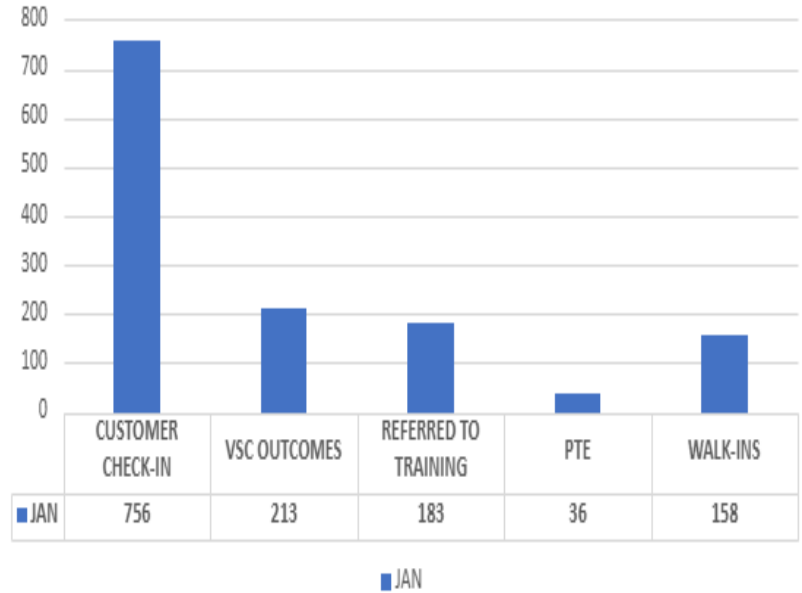
**JANUARY 2025- 655 ES SERVICES DELIVERED
76% VIRTUALLY / 24% IN PERSON**

CAMDEN 2025 CAMDEN DOL EMPLOYMENT SERVICES



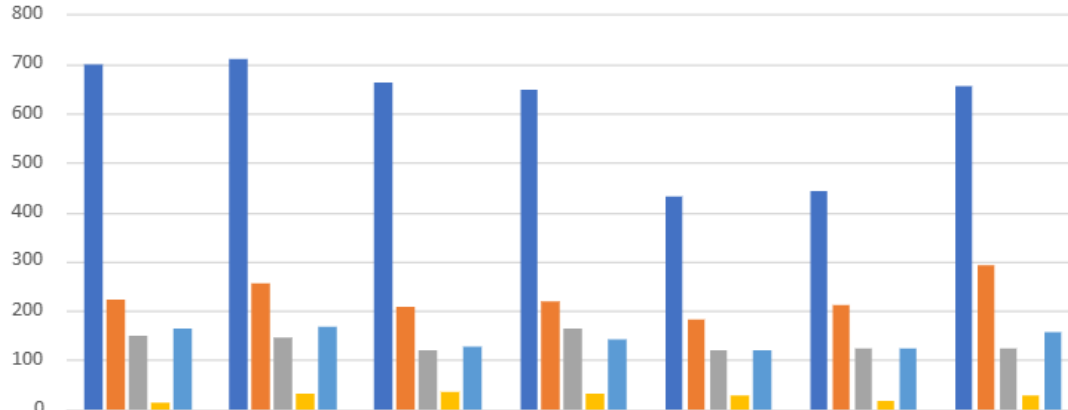
**JANUARY 2024 - 756 ES SERVICES DELIVERED
79% VIRTUALLY / 21% IN PERSON**

CAMDEN 2024 CAMDEN DOL EMPLOYMENT SERVICES



FY 2025 NJDOL ES TOTALS YTD - JANUARY 2025
CUSTOMERS SERVED - 4247
AVERAGE CUSTOMERS PER MONTH - 607
AVERAGE OF PROVIDED SERVICES -77% VIRTUALLY / 23% IN PERSON

FY 2025 CAMDEN DOL EMPLOYMENT SERVICES



	JUL	AUG	SEPT	OCT	NOV	DEC	JAN
CUSTOMER CHECK-IN	698	710	662	648	433	441	655
VSC OUTCOMES	224	254	208	217	183	210	292
REFERRED TO TRAINING	148	147	121	163	119	124	124
PTE	14	33	37	33	27	16	27
WALK-INS	165	167	126	141	118	122	156

■ CUSTOMER CHECK-IN
 ■ VSC OUTCOMES
 ■ REFERRED TO TRAINING
 ■ PTE
 ■ WALK-INS

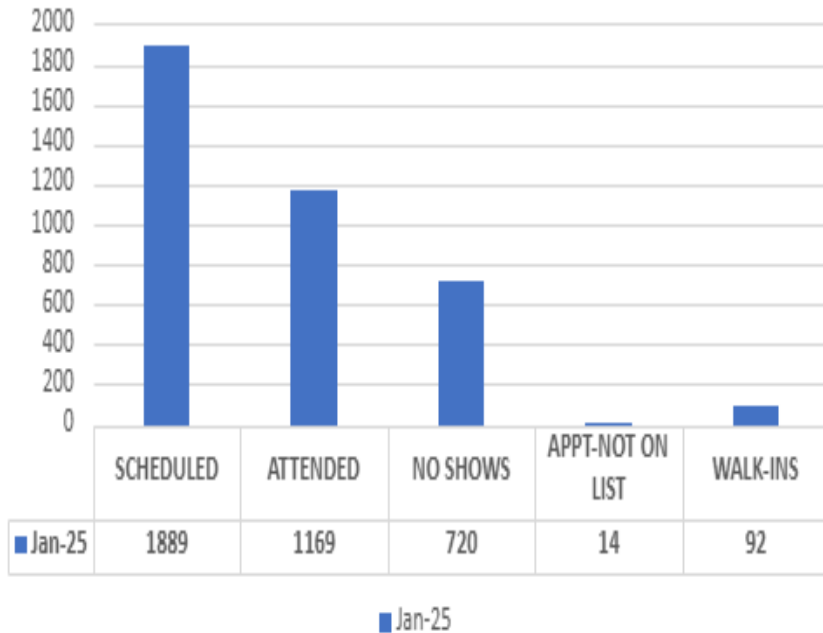
KQC-NJDOL

YTD	
VIRTUAL-77%	
IN PERSON-23%	
OCT	
VIRTUAL-78%	
IN PERSON-22%	
NOV	
VIRTUAL-73%	
IN PERSON-27%	
DEC	
VIRTUAL-72%	
IN PERSON-28%	
JAN	
VIRTUAL-76%	
IN PERSON-24%	

CAMDEN ONE-STOP ONSITE UI CUSTOMERS

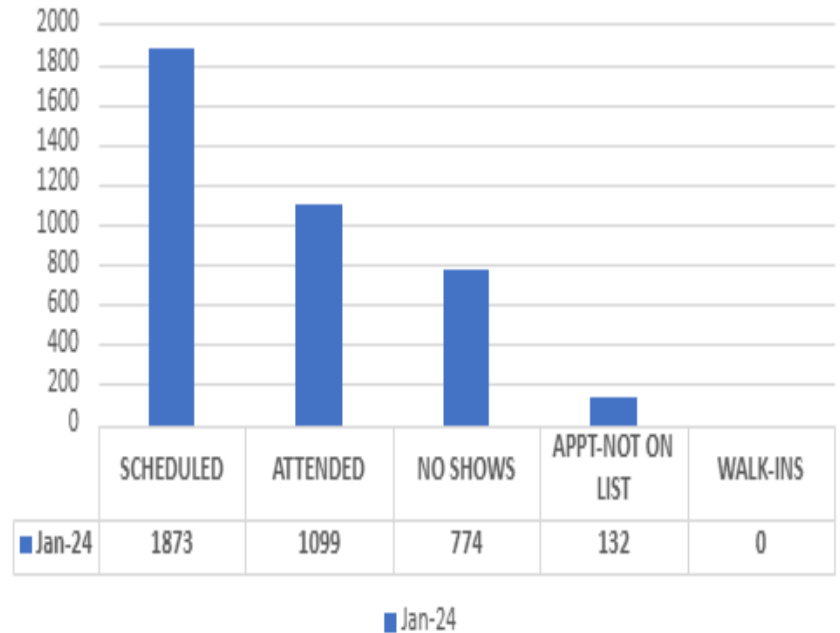
**JANUARY 2025-62% SHOW RATE
TOTAL CUSTOMERS SERVED - 1169**

FY 2025 UI IN-PERSON APPOINTMENTS



**JANUARY 2024-59% SHOW RATE
TOTAL CUSTOMERS SERVED - 1099**

FY 2024 UI IN-PERSON APPOINTMENTS



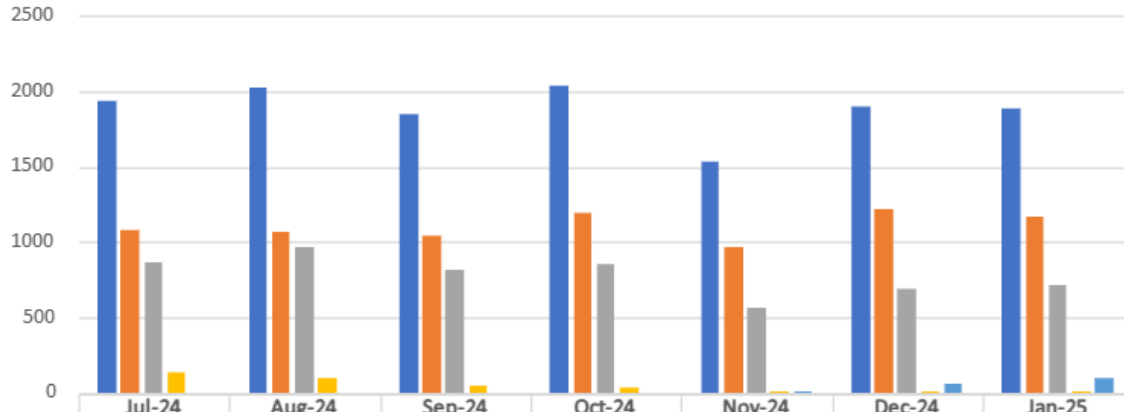
FY 2025 NJDOL UI TOTALS YTD - JANUARY 2025

ONSITE CUSTOMERS SERVED - 7732

AVERAGE CUSTOMERS PER MONTH - 1105

AVERAGE SHOW RATE - 59%

FY 2025 UI IN-PERSON APPOINTMENTS



■ SCHEDULED	1942	2032	1856	2042	1531	1901	1889
■ ATTENDED	1078	1069	1045	1191	962	1218	1169
■ NO SHOWS	864	963	811	851	569	683	720
■ APPT-NOT ON LIST	132	99	44	36	7	6	14
■ WALK-INS	0	0	0	0	1	53	92

■ SCHEDULED ■ ATTENDED ■ NO SHOWS ■ APPT-NOT ON LIST ■ WALK-INS

KQC-NJDOL

YTD

SHOW RATE-59%

DNR-41%

OCT

SHOW RATE-58%

DNR-42%

NOV

SHOW RATE-63%

DNR-37%

DEC

SHOW RATE-64%

DNR-36%

JAN

SHOW RATE-62%

DNR-38%