



FY 2025
Camden NJDOL
Employment Services
and Unemployment

December 2024
Statistics, Charts & FY 2024 Comparisons

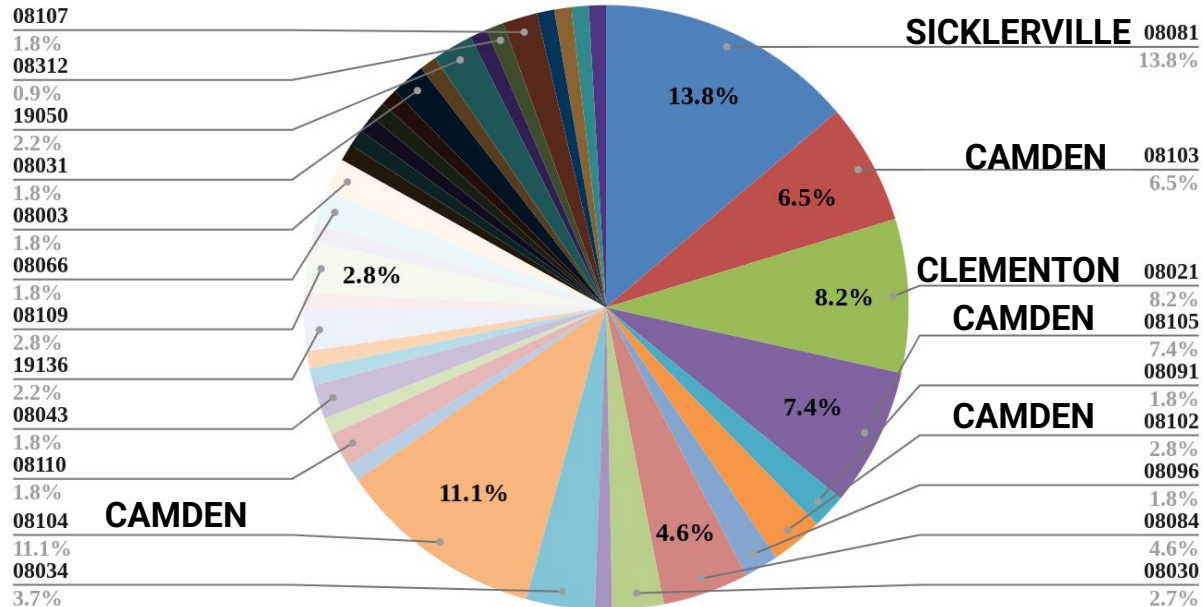


CAMDEN COUNTY ONE-STOP NJDOL ES ONSITE CUSTOMERS ZIP CODES

TOTAL CUSTOMERS SERVED - 122

CAMDEN - 28% / 34 SICKLERVILLE & CLEMENTON - 22% / 27

ZIP CODES OF CAMDEN ONE-STOP NJDOL ES ONSITE CUSTOMERS DECEMBER 2024

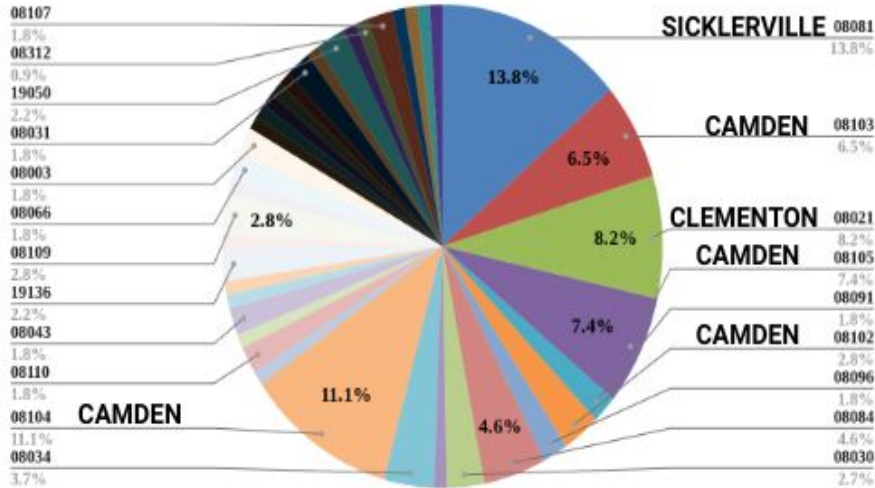


CAMDEN COUNTY ONE-STOP NJDOL ES ONSITE CUSTOMERS ZIP CODES

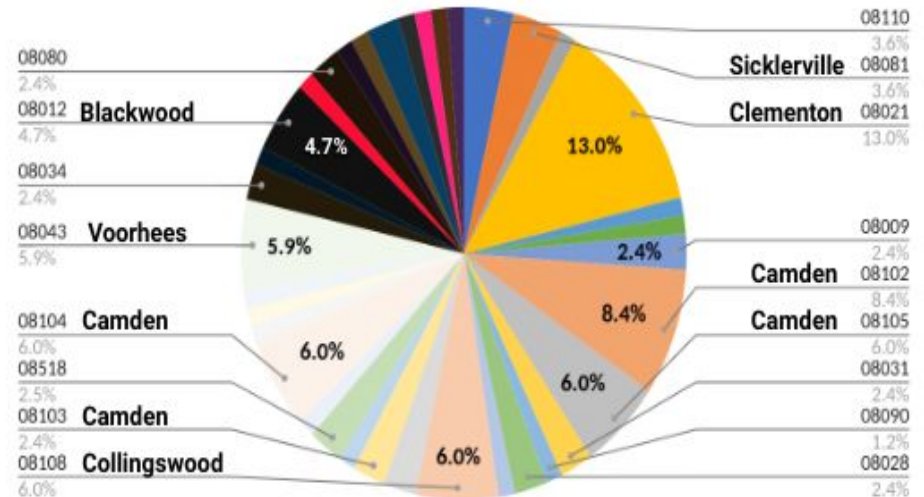
DECEMBER 2024 - TOTAL CUSTOMERS - 122
CAMDEN - 28% / 34
CLEMENTON & SICKLERVILLE - 22% / 27

DECEMBER 2023 - TOTAL CUSTOMERS - 84
CAMDEN - 23% / 19
CLEMENTON & SICKLERVILLE - 21% / 18

ZIP CODES OF CAMDEN ONE-STOP NJDOL ES ONSITE CUSTOMERS DECEMBER 2024



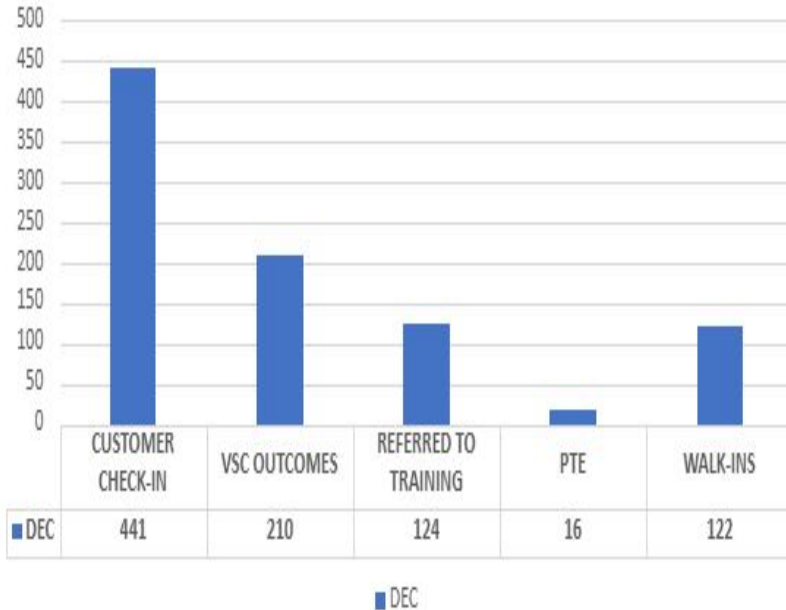
ZIP CODES OF CAMDEN ONE-STOP NJDOL ES ONSITE CUSTOMERS DECEMBER 2023



CAMDEN COUNTY ONE-STOP NJDOL ES HYBRID SERVICES

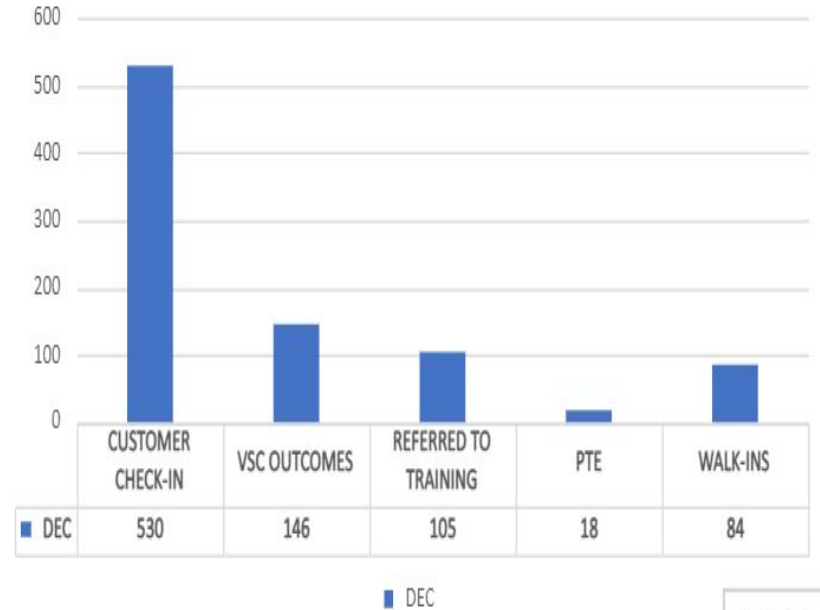
**DECEMBER 2024 - 441 ES SERVICES DELIVERED
72% VIRTUALLY / 28% IN PERSON**

FY 2025 CAMDEN DOL EMPLOYMENT SERVICES



**DECEMBER 2023-530 ES SERVICES DELIVERED
86% VIRTUALLY / 14% IN PERSON**

FY 2024 CAMDEN DOL EMPLOYMENT SERVICES



KQC-NJDOL

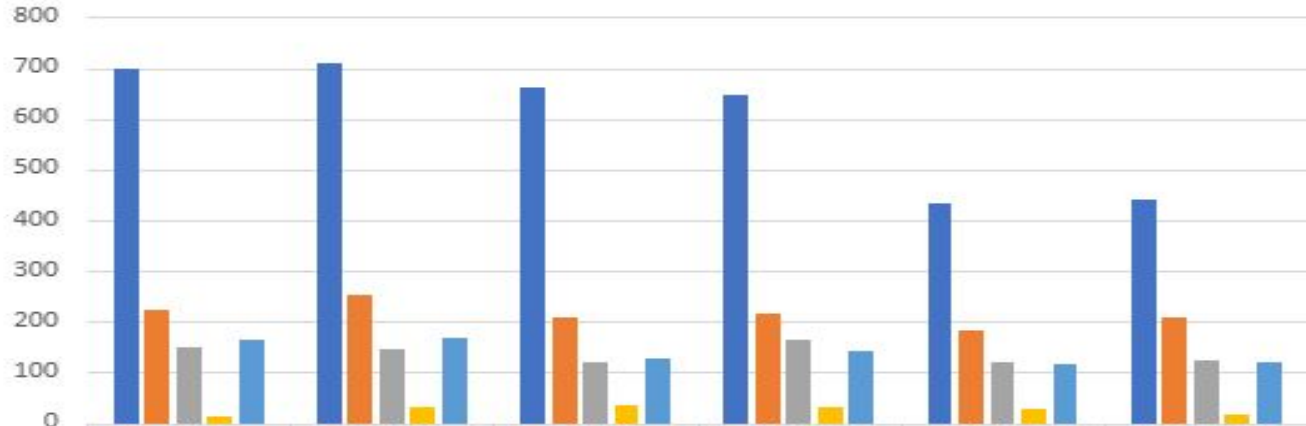
FY 2025 NJDOL ES TOTALS YTD - DECEMBER 2024

CUSTOMERS SERVED - 3592

AVERAGE CUSTOMERS PER MONTH - 599

AVERAGE OF PROVIDED SERVICES -77% VIRTUALLY / 23% IN PERSON

FY 2025 CAMDEN DOL EMPLOYMENT SERVICES



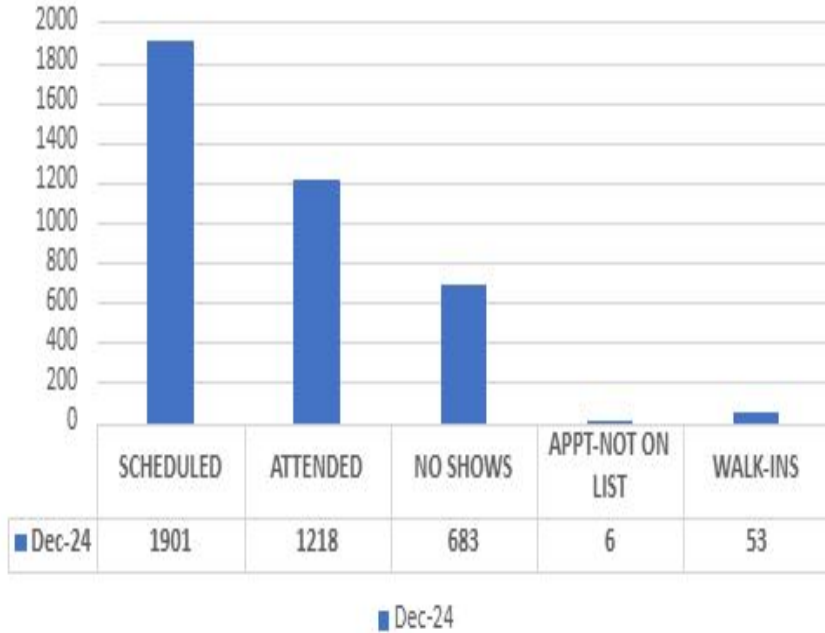
	JUL	AUG	SEPT	OCT	NOV	DEC
CUSTOMER CHECK-IN	698	710	662	648	433	441
VSC OUTCOMES	224	254	208	217	183	210
REFERRED TO TRAINING	148	147	121	163	119	124
PTE	14	33	37	33	27	16
WALK-INS	165	167	126	141	118	122

CUSTOMER CHECK-IN VSC OUTCOMES REFERRED TO TRAINING PTE WALK-INS

CAMDEN ONE-STOP ONSITE UI CUSTOMERS

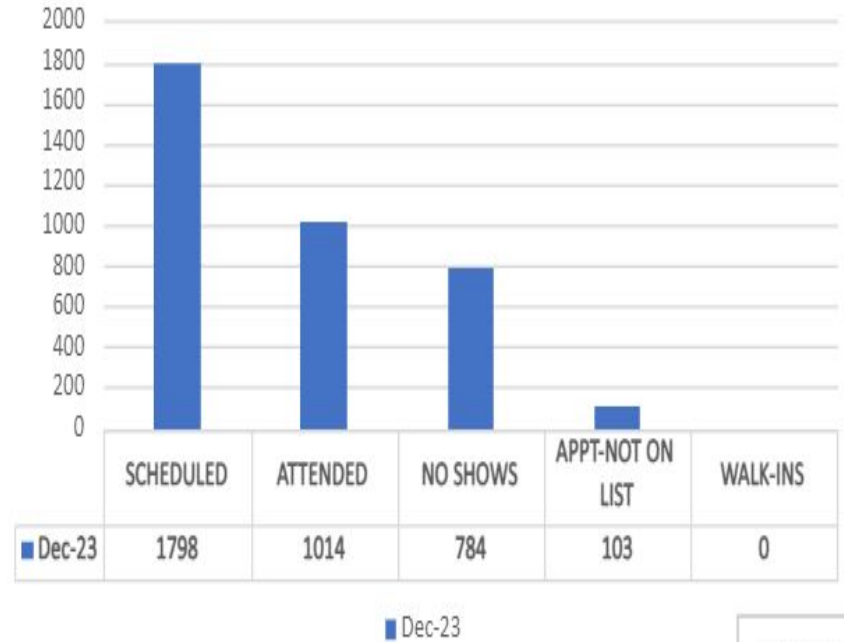
**DECEMBER 2024-64% SHOW RATE
TOTAL CUSTOMERS SERVED - 1218**

FY 2025 UI IN-PERSON APPOINTMENTS



**DECEMBER 2023-58% SHOW RATE
TOTAL CUSTOMERS SERVED - 1014**

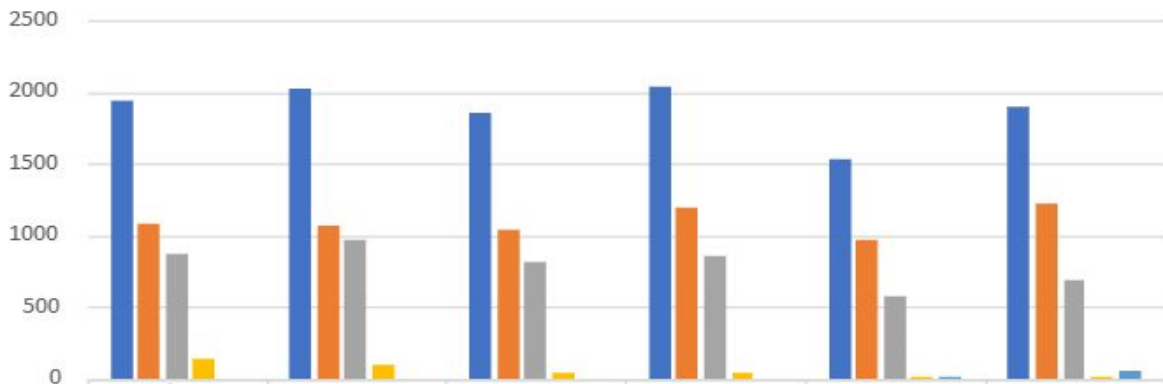
FY 2024 UI IN-PERSON APPOINTMENTS



KQC-NJDOL

FY 2025 NJDOL UI TOTALS YTD - DECEMBER 2024
ONSITE CUSTOMERS SERVED - 6563
AVERAGE CUSTOMERS PER MONTH - 1094
AVERAGE SHOW RATE - 58%

FY 2024 UI IN-PERSON APPOINTMENTS



■ SCHEDULED	1942	2032	1856	2042	1531	1901
■ ATTENDED	1078	1069	1045	1191	962	1218
■ NO SHOWS	864	963	811	851	569	683
■ APPT-NOT ON LIST	132	99	44	36	7	6
■ WALK-INS	0	0	0	0	1	53

■ SCHEDULED ■ ATTENDED ■ NO SHOWS ■ APPT-NOT ON LIST ■ WALK-INS

KQC-NJDOL

YTD	
SHOW RATE-58%	
DNR-42%	
SEP	
SHOW RATE-56%	
DNR-44%	
OCT	
SHOW RATE-58%	
DNR-42%	
NOV	
SHOW RATE-63%	
DNR-37%	
DEC	
SHOW RATE-64%	
DNR-36%	