





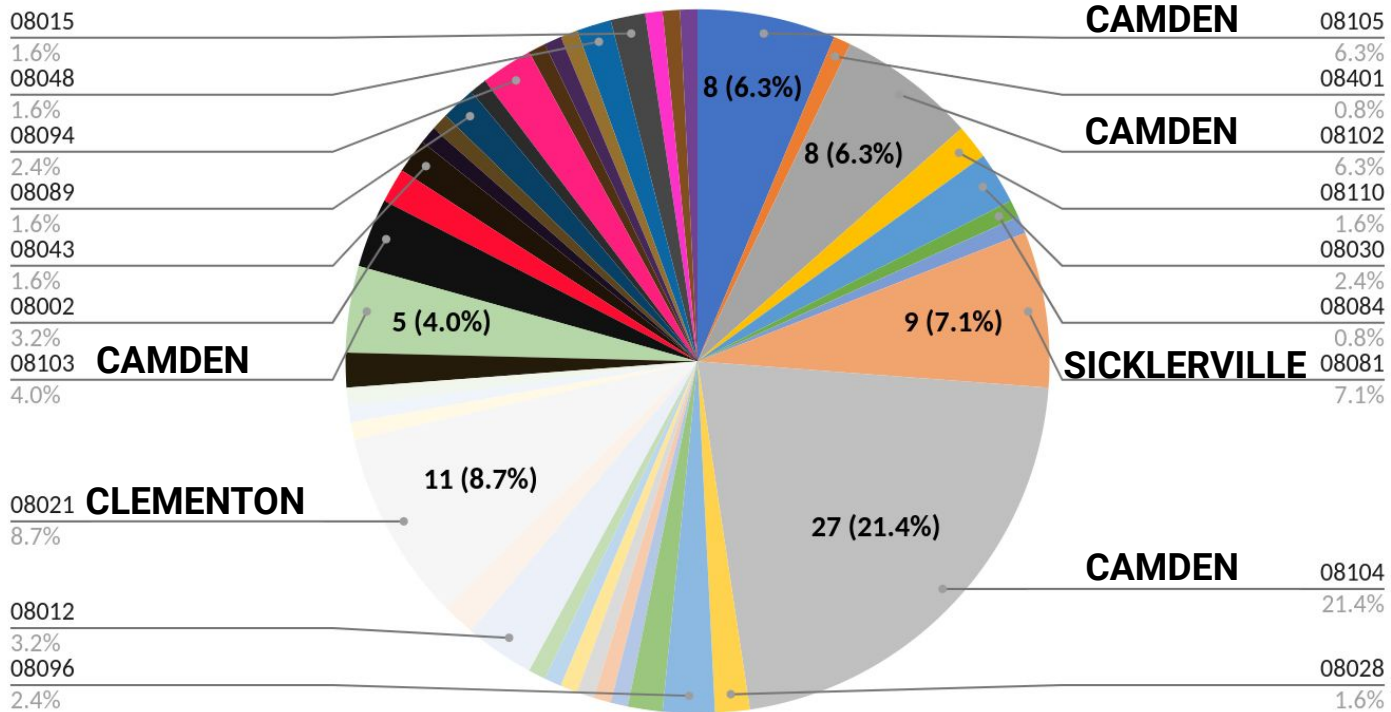
FY 2024
Camden NJDOL
Employment Services
and Unemployment



October 2023
Statistics and Charts

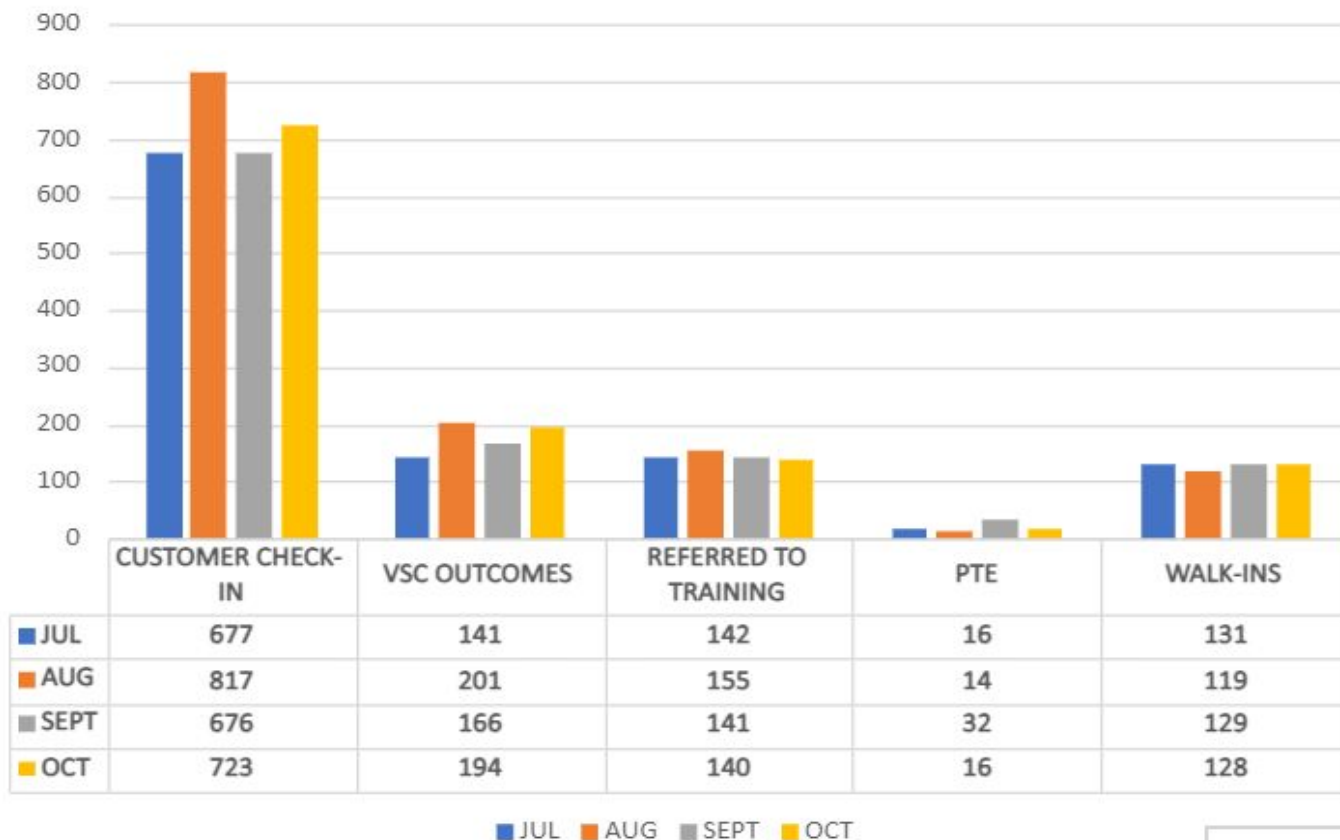


ZIP CODES OF CAMDEN ONE-STOP NJDOL ES ONSITE CUSTOMERS OCTOBER 2023



TOTAL CUSTOMERS-128 CAMDEN-38.8%/48 CLEMENTON & SICKLERVILLE-15.8%/20

FY 2024 CAMDEN DOL EMPLOYMENT SERVICES



KQC-NJDOL

YTD

VIRTUAL-82%

IN PERSON-18%

JUL

VIRTUAL-81%

IN PERSON-19%

AUG

VIRTUAL-85%

IN PERSON-15%

SEP

VIRTUAL-81%

IN PERSON-19%

OCT

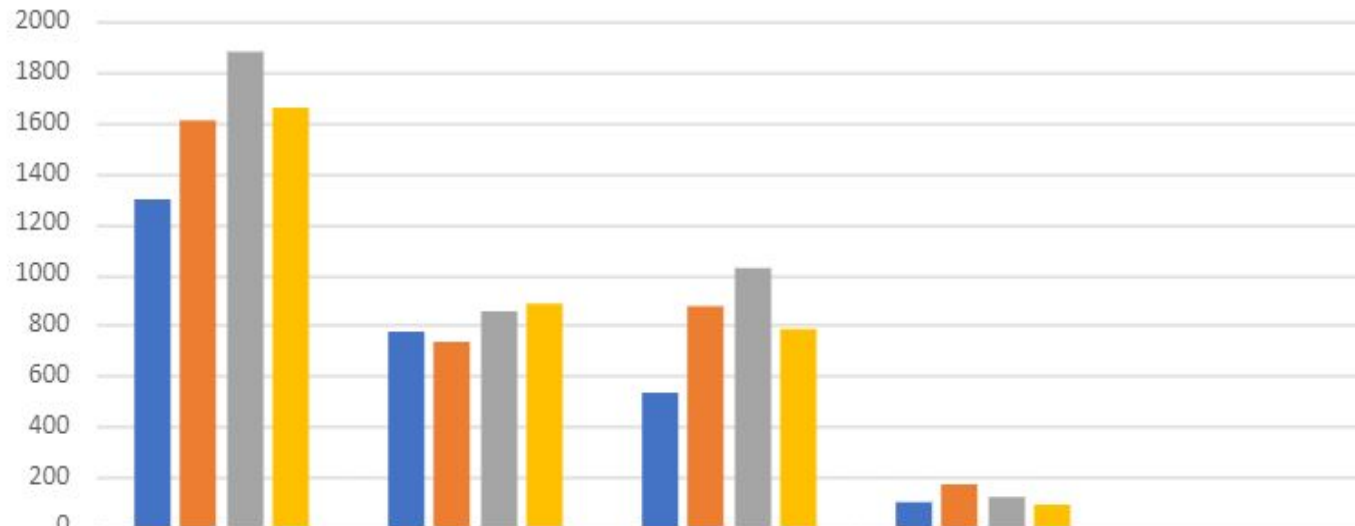
VIRTUAL-82%

IN PERSON-18%

Total ES Customer Check-ins=2893 Average Per Month=723

FY 2024 CAMDEN DOL EMPLOYMENT SERVICES					TOT-YTD	AVG
	JUL	AUG	SEPT	OCT		
CUSTOMER CHECK-IN	677	817	676	723	2893	723.3
VSC OUTCOMES	141	201	166	194	702	175.5
REFERRED TO TRAINING	142	155	141	140	578	144.5
PTE	16	14	32	16	78	19.5
WALK-INS	131	119	129	128	507	126.8

FY 2024 CAMDEN UI IN-PERSON APPOINTMENTS



	SCHEDULED	ATTENDED	NO SHOWS	APPT-NOT ON LIST	WALK-INS
JUL	1298	770	528	102	0
AUG	1614	737	877	173	0
SEP	1888	859	1029	117	0
OCT	1665	885	780	88	0

JUL AUG SEP OCT

KQC-NJDOL

YTD	
SHOW RATE-50%	
DNR-50%	
JUL	
SHOW RATE-59%	
DNR-41%	
AUG	
SHOW RATE-47%	
DNR-53%	
SEP	
SHOW RATE-45%	
DNR-55%	
OCT	
SHOW RATE-53%	
DNR-47%	

Total UI Onsite Customer Check-ins=3251 Average Per Month=813

FY 2024 CAMDEN UI IN-PERSON APPOINTMENTS						
					TOT	AVG
	Jul-23	Aug-23	Sep-23	Oct-23		
SCHEDULED	1298	1614	1888	1665	6465	1616.3
ATTENDED	770	737	859	885	3251	812.8
NO SHOWS	528	877	1029	780	3214	803.5
APPT-NOT ON LIST	102	173	117	88	480	120.0
WALK-INS	0	0	0	0	0	0.0