



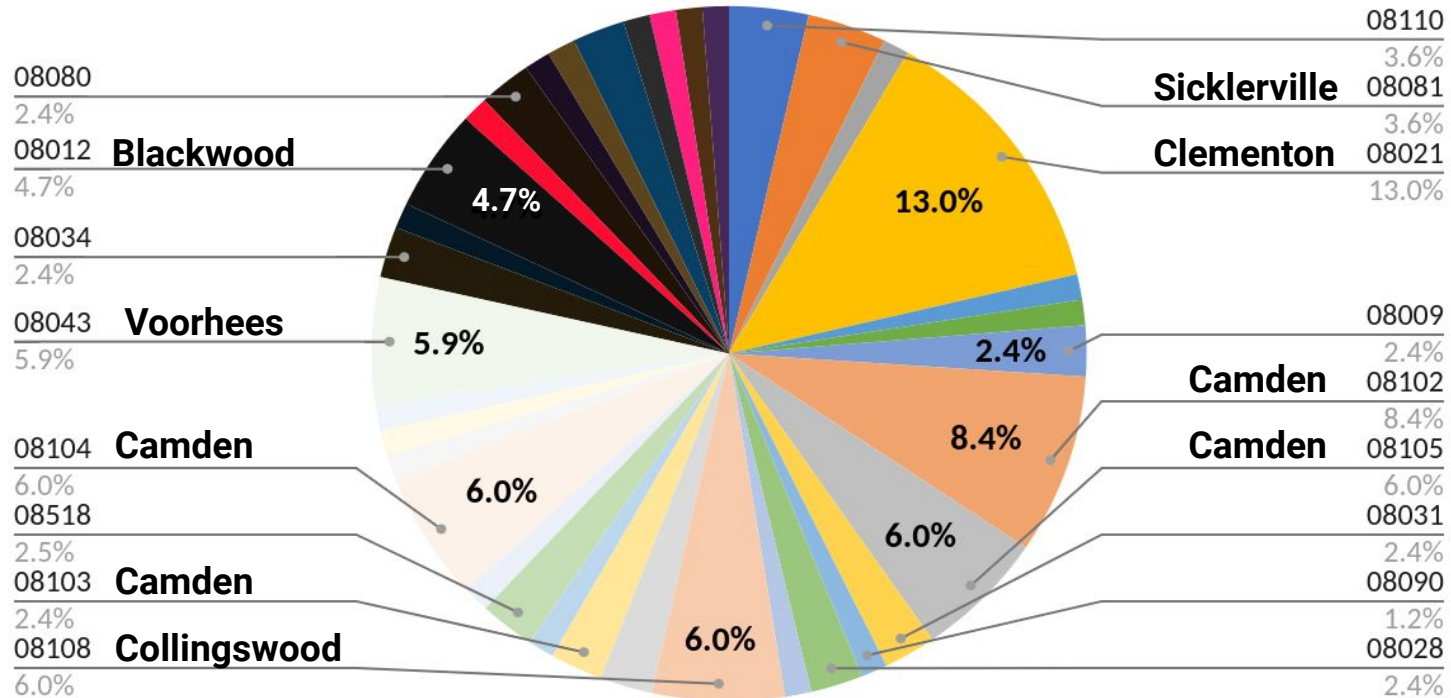
FY 2024
Camden NJDOL
Employment Services
and Unemployment



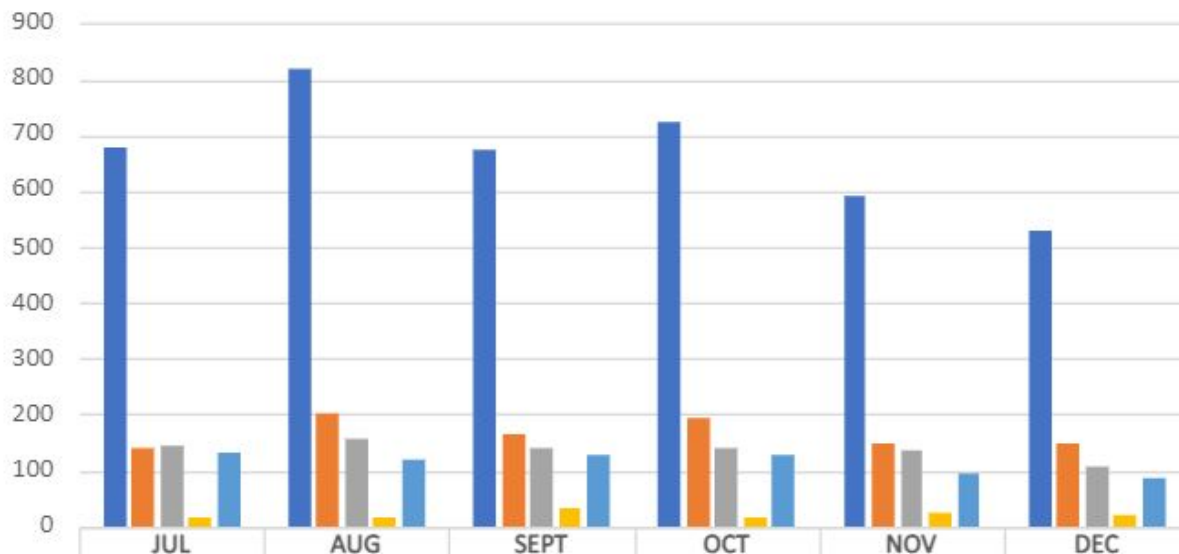
December 2023
Statistics and Charts



ZIP CODES OF CAMDEN ONE-STOP NJDOL ES ONSITE CUSTOMERS DECEMBER 2023



FY 2024 CAMDEN DOL EMPLOYMENT SERVICES



■ CUSTOMER CHECK-IN	677	817	676	723	590	530
■ VSC OUTCOMES	141	201	166	194	146	146
■ REFERRED TO TRAINING	142	155	141	140	134	105
■ PTE	16	14	32	16	22	18
■ WALK-INS	131	119	129	128	95	84

■ CUSTOMER CHECK-IN
 ■ VSC OUTCOMES
 ■ REFERRED TO TRAINING
 ■ PTE
 ■ WALK-INS

KQC-NJDOL

YTD
 VIRTUAL-83%
 IN PERSON-17%

SEP
 VIRTUAL-81%
 IN PERSON-19%

OCT
 VIRTUAL-82%
 IN PERSON-18%

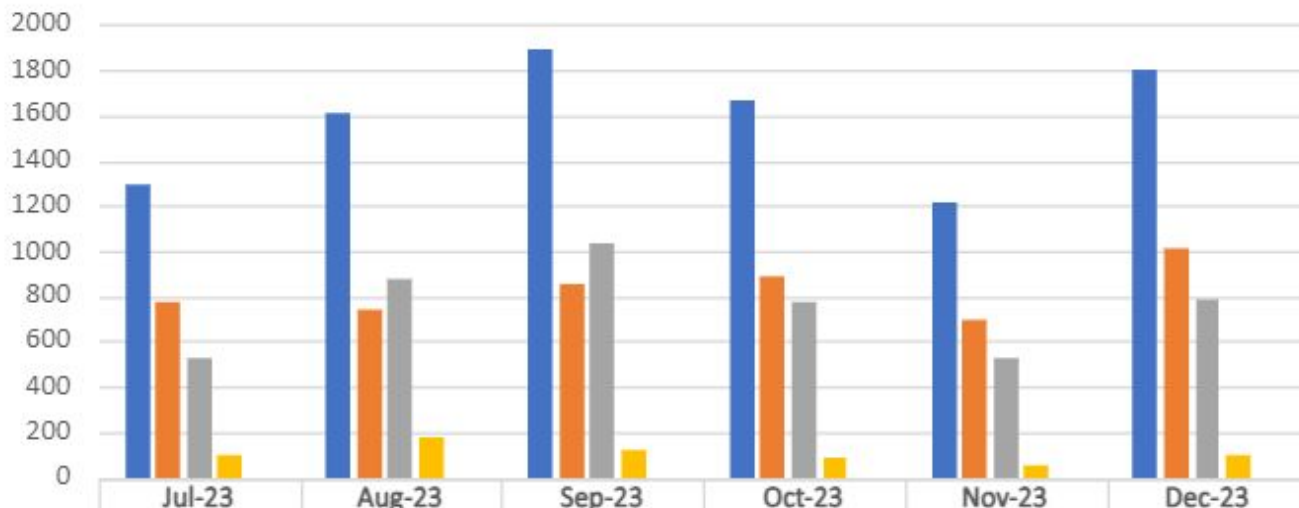
NOV
 VIRTUAL-84%
 IN PERSON-16%

DEC
 VIRTUAL-84%
 IN PERSON-16%

Total ES Customer Check-ins=4013 Average Per Month=669

FY 2024 CAMDEN DOL EMPLOYMENT SERVICES							TOT-YTD	AVG
	JUL	AUG	SEPT	OCT	NOV	DEC		
CUSTOMER CHECK-IN	677	817	676	723	590	530	4013	668.8
VSC OUTCOMES	141	201	166	194	146	146	994	165.7
REFERRED TO TRAINING	142	155	141	140	134	105	817	136.2
PTE	16	14	32	16	22	18	118	19.7
WALK-INS	131	119	129	128	95	84	686	114.3

FY 2024 UI IN-PERSON APPOINTMENTS



■ SCHEDULED	1298	1614	1888	1665	1220	1798
■ ATTENDED	770	737	859	885	694	1014
■ NO SHOWS	528	877	1029	780	526	784
■ APPT-NOT ON LIST	102	173	117	88	58	103
■ WALK-INS	0	0	0	0	0	0

■ SCHEDULED
 ■ ATTENDED
 ■ NO SHOWS
 ■ APPT-NOT ON LIST
 ■ WALK-INS

KQC-NJDOL

YTD	
SHOW RATE-52%	
DNR-48%	
SEP	
SHOW RATE-45%	
DNR-55%	
OCT	
SHOW RATE-53%	
DNR-47%	
NOV	
SHOW RATE-58%	
DNR-42%	
DEC	
SHOW RATE-56%	
DNR-44%	

Total UI Onsite Customer Check-ins=4959 Average Per Month=827

FY 2024 CAMDEN UI IN-PERSON APPOINTMENTS							TOT	AVG
	Jul-23	Aug-23	Sep-23	Oct-23	Nov-23	Dec-23		
SCHEDULED	1298	1614	1888	1665	1220	1798	9483	1580.5
ATTENDED	770	737	859	885	694	1014	4959	826.5
NO SHOWS	528	877	1029	780	526	784	4524	754.0
APPT-NOT ON LIST	102	173	117	88	58	103	641	106.8
WALK-INS	0	0	0	0	0	0	0	0.0