





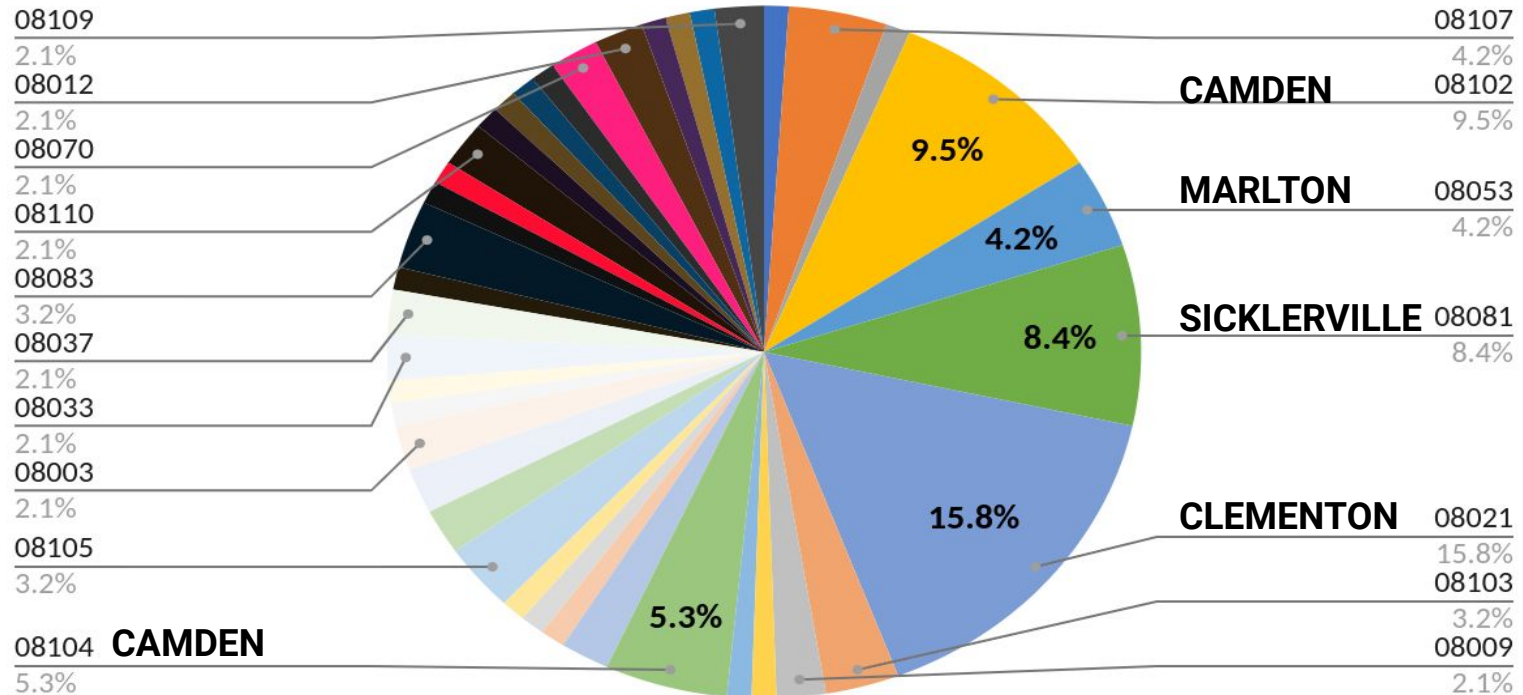
FY 2024
Camden NJDOL
Employment Services
and Unemployment



November 2023
Statistics and Charts

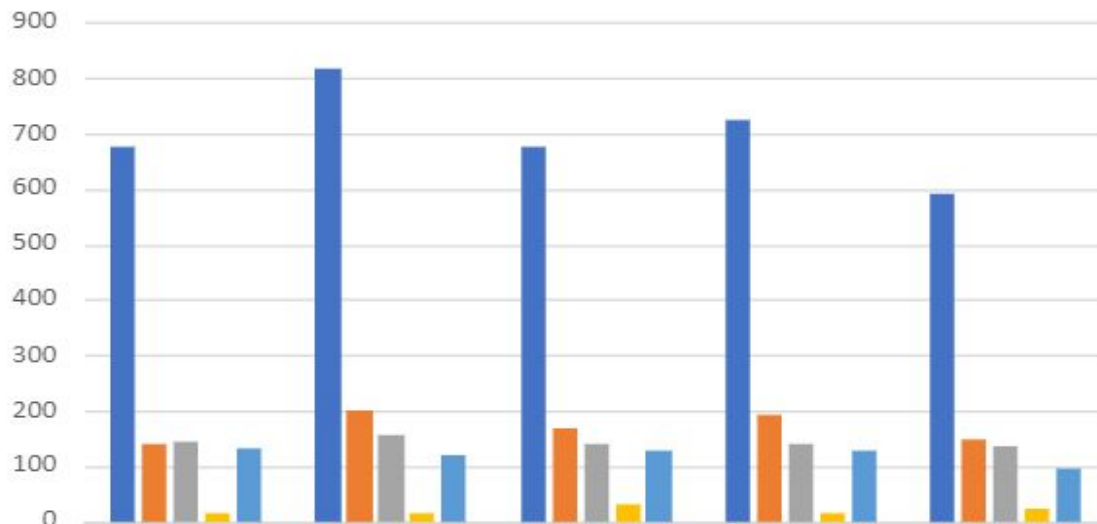


ZIP CODES OF CAMDEN ONE-STOP NJOL ES ONSITE CUSTOMERS NOVEMBER 2023



TOTAL CUSTOMERS-95 CAMDEN-21.2%/20 CLEMENTON & SICKLERVILLE-24.2%/23

FY 2024 CAMDEN DOL EMPLOYMENT SERVICES



YTD
VIRTUAL-83%
IN PERSON-17%

AUG
VIRTUAL-85%
IN PERSON-15%

SEP
VIRTUAL-81%
IN PERSON-19%

OCT
VIRTUAL-82%
IN PERSON-18%

NOV
VIRTUAL-84%
IN PERSON-16%

■ CUSTOMER CHECK-IN	677	817	676	723	590
■ VSC OUTCOMES	141	201	166	194	146
■ REFERRED TO TRAINING	142	155	141	140	134
■ PTE	16	14	32	16	22
■ WALK-INS	131	119	129	128	95

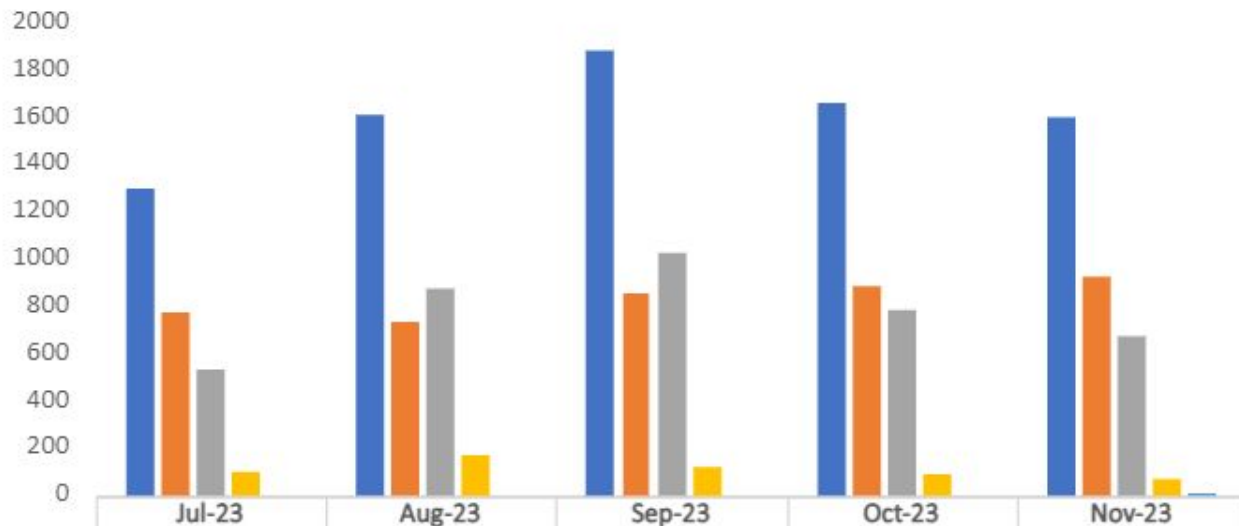
■ CUSTOMER CHECK-IN
 ■ VSC OUTCOMES
 ■ REFERRED TO TRAINING
 ■ PTE
 ■ WALK-INS

KQC-NJDOL

Total ES Customer Check-ins=3483 Average Per Month=697

FY 2024 CAMDEN DOL EMPLOYMENT SERVICES						TOT-YTD	AVG
	JUL	AUG	SEPT	OCT	NOV		
CUSTOMER CHECK-IN	677	817	676	723	590	3483	696.6
VSC OUTCOMES	141	201	166	194	146	848	169.6
REFERRED TO TRAINING	142	155	141	140	134	712	142.4
PTE	16	14	32	16	22	100	20.0
WALK-INS	131	119	129	128	95	602	120.4

FY 2024 UI IN-PERSON APPOINTMENTS



■ SCHEDULED	1298	1614	1888	1665	1598
■ ATTENDED	770	737	859	885	925
■ NO SHOWS	528	877	1029	780	673
■ APPT-NOT ON LIST	102	173	117	88	64
■ WALK-INS	0	0	0	0	10

■ SCHEDULED ■ ATTENDED ■ NO SHOWS ■ APPT-NOT ON LIST ■ WALK-INS

KQC-NJDOL

YTD
SHOW RATE-52%

DNR-48%

AUG

SHOW RATE-47%

DNR-53%

SEP

SHOW RATE-45%

DNR-55%

OCT

SHOW RATE-53%

DNR-47%

NOV

SHOW RATE-58%

DNR-42%

Total UI Onsite Customer Check-ins=4176 Average Per Month=835

FY 2024 CAMDEN UI IN-PERSON APPOINTMENTS								
							TOT	AVG
	Jul-23	Aug-23	Sep-23	Oct-23	Nov-23			
SCHEDULED	1298	1614	1888	1665	1598		8063	1612.6
ATTENDED	770	737	859	885	925		4176	835.2
NO SHOWS	528	877	1029	780	673		3887	777.4
APPT-NOT ON LIST	102	173	117	88	64		544	108.8
WALK-INS	0	0	0	0	10		10	2.0