

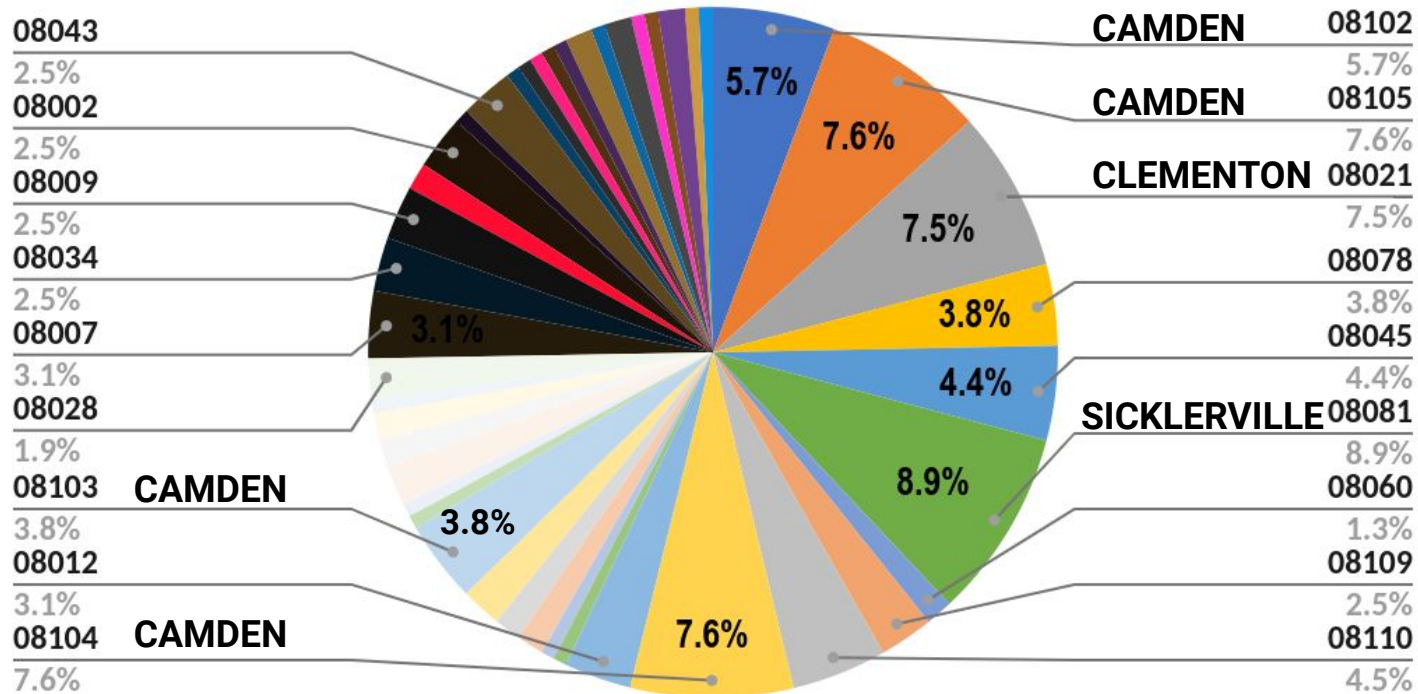


FY 2024
Camden NJDOL
Employment Services
and Unemployment

April 2024
Statistics and Charts

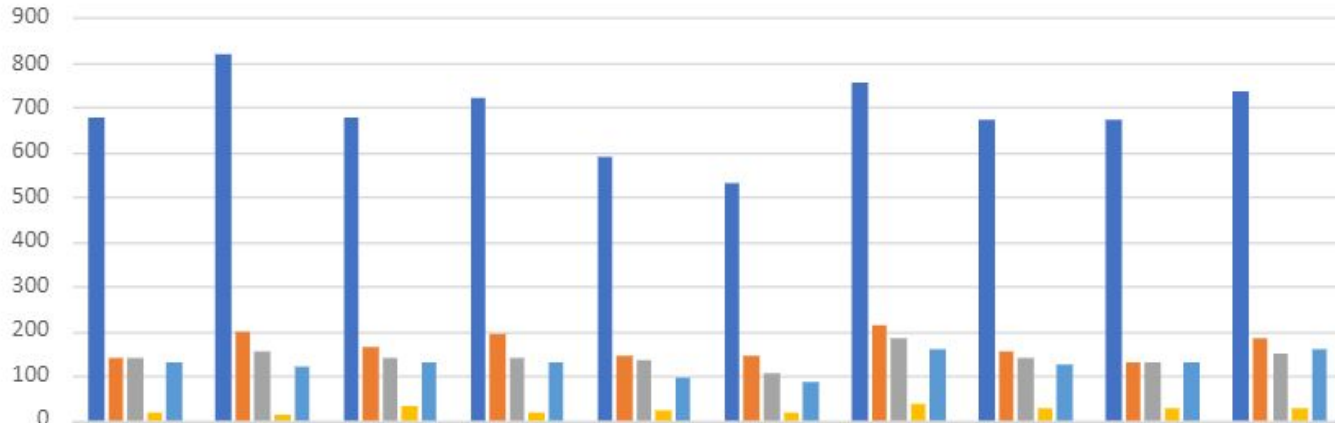


ZIP CODES OF CAMDEN ONE-STOP NJDOL ES ONSITE CUSTOMERS APRIL 2024



APRIL 2024 TOTAL ES SERVICES DELIVERED-78 %VIRTUALLY/22% IN PERSON YTD 2024 TOTAL ES SERVICES DELIVERED-82%VIRTUALLY/18% IN PERSON

FY 2024 CAMDEN DOL EMPLOYMENT SERVICES



■ CUSTOMER CHECK-IN	677	817	676	723	590	530	756	675	675	736
■ VSC OUTCOMES	141	201	166	194	146	146	213	157	131	182
■ REFERRED TO TRAINING	142	155	141	140	134	105	183	139	130	151
■ PTE	16	14	32	16	22	18	36	26	30	27
■ WALK-INS	131	119	129	128	95	84	158	127	128	159

■ CUSTOMER CHECK-IN
 ■ VSC OUTCOMES
 ■ REFERRED TO TRAINING
 ■ PTE
 ■ WALK-INS

YTD	
VIRTUAL-82%	
IN PERSON-18%	
JAN	
VIRTUAL-79%	
IN PERSON-21%	
FEB	
VIRTUAL-81%	
IN PERSON-19%	
MAR	
VIRTUAL-80%	
IN PERSON-20%	
APR	
VIRTUAL-78%	
IN PERSON-22%	

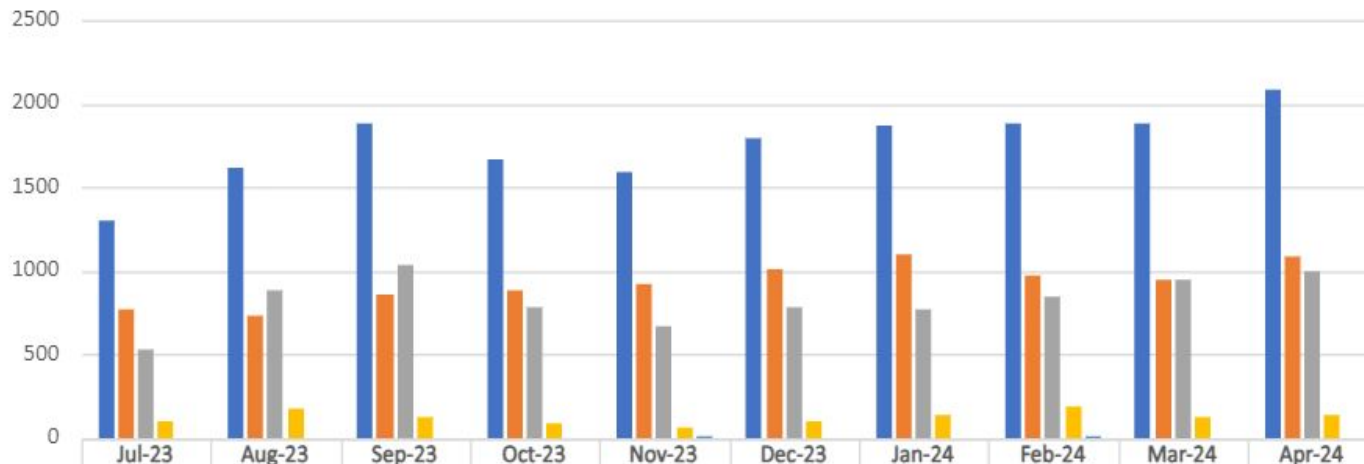
KQC-NIDOL

Total ES Customer Check-ins=6855 Average Per Month=686

FY 2024 CAMDEN DOL EMPLOYMENT SERVICES											TOT-YTD	AVG
	JUL	AUG	SEPT	OCT	NOV	DEC	JAN	FEB	MAR	APR		
CUSTOMER CHECK-IN	677	817	676	723	590	530	756	675	675	736	6855	685.5
VSC OUTCOMES	141	201	166	194	146	146	213	157	131	182	1677	167.7
REFERRED TO TRAINING	142	155	141	140	134	105	183	139	130	151	1420	142.0
PTE	16	14	32	16	22	18	36	26	30	27	237	23.7
WALK-INS	131	119	129	128	95	84	158	127	128	159	1258	125.8

APRIL 2024 UI SHOW RATE=52% YTD UI SHOW RATE 53%

FY 2024 UI IN-PERSON APPOINTMENTS



	Jul-23	Aug-23	Sep-23	Oct-23	Nov-23	Dec-23	Jan-24	Feb-24	Mar-24	Apr-24
■ SCHEDULED	1298	1614	1888	1665	1598	1798	1873	1885	1889	2090
■ ATTENDED	770	737	859	885	925	1014	1099	968	943	1092
■ NO SHOWS	528	877	1029	780	673	784	774	849	946	998
■ APPT-NOT ON LIST	102	173	117	88	64	103	132	189	127	131
■ WALK-INS	0	0	0	0	10	0	0	3	0	0

■ SCHEDULED ■ ATTENDED ■ NO SHOWS ■ APPT-NOT ON LIST ■ WALK-INS

KQC-NJDOL

YTD	SHOW RATE-53%	DNR-47%
JAN	SHOW RATE-59%	DNR-41%
FEB	SHOW RATE-51%	DNR-49%
MAR	SHOW RATE-50%	DNR-50%
APR	SHOW RATE-52%	DNR-48%

Total UI Onsite Customer Check-ins=9292 Average Per Month=929

FY 2024 CAMDEN UI IN-PERSON APPOINTMENTS											TOT	AVG
	Jul-23	Aug-23	Sep-23	Oct-23	Nov-23	Dec-23	Jan-24	Feb-24	Mar-24	Apr-24		
SCHEDULED	1298	1614	1888	1665	1598	1798	1873	1885	1889	2090	17598	1759.8
ATTENDED	770	737	859	885	925	1014	1099	968	943	1092	9292	929.2
NO SHOWS	528	877	1029	780	673	784	774	849	946	998	8238	823.8
APPT-NOT ON LIST	102	173	117	88	64	103	132	189	127	131	1226	122.6
WALK-INS	0	0	0	0	10	0	0	3	0	0	13	1.3